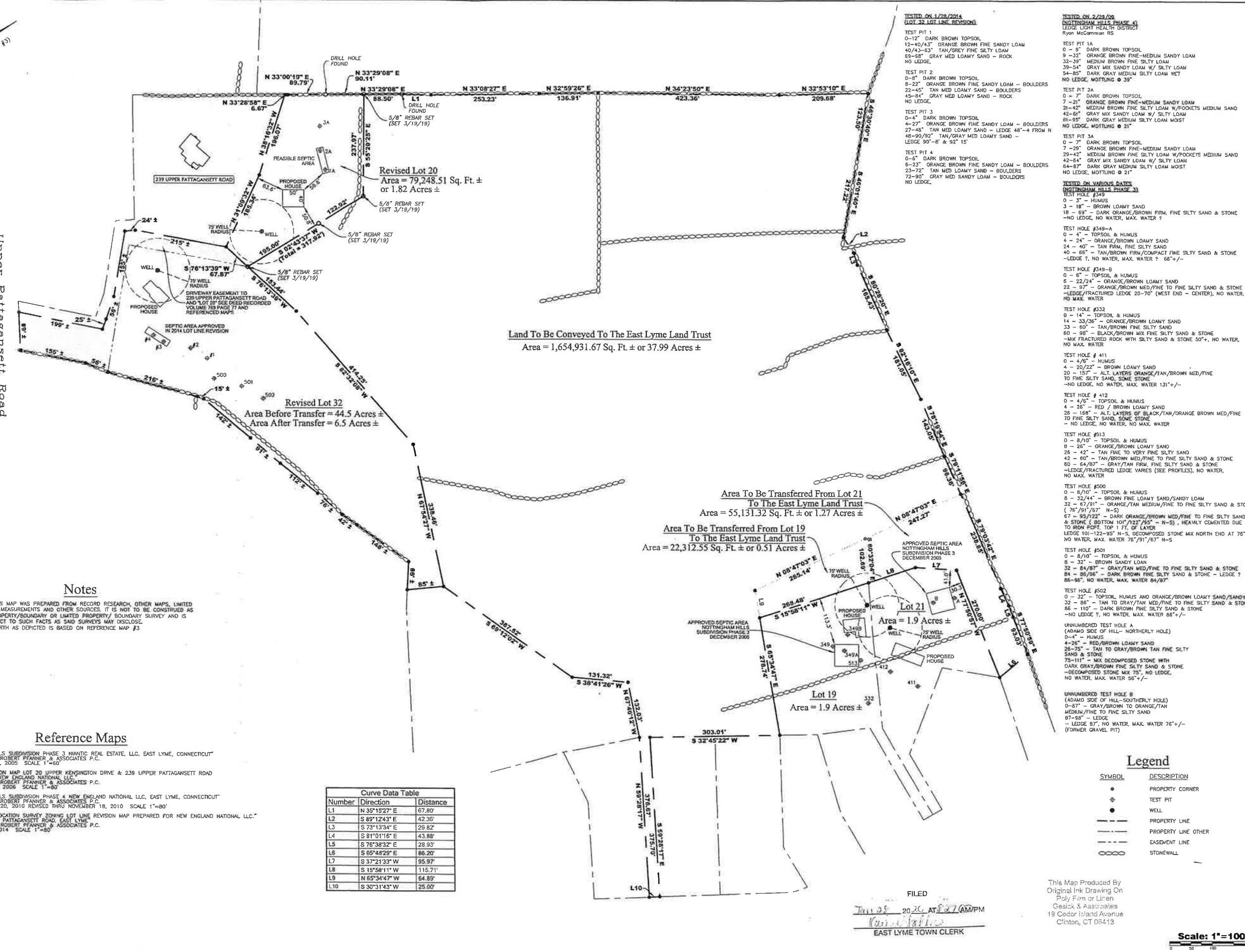


Upper Pattagansett Road



Notes

A. THIS MAP WAS PREPARED FROM RECORD RESEARCH, OTHER MAPS, LIMITED FIELD MEASUREMENTS AND OTHER SOURCES. IT IS NOT TO BE CONSTRUED AS A PROPERTY/BOUNDARY OR LIMITED PROPERTY/BOUNDARY SURVEY AND IS SUBJECT TO SUCH FACTS AS SAID SURVEYS MAY DISCLOSE.

B. NORTH AS DEPICTED IS BASED ON REFERENCE MAP #3.

Reference Maps

1. "NOTTINGHAM HILLS SUBDIVISION PHASE 3 NANTIC REAL ESTATE, LLC, EAST LYME, CONNECTICUT" PREPARED BY J. ROBERT PFANNER & ASSOCIATES P.C. DATED AUGUST 1, 2006 SCALE 1"=60'
2. "LOT LINE REVISION MAP LOT 20 UPPER KENSINGTON DRIVE & 239 UPPER PATTAGANSETT ROAD PREPARED FOR NEW ENGLAND NATIONAL LLC. PREPARED BY J. ROBERT PFANNER & ASSOCIATES P.C. DATED APRIL 28, 2006 SCALE 1"=60'
3. "NOTTINGHAM HILLS SUBDIVISION PHASE 4 NEW ENGLAND NATIONAL LLC, EAST LYME, CONNECTICUT" PREPARED BY J. ROBERT PFANNER & ASSOCIATES P.C. DATED OCTOBER 20, 2010 REVISED THRU NOVEMBER 18, 2010 SCALE 1"=80'
4. "IMPROVEMENT LOCATION SURVEY ZONING LOT LINE REVISION MAP PREPARED FOR NEW ENGLAND NATIONAL LLC." LOCATION UPPER PATTAGANSETT ROAD, EAST LYME, CONNECTICUT. PREPARED BY J. ROBERT PFANNER & ASSOCIATES P.C. DATED MAY 5, 2014 SCALE 1"=80'

Number	Direction	Distance
L1	N 35°15'27" E	67.80'
L2	S 89°12'43" E	42.36'
L3	S 73°13'34" E	29.82'
L4	S 81°01'16" E	43.88'
L5	S 76°38'32" E	28.93'
L6	S 05°48'29" E	86.20'
L7	S 37°21'33" W	95.97'
L8	S 15°58'11" W	115.71'
L9	N 65°34'47" W	64.89'
L10	S 30°31'43" W	25.00'

- TESTED ON 1/28/2014 (LOT 32 LOT LINE REVISION)**
- TEST PIT 1
0-12" DARK BROWN TOPSOIL
12-40/43" ORANGE BROWN FINE SANDY LOAM
40/43-63" TAN/GREY FINE SILTY LOAM
63-68" GRAY MED LOAMY SAND - ROCK
NO LEDGE.
- TEST PIT 2
0-8" DARK BROWN TOPSOIL
8-22" ORANGE BROWN FINE SANDY LOAM - BOULDERS
22-45" TAN MED LOAMY SAND - BOULDERS
45-84" GRAY MED LOAMY SAND - ROCK
NO LEDGE.
- TEST PIT 3
0-4" DARK BROWN TOPSOIL
4-27" ORANGE BROWN FINE SANDY LOAM - BOULDERS
27-48" TAN MED LOAMY SAND - LEDGE 48"-4 FROM N
48-90/92" TAN/GRAY MED LOAMY SAND - LEDGE 90"-8" & 92" 15'
- TEST PIT 4
0-5" DARK BROWN TOPSOIL
5-23" ORANGE BROWN FINE SANDY LOAM - BOULDERS
23-72" TAN MED LOAMY SAND - BOULDERS
72-90" GRAY MED SANDY LOAM - BOULDERS
NO LEDGE.
- TESTED ON 2/28/09 (NOTTINGHAM HILLS PHASE 4)**
LEOGE LIGHT HEALTH DISTRICT
Ryan McCammon RS
- TEST PIT 1A
0-9" DARK BROWN TOPSOIL
9-32" ORANGE BROWN FINE-MEDIUM SANDY LOAM
32-39" MEDIUM BROWN FINE SILTY LOAM
39-54" GRAY MIX SANDY LOAM W/ SILTY LOAM
54-85" DARK GRAY MEDIUM SILTY LOAM WET
NO LEDGE, MOTTLING @ 39"
- TEST PIT 2A
0-7" DARK BROWN TOPSOIL
7-21" ORANGE BROWN FINE-MEDIUM SANDY LOAM
21-42" MEDIUM BROWN FINE SILTY LOAM W/POCKETS MEDIUM SAND
42-61" GRAY MIX SANDY LOAM W/ SILTY LOAM
61-85" DARK GRAY MEDIUM SILTY LOAM MOST
NO LEDGE, MOTTLING @ 21"
- TEST PIT 3A
0-7" DARK BROWN TOPSOIL
7-29" ORANGE BROWN FINE-MEDIUM SANDY LOAM
29-42" MEDIUM BROWN FINE SILTY LOAM W/POCKETS MEDIUM SAND
42-84" GRAY MIX SANDY LOAM W/ SILTY LOAM
84-87" DARK GRAY MEDIUM SILTY LOAM MOST
NO LEDGE, MOTTLING @ 21"
- TESTED ON VARIOUS DATES (NOTTINGHAM HILLS PHASE 3)**
- TEST HOLE #349
0-3" - HUMUS
3-18" - BROWN LOAMY SAND
18-69" - DARK ORANGE/BROWN FIRM, FINE SILTY SAND & STONE
NO LEDGE, NO WATER, MAX. WATER ?
- TEST HOLE #349-A
0-4" - TOPSOIL & HUMUS
4-24" - ORANGE/BROWN LOAMY SAND
24-40" - TAN FIRM, FINE SILTY SAND
40-68" - TAN/BROWN FIRM/COMPACT FINE SILTY SAND & STONE
-LEDGE ? NO WATER, MAX. WATER ? 66"/-/-
- TEST HOLE #349-B
0-6" - TOPSOIL & HUMUS
6-22/24" - ORANGE/BROWN LOAMY SAND
22-97" - ORANGE/BROWN MED/FINE TO FINE SILTY SAND & STONE
-LEDGE/FRACTURED LEDGE 20-70" (WEST END - CENTER), NO WATER, NO MAX. WATER
- TEST HOLE #332
0-14" - TOPSOIL & HUMUS
14-33/36" - ORANGE/BROWN LOAMY SAND
33-60" - TAN/BROWN FINE SILTY SAND
60-88" - BLACK/BROWN MIX FINE SILTY SAND & STONE
-MIX FRACTURED ROCK WITH SILTY SAND & STONE 50"+, NO WATER, NO MAX. WATER
- TEST HOLE #411
0-4/8" - HUMUS
4-20/22" - BROWN LOAMY SAND
20-157" - ALT. LAYERS ORANGE/TAN/BROWN MED/FINE TO FINE SILTY SAND, SOME STONE
-NO LEDGE, NO WATER, MAX. WATER 131"/-/-
- TEST HOLE #412
0-4/8" - TOPSOIL & HUMUS
4-26" - RED / BROWN LOAMY SAND
26-168" - ALT. LAYERS OF BLACK/TAN/ORANGE BROWN MED/FINE TO FINE SILTY SAND, SOME STONE
-NO LEDGE, NO WATER, NO MAX. WATER
- TEST HOLE #513
0-8/10" - TOPSOIL & HUMUS
8-26" - ORANGE/BROWN LOAMY SAND
26-42" - TAN FINE TO VERY FINE SILTY SAND
42-60" - TAN/BROWN MED/FINE TO FINE SILTY SAND & STONE
60-64/87" - GRAY/TAN FIRM, FINE SILTY SAND & STONE
-LEDGE/FRACTURED LEDGE VARIES (SEE PROFILES), NO WATER, NO MAX. WATER
- TEST HOLE #500
0-5/10" - TOPSOIL & HUMUS
5-32/44" - BROWN FINE LOAMY SAND/SANDY LOAM
32-67/91" - ORANGE/TAN MEDIUM/FINE TO FINE SILTY SAND & STONE (76'/91'/57" - N-5)
67-95/122" - DARK ORANGE/BROWN MED/FINE TO FINE SILTY SAND & STONE (BOTTOM 101'/122'/95" - N-5). HEAVILY CEMENTED DUE TO IRON PORE, TOP 1 FT. OF LAYER
LEDGE 101-122-95" N-5, DECOMPOSED STONE MIX NORTH END AT 76", NO WATER, MAX. WATER 76'/91'/67" - N-5
- TEST HOLE #501
0-8/10" - TOPSOIL & HUMUS
8-32" - BROWN SANDY LOAM
32-84/87" - GRAY/TAN MED/FINE TO FINE SILTY SAND & STONE
84-85/94" - DARK BROWN FINE SILTY SAND & STONE - LEDGE ?
85-95" - NO WATER, MAX. WATER 84/87"
- TEST HOLE #502
0-32" - TOPSOIL, HUMUS AND ORANGE/BROWN LOAMY SAND/SANDY LOAM
32-86" - TAN TO GRAY/TAN MED/FINE TO FINE SILTY SAND & STONE
86-110" - DARK BROWN FINE SILTY SAND & STONE
-NO LEDGE ? NO WATER, MAX. WATER 66"/-/-
- UNNUMBERED TEST HOLE A (ADAM'S SIDE OF HILL - NORTHERLY HOLE)
0-4" - HUMUS
4-28" - RED/BROWN LOAMY SAND
28-75" - TAN TO GRAY/BROWN TAN FINE SILTY SAND & STONE
75-111" - MIX DECOMPOSED STONE WITH DARK GRAY/BROWN FINE SILTY SAND & STONE
-DECOMPOSED STONE MIX 75", NO LEDGE, NO WATER, MAX. WATER 56"/-/-
- UNNUMBERED TEST HOLE B (ADAM'S SIDE OF HILL - SOUTHERLY HOLE)
0-57" - GRAY/BROWN TO ORANGE/TAN MEDIUM/FINE TO FINE SILTY SAND
57-98" - LEDGE
-LEDGE 87", NO WATER, MAX. WATER 75"/-/- (FORMER GRAVEL PIT)

Land To Be Conveyed To The East Lyme Land Trust
Area = 1,654,931.67 Sq. Ft. ± or 37.99 Acres ±

Area To Be Transferred From Lot 21 To The East Lyme Land Trust
Area = 55,131.32 Sq. Ft. ± or 1.27 Acres ±

Area To Be Transferred From Lot 19 To The East Lyme Land Trust
Area = 22,312.55 Sq. Ft. ± or 0.51 Acres ±

Lot 21
Area = 1.9 Acres ±

Lot 19
Area = 1.9 Acres ±

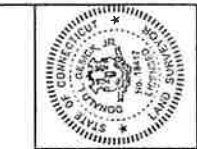
Legend

SYMBOL	DESCRIPTION
●	PROPERTY CORNER
○	TEST PIT
⊙	WELL
---	PROPERTY LINE
---	PROPERTY LINE OTHER
---	EASEMENT LINE
⊘	STONEWALL

This Map Produced By
Original Ink Drawing On
Poly Film or Litho
Gesick & Associates
19 Cedar Island Avenue
Clinton, CT 06413

FILED
MAY 28 2014 AT 8:27 AM/PM
Kasim Williams
EAST LYME TOWN CLERK

Scale: 1"=100'
0 50 100 200



J. ROBERT PFANNER
REGISTERED PROFESSIONAL SURVEYOR
No. 10111
STATE OF CONNECTICUT

GESICK & ASSOCIATES, P.C.
SURVEYORS & MAPPERS / PLANNERS
19 CEDAR ISLAND AVE.
CLINTON, CONNECTICUT 06413
OFFICE: 860-669-7799 FAX: 860-669-5633
www.gesicksurveyors.com

Lot Line Revisions
NOTTINGHAM HILLS SUBDIVISION LOTS 19, 20, 21 & 32
Property Owner: English Harbour Asset
Management LLC
c/o Kristen Clarke P.E.
375 N. Bend Drive
Manchester, NH

Revisions
3/1/13 - Revised Per Town Comments
6/20/13 - Revised Per Comments
11/9/13 - Revised Per Comments

Date: February 4, 2014
Drawing: 16-144
Drawn: P.H.
Sheet: 1 OF 1