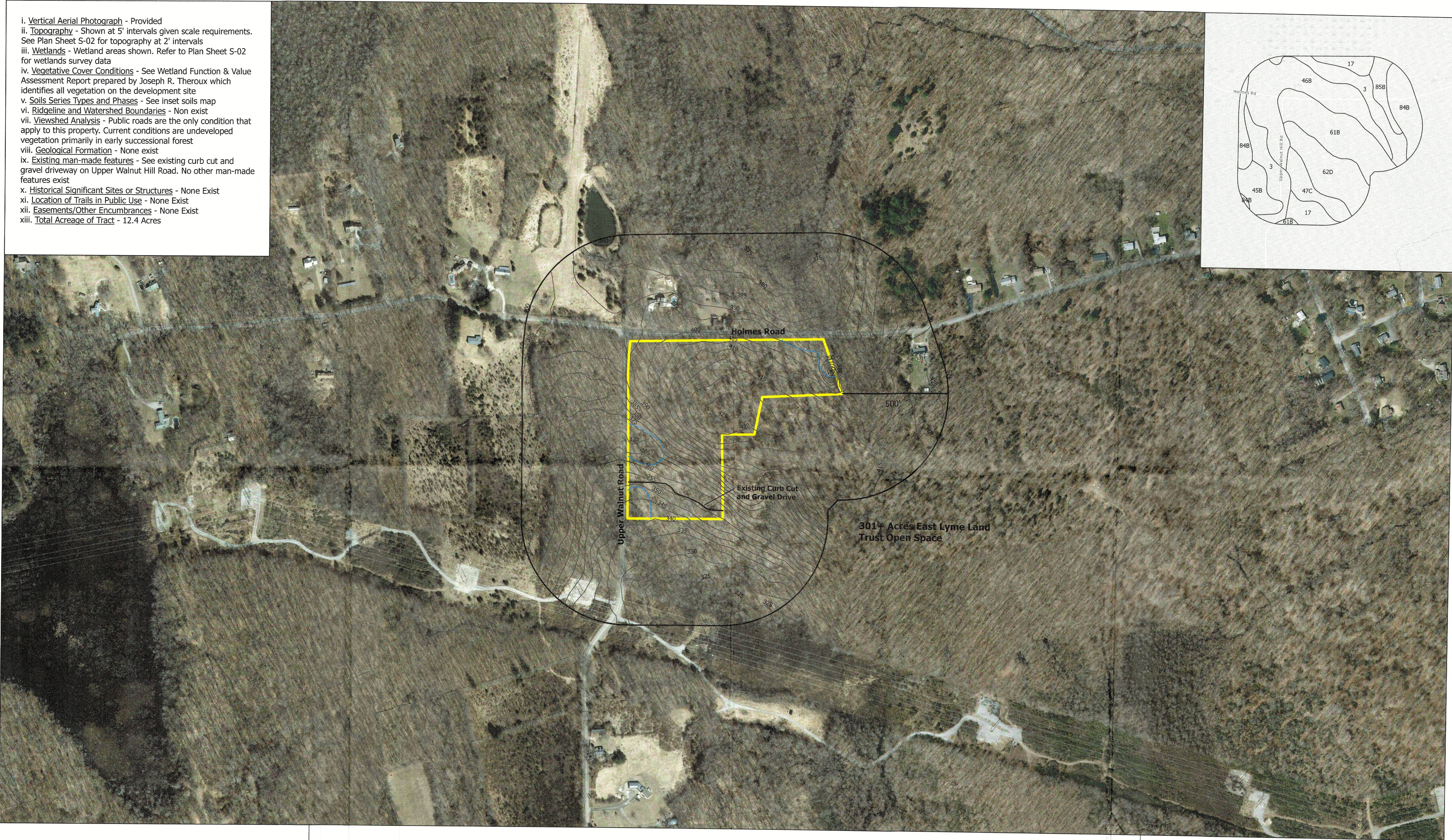
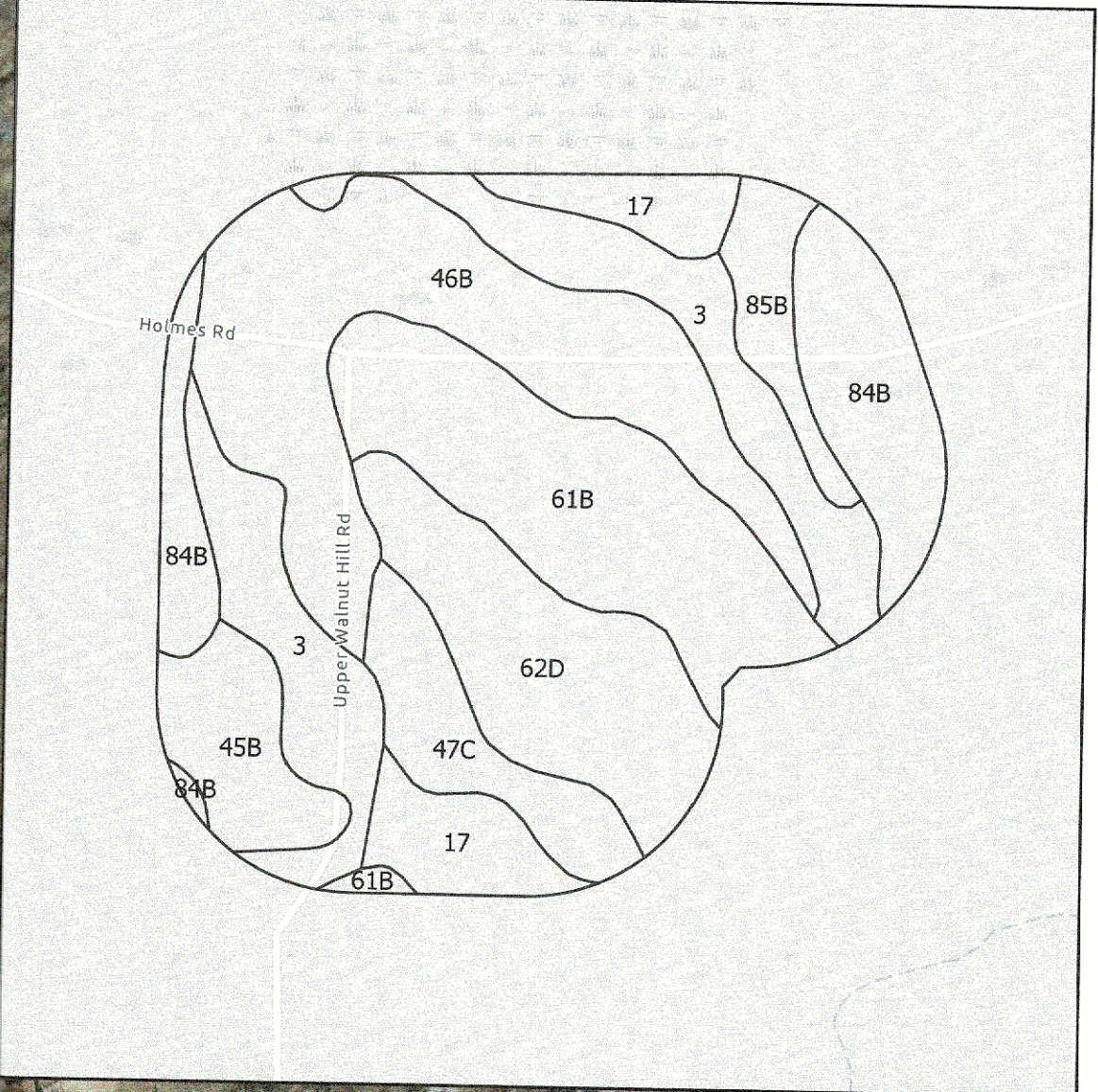


- i. Vertical Aerial Photograph - Provided
- ii. Topography - Shown at 5' intervals given scale requirements. See Plan Sheet S-02 for topography at 2' intervals
- iii. Wetlands - Wetland areas shown. Refer to Plan Sheet S-02 for wetlands survey data
- iv. Vegetative Cover Conditions - See Wetland Function & Value Assessment Report prepared by Joseph R. Theroux which identifies all vegetation on the development site
- v. Soils Series Types and Phases - See inset soils map
- vi. Ridgeline and Watershed Boundaries - Non exist
- vii. Viewshed Analysis - Public roads are the only condition that apply to this property. Current conditions are undeveloped vegetation primarily in early successional forest
- viii. Geological Formation - None exist
- ix. Existing man-made features - See existing curb cut and gravel driveway on Upper Walnut Hill Road. No other man-made features exist
- x. Historical Significant Sites or Structures - None Exist
- xi. Location of Trails in Public Use - None Exist
- xii. Easements/Other Encumbrances - None Exist
- xiii. Total Acreage of Tract - 12.4 Acres



Property Owner:  
Port Side Holdings Inc.  
English Harbour Capital Partners LLC  
as Tenants in Common

Natural and Cultural Resources and Site Analysis Map  
Holmes & Upper Walnut Hill Road - 5 Lot Subdivision  
Scale = 1"=200"  
Site 12.40 Acres

- Legend
- Subject Parcel
  - 500' Buffer
  - 5' Elevation Contours
  - Inland Wetlands

JUN - 7 2023