

**EAST LYME HARBOR MANAGEMENT & SHELLFISH COMMISSION  
PUBLIC HEARING MINUTES  
AUGUST 15, 2022  
EAST LYME TOWN HALL**

Chairman  
Stephen Dinsmore

Treasurer  
Donald F. Landers Jr.

Secretary  
Craig Mason

**Members Present:** Steve Dinsmore, Don MacKenzie, Jim Allen, Rick Kanter,

**Members Absent:** Don Landers, Greg Murin, Craig Mason,

**Ex-Officio(s) Present:**

**Ex-Officio(s) Absent:** Ann Cicchiello, BOS liaison

**Also Present:** Mark Berger, Deputy Harbor Master

**1. CALL TO ORDER:** S. Dinsmore called the meeting to order at 7:00 PM

**2. PUBLIC HEARING on WILLIAM HURTLE'S LEASE PROPOSAL**

Chairman Dinsmore verified the legal notices were properly posted in the Day paper. He explained the process of the Public Hearing.

Bill Hurtle, 41 Sterling Hill Road, Lyme, applicant stated that he is proposing leasing 5 acres in Niantic Bay for the purpose of raising approximately 100,000 oysters a year. Cages will be on the bottom. The first year will be slow and gradually increase over time.

There will be six buoys approved by DEEP and will define the perimeter of the working area. Members asked about a surety bond in the event there was a storm event and equipment were disturbed and remediation of impact was needed. The issue of a bond will be addressed in the lease agreement.

He was questioned about the outstanding issue of the depth of water at mean low water on one of the corners of the perimeter. B. Hurtle stated that he and a relative went out and did the measurement and the depth at mean low water is 8' 11". He informed the Commission that there would be approximately 7' of water above the cages. He also stated that he would most likely not be putting cages so close to that corner.

**Public Comment**

Robert Lineberger, 29 Niantic River Road, Waterford, wanted to know if all processing will be on the vessel? B. Hurtle said he is not entirely sure, but he has a small tumbler that will fit on the boat, he said the processing will not be coming back to shore.

**MOTION: (Allen/Kanter) to close the public hearing. Vote: APPROVED unanimously. 7:13**

Respectfully Submitted  
Sue Spang  
Recording Secretary

FILED

August 17, 2022 AT 12:43 AM (PM)  
Brooke Florence ATC  
EAST LYME TOWN CLERK

**Town of East Lyme Aquaculture Application**

**TOWN OF EAST LYME**

East Lyme Harbor Management/Shellfish Commission

Application for Aquaculture

Applicant Name: William Hurtle

Business Name: \_\_\_\_\_

Mailing Address: 41 Sterling Hill Road

Town: Lyme State: CT Zip Code: 06371

Home Phone: 860-434-6239 Business Phone: \_\_\_\_\_ Cell: 631-375-1589

Purpose: Commercial:  Research: \_\_\_\_\_ Other: \_\_\_\_\_

Species to be cultivated: Eastern Oyster (*Crassostrea spp.*), Bay Scallop (*Argopecten irradians*), Hard Clam (*Mercenaria mercenaria*)

Source of Seed Stock (Must be DA/BA approved): To be determined. From a Connecticut Department of Agriculture, Bureau of Aquaculture approved source.

Length of Lease Requested: 5 Years (Not to exceed 5 years)

Location of Project – Attach map (List GPS coordinates in order for irregular plots):

Position 1: 41.323068°N, 72.18861°W

Position 2: 41.323084°N, 72.186911°W

Position 3: 41.321787°N, 72.188589°W

Position 4: 41.321803°N, 72.18689°W

Add additional reference points and description on back (Check here) \_\_\_\_\_

Total number of tract acres: 5

FILED

May 18, 20 22 AT 12:28 AM/PM  
Brooke Stevens  
EAST LYME TOWN CLERK

Water Classification: Approved  Conditional  Restricted Relay   
Prohibited

Type of Aquaculture: Category I:  (On bottom only) Category II:

If Category II is checked, specify all types that apply: Raft  Suspended   
Net Pens  Long Lines  Cages  Bags  Hatchery   
Upweller  Predator Nets  Other

I certify that the above application and all submitted documentation are correct to the best of my knowledge. The applicant must receive approval from DA/BA for all operations and must conform to all requirements as specified in the Aquaculture section of the ELHMSFC management plan.

---

Date Applicant Signature

Town Clerk Approval: According to the records of the Town of East Lyme, the grounds described above have not been previously designated

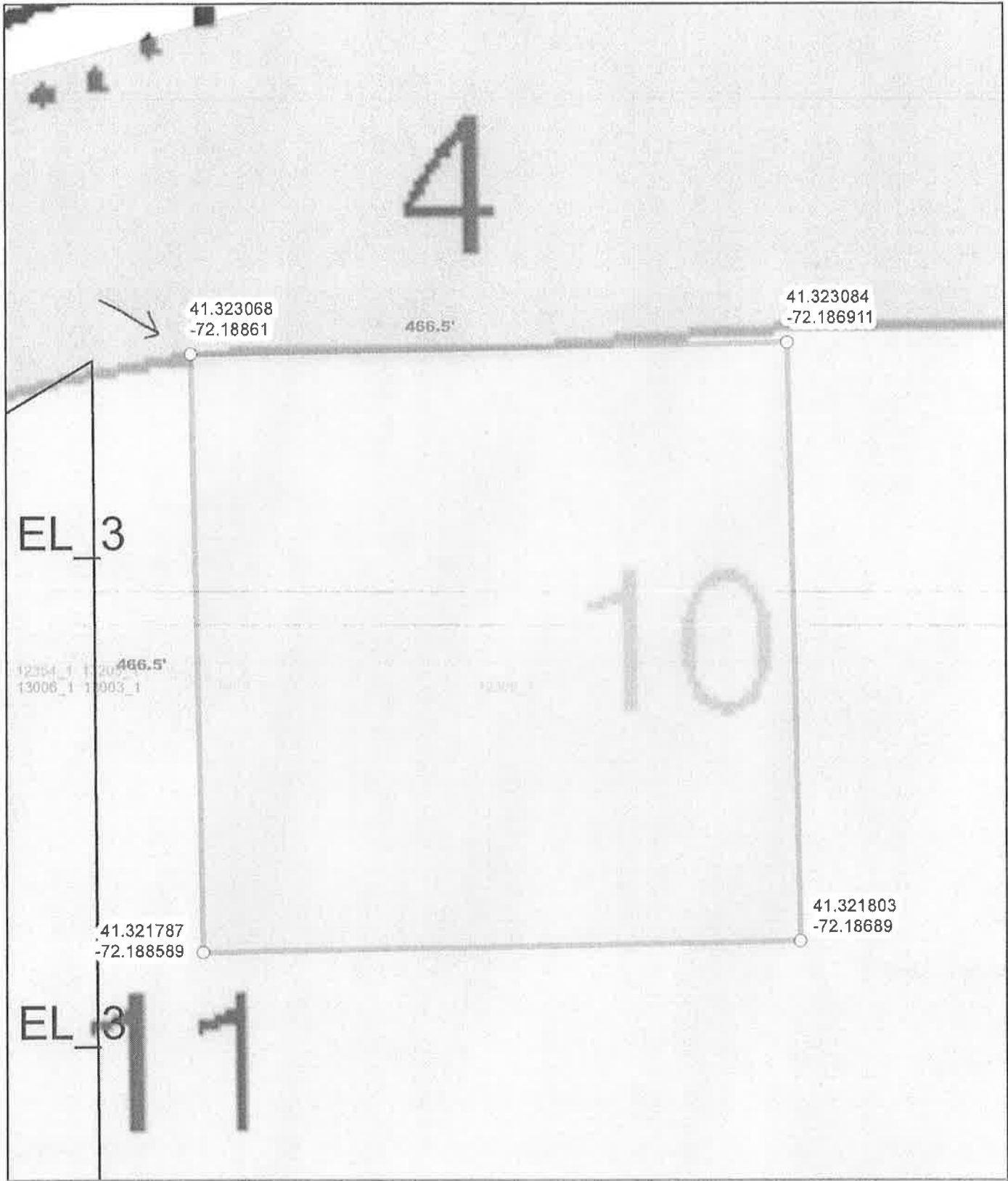
May 4, 2022 - Karen Miller Galbo  
Date Town Clerk Karen Miller Galbo  
East Lyme Town Clerk

Commission approval:

---

Date Chairman

5.2 East Lyme Sample Aquaculture Lease WHEREAS, THE EAST LYME SHELLFISH COMMISSION, on \_\_\_\_\_, at the request of \_\_\_\_\_, doing business as \_\_\_\_\_



Bill Hurtle  
 East Lyme, CT  
 (5) acre lot

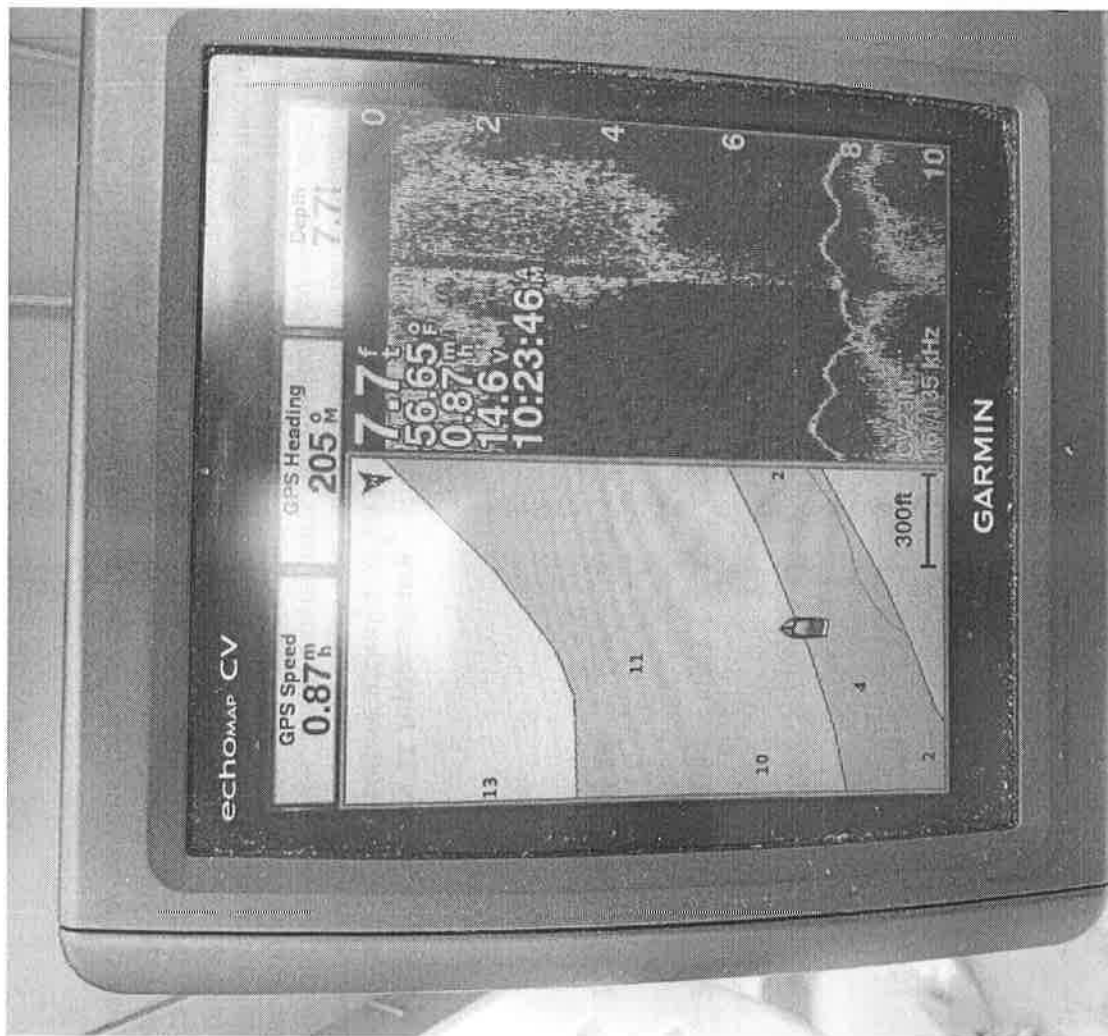
Coordinate System: NAD 1983 StatePlane Connecticut FIPS 6600 Feet  
 Projection: Lambert Conformal Conic  
 Datum: North American 1953  
 False Easting: 1 000 000.0000  
 False Northing: 500 000.0000  
 Central Meridian: -72.7500  
 Standard Parallel 1: 41.2000  
 Standard Parallel 2: 41.8667  
 Latitude Of Origin: 40.8333  
 Units: Foot US



Legend

	Shellfish_Class_Poly
	Approved
	Conditionally Approved Seasonal
	Conditionally Approved
	Shellfish
	Conditionally Approved
	Pond/egg

Date: 1/11/2022



GARMIN  
MADE IN THE U.S.A.  
10871

< Apr 2022

Tidal Data Source: Niantic, CT (#8461925)

Jun 2022 >

Date		High Tide				Low Tide				Sun		Moon
		AM	ft	PM	ft	AM	ft	PM	ft	Rise	Set	
19	Thu	1:00	3.5	1:40	2.6	8:01	-0.1	8:06	0.3	5:24	8:05	
20	Fri	2:02	3.3	2:42	2.6	9:00	0.0	9:11	0.3	5:23	8:06	
21	Sat	3:04	3.1	3:45	2.6	9:59	0.1	10:18	0.4	5:22	8:07	
22	Sun	4:08	2.9	4:50	2.6	10:57	0.2	11:25	0.4	5:22	8:08	

#### 4.7.3.2 Category II Aquaculture

Category II Aquaculture includes all on bottom shellfish and other aquatic organisms rearing devices (including cages and bags), and all off bottom suspended systems (including long lines, lantern nets, rafts, and associated work floats) for the culture of shellfish or seaweed and other aquatic organisms. Also included under this category is the installation of intake and discharge structures for land-based hatchery with once through circulation system. Category II aquaculture areas have been designated in the Management Plan as areas that are suitable for this type of activity. (Structures must be submerged in water at least 8 feet below Mean Low Water (MLW). Other areas may be considered by the Commission on a case-by-case basis.

## **Long Island Sound and Tidally Influenced Waters**

**Minimum = 12 inch diameter**

**(Recommended = collar type with 14 to 16 inch diameter barrel.)**

Buoys must be cylindrical in shape with dimensions of not less than sixty one inches (61") in height with a minimum of thirty six inches (36") exposure above the surface of the water. If collared buoys are used, they must have dimensions of not less than nine inches (9") or twelve inches (12") in diameter and forty two inches (42") in height with a minimum of twenty four inches (24") exposure above the surface of the water.

Buoys must be made of Ionomer foam or equivalent, or Acrylonitrile-butadiene-styrene (ABS) or equivalent, filled with polyurethane foam or equivalent and must have sufficient ballast to maintain proper stability and exposure above the surface of the water. The buoys must be white with a minimum one inch (1") wide white or silver reflective band at the top together with a minimum three inch (3") wide international orange reflective band at the top directly under the white or silver reflective band and another near the bottom but above the waterline. In addition, the appropriate two inch (2") wide band international orange reflective regulatory symbol and the required wording in black, block lettering at least three inches (3") in height must be centered on two (2) sides of each buoy. The permit number, when issued, must be sized to fit and placed on the top flat portion of each buoy in indelible ink or black vinyl stick-on letters.

# SL-B1060 Spar Buoy

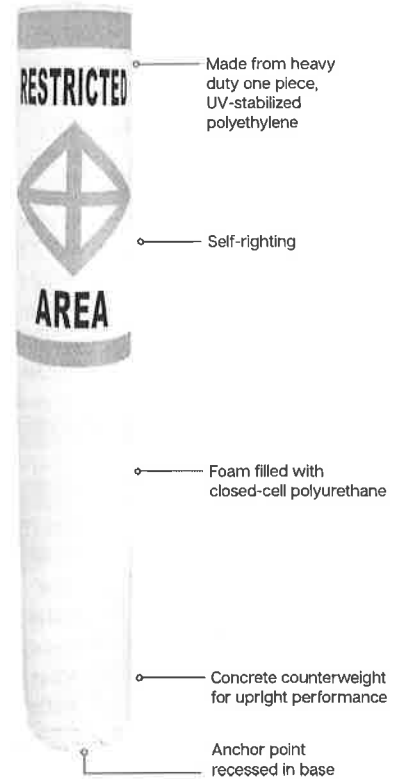
Regulatory and Channel/Navigation Markers

Sealite's SL-B1060 Buoy is rotationally-molded in one piece using UV-stabilized polyethylene making them almost indestructible. The buoy is completely foam filled for added strength and buoyancy.

An internal concrete counterweight gives the buoy a lower center of gravity, so the buoy is able to stand more upright on station.

The USCG approved optional, retroreflective bands provide unmatched night time visibility on the regulatory style. The SL-B1060 buoy can be fitted with an SL-15 or SL-60 solar marine lantern for added visibility at night or in foul weather.

Vinyl wraps and decal restoration kits are also available to repurpose existing regulatory style buoys (see back).



**Above:** SL-B1060 is available in green can and red nun styles for channel marking configurations (shown in region B colors). Nun shown with optional solar marine lantern and retroreflective tape.



**Above:** Integrated stainless steel mooring eye and recessed anchor point allow buoys to stand upright when stored



## Features

- Molded from strong, durable UV-stabilized polyethylene
- Recessed anchor point for upright and convenient storage
- Easy mounting of solar marine lanterns
- Regulatory signage available



## Cost Effective

- Withstand heavy UV exposure - no peeling or fading



## Flexible Configurations

- Channel markers - red or green
- Regulatory buoy - white with orange stripes



## Optional

- Mold-in graphics
- Mooring equipment & chains
- Vinyl decal restoration kits and wraps to refurbish or repurpose existing buoys



## Applications

- Navigation channels, harbor approaches and port entrances
- Regulatory marking of hazards, mooring fields, cautionary zones



## Certifications

- Meets U.S federal, state and local regulations



## Reliable

- Excellent buoyancy & stability

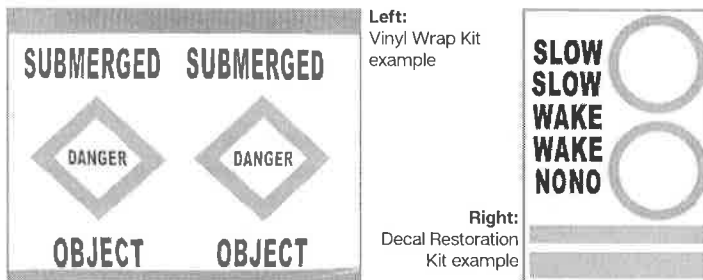


## Technical Specifications\*

SL-B1060 Buoy	
<b>General Characteristics</b>	
Available Colors	Red, Green, White, Yellow, Orange
Nominal Freeboard (in/mm)	36 (914)
Nominal Draft (in/mm)	25 (635)
Maximum Mooring Load (lb/kg)	12 (5)
Submergence (lb/in, kg/cm)	3 (0.5)
<b>Physical Characteristics</b>	
Material	Rotationally-molded UV-stabilized virgin polyethylene with 316-grade stainless steel mooring eye
Wall Thickness (in/mm)	0.2 (5)
Filling	Closed-cell polyurethane foam
Height (in/mm)	61 (1549)
Net Weight (lb/kg)	63 (29)
Product Life Expectancy	12+ years
<b>Certifications</b>	
Quality Assurance	ISO9001:2015
<b>Intellectual Property</b>	
Trademarks	SEALITE® is a registered trademark of Sealite Pty Ltd
Warranty	1 year
Lantern Options	Sealite SL-15 or SL-60*
Options Available	<ul style="list-style-type: none"> <li>• Custom signage</li> <li>• Vinyl wraps</li> <li>• Reflective band</li> </ul>

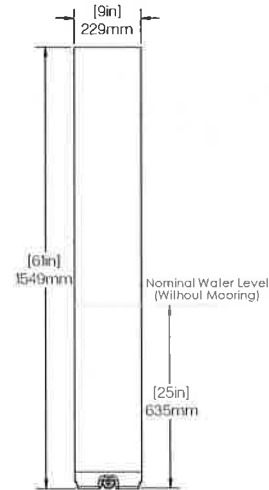
\*\*The SL-B1060 Nun buoy requires a mounting plate (SL-MC-10) for the SL-60 Lantern.

Regulatory Wraps & Restoration Kits		
	Vinyl Wrap Kit (Part No.: SL-BWRAP1060)	Decal Restoration Kit
Material	Two USCG approved retroreflective orange bands, regulatory black messages, and orange symbols on heavy-duty white vinyl material	Two each: retroreflective orange bands, regulatory black messages, and orange symbols
Options	Custom graphics or logo Silver retroreflective band	Custom graphics or logo Silver retroreflective band

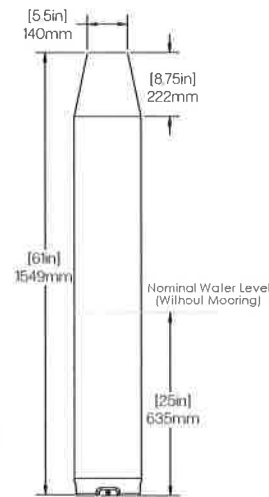


## Technical Illustration

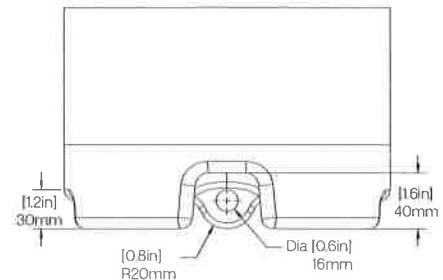
SL-B1060 Can Buoy Dimensions



SL-B1060 Nun Buoy Dimensions



SL-B1060 Bottom Eye Dimensions



CE † Subject to standard terms and conditions.  
\* Specifications subject to change or variation without notice.

We believe technology improves navigation™

SL-B1060\_DATA\_EN\_V1-0



Sealite USA LLC  
USA  
+1 (603) 737 1311

Sealite Asia Pte Ltd  
Singapore  
+65 6829 2243

Sealite United Kingdom Ltd  
UK  
+44 (0) 1502 588026

Sealite Pty Ltd  
Australia  
+61 (0)3 5977 6128



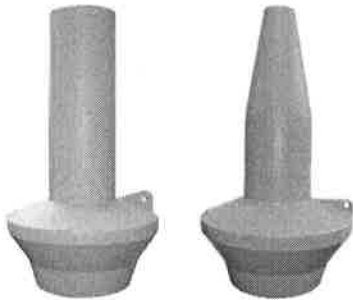
# SL-B700 Float Collar Buoy

Regulatory and Channel/Navigation Markers

The SL-B700 Buoy is rotationally-molded in one piece from strong, durable UV-stabilized polyethylene and is filled with closed-cell polyurethane. It is available in three different configurations: a red nun and green can navigation buoys, as well as a regulatory style buoy, which meet federal, state, and local requirements. A large mooring attachment point accommodates a 5/8 inch (16mm) shackle or 1/2 inch (12mm) cable.

Sealite's SL-B700 Buoy incorporates stainless steel interconnected mooring and lifting eye (see below) for additional strength while being deployed and retrieved. The top section has three threaded M6 inserts, molded into the buoy to allow easy mounting of the SL-60 Large Base or SL-70 2-3NM Marine Lanterns.

Regulatory signage and custom graphics are available, which will hold up under heavy UV exposure without peeling and fading. Vinyl wraps and decal restoration kits are also available to repurpose older buoys (see back).



**Above:** SL-B700 is available in green can and red nun style for channel marking configurations (shown in region B colors)



**Above:** Structural integrity of SL-B700 is reinforced through the use of an interconnected stainless steel mooring and lifting eye



## Features

- Molded from strong, durable UV-stabilized polyethylene
- Interconnected mooring and lifting eye for additional strength
- Easy mounting of solar marine lanterns
- Regulatory signage available

## Cost Effective

- Low maintenance costs
- Withstand heavy UV exposure - no peeling or fading

## Flexible Configurations

- Channel Markers - Green Can or Red Nun
- Regulatory Buoy - White with Orange Stripes

## Optional

- Mold-in graphics
- Mooring equipment & chains
- Vinyl decal restoration kits and wraps to refurbish or repurpose existing buoys

## Applications

- Navigation channels, harbor approaches and port entrances
- Regulatory marking of hazards, mooring fields, cautionary zones

## Certifications

- Meets U.S. federal, state and local regulations

## Reliable

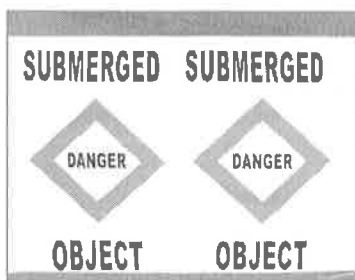
- Excellent buoyancy & stability

## Technical Specifications\*

SL-B700 Buoy	
<b>General Characteristics</b>	
Available Colors	Red, Green, White, Yellow, Orange
Nominal Freeboard (in/mm)	43.5 (1105)
Nominal Draft (in/mm)	10.5 (267)
Maximum Mooring Load (lb/kg)	132 (60)
Submergence (lb/in, kg/cm)	21.6 (3.8)
<b>Physical Characteristics</b>	
Material	Rotationally-molded UV-stabilized virgin polyethylene
Wall Thickness (in/mm)	0.25 (7)
Filling	Closed-cell polyurethane foam
Height (in/mm)	54 (1372)
Collar Diameter (in/mm)	28 (700)
Diameter (in/mm)	12 (305)
Net Weight (lb/kg)	95 (43)
Product Life Expectancy	12+ years
<b>Certifications</b>	
Quality Assurance	ISO9001:2015
<b>Intellectual Property</b>	
Trademarks	SEALITE® is a registered trademark of Sealite Pty Ltd
Warranty	1 year
Lantern Options	Sealite SL-15, SL-60 Large Base or SL-70 lantern**
Options Available	<ul style="list-style-type: none"> <li>Mold-in graphics</li> <li>Vinyl wraps</li> <li>Reflective band</li> <li>Side attachment</li> </ul>

\*\*Three threaded inserts allow direct mounting of the SL-60 Large Base and SL-70 Marine Lanterns onto the SL-B700 Can. The SL-B700 Nun buoy requires a mounting plate (MC-11) for the SL-60 and SL-70. The SL-15 requires self-tapping screws.

Regulatory Wraps & Restoration Kits		
	Vinyl Wrap Kit (Part No.: SL-BWRAP700)	Decal Restoration Kit
Material	Two USCG approved retroreflective orange bands, regulatory black messages, and orange symbols on heavy-duty white vinyl material	Two each: retroreflective orange bands, regulatory black messages, and orange symbols
Options	Custom graphics or logo Silver retroreflective band	Custom graphics or logo Silver retroreflective band



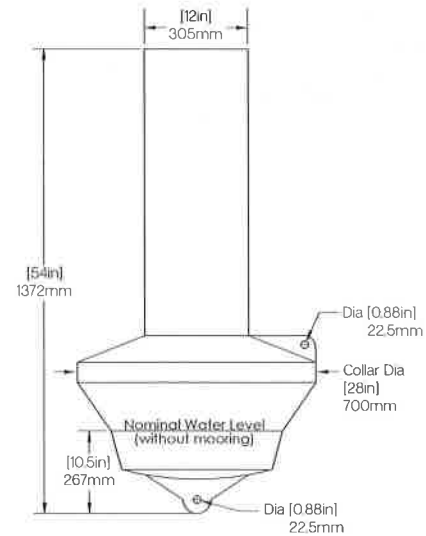
Left:  
Vinyl Wrap Kit  
example



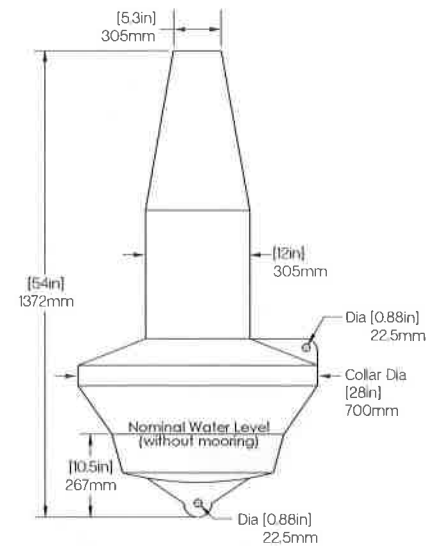
Right:  
Decal Restoration  
Kit example

## Technical Illustration

### SL-B700 Can and Regulatory Buoy Dimensions



### SL-B700 Nun Buoy Dimensions



CE † Subject to standard terms and conditions.  
\* Specifications subject to change or variation without notice.  
We believe technology improves navigation™

SL-B700\_DATA\_EN\_V1-0



Sealite USA LLC  
USA  
+1 (603) 737 1311

Sealite Asia Pte Ltd  
Singapore  
+65 6329 2243

Sealite United Kingdom Ltd  
UK  
+44 (0) 1502 588026

Sealite Pty Ltd  
Australia  
+61 (0)3 5977 6128



