

Harvest Christian Fellowship

North Bride Brook Road

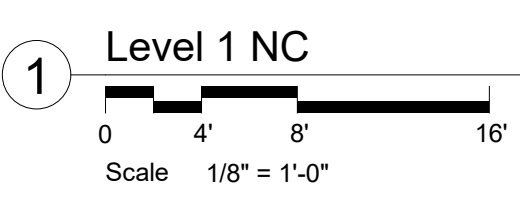
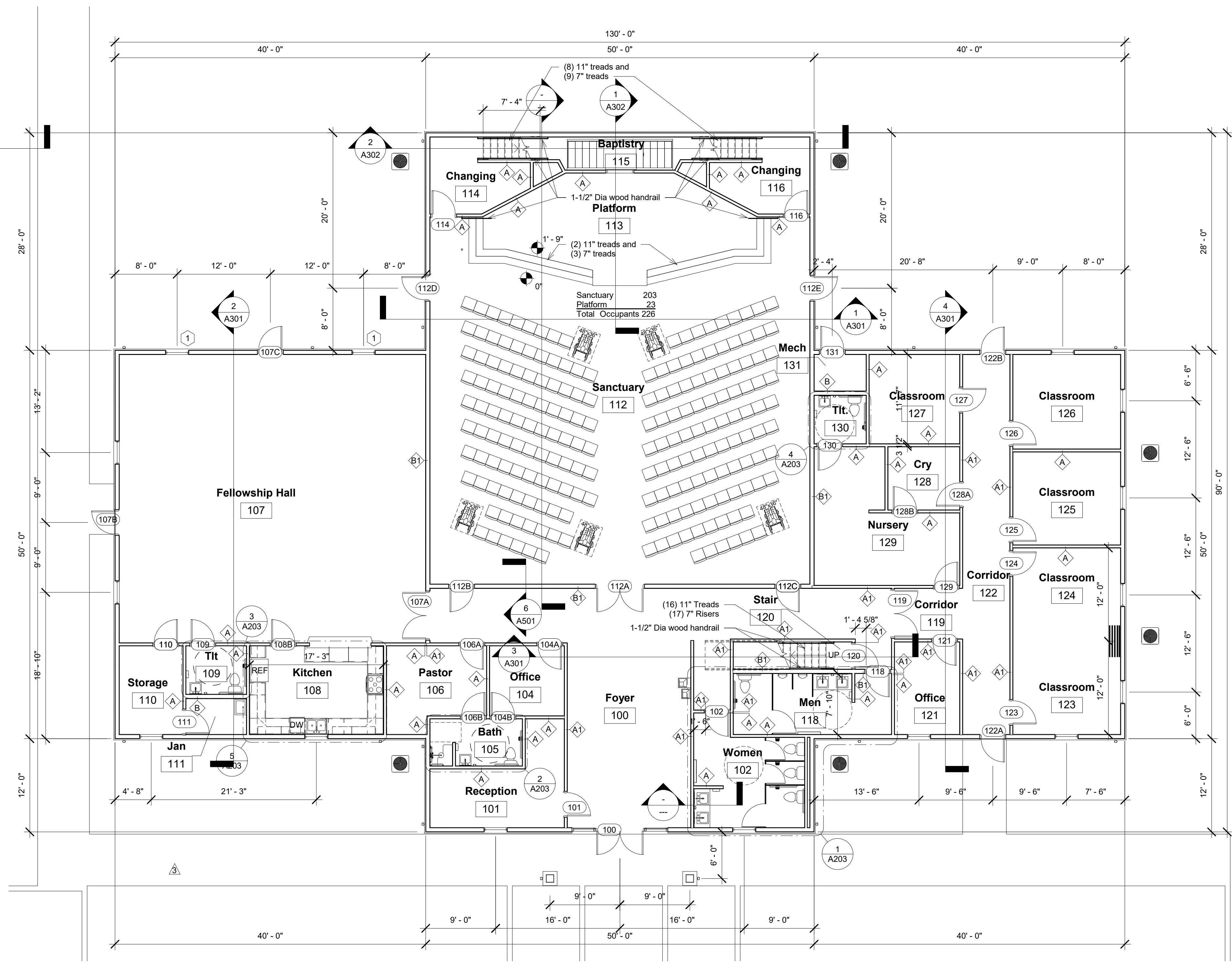
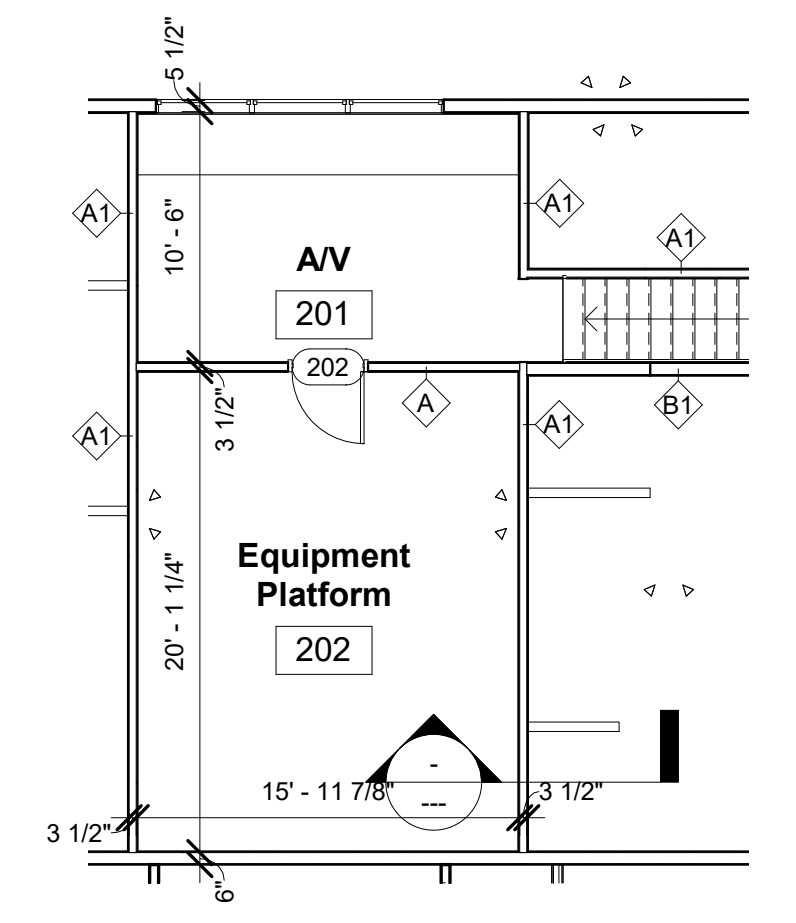
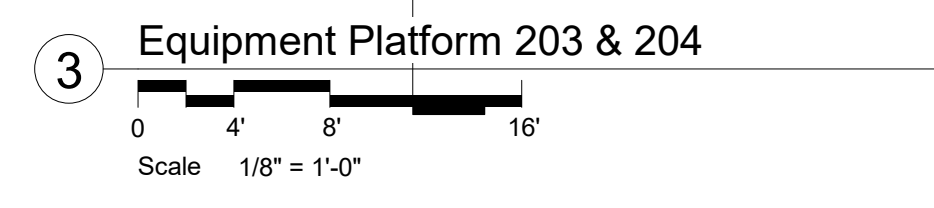
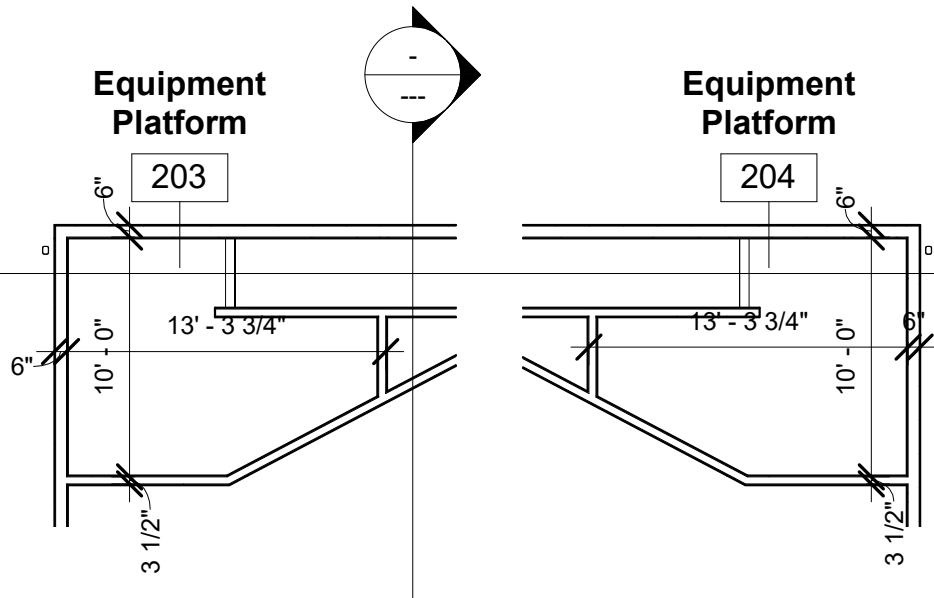


Floor Plan Notes

- All permanent signage must have letters and numbers raised 1/32 in. min. and must be accompanied with grade 2 braille (see signage details on sheet G101).
 - Restrooms to be appropriately identified with signage.
 - Upon completion owner must post building occupant load, live load, use group and construction type with appropriate signage. Each room occupancy load must also be posted.
- Corridors Class A
Rooms Class C
- Carpet - All carpet is required to meet critical radiant flux limits in accordance with NFPA Class I or II interior floor finishes must be tested by an approved test laboratory. A copy of this test report shall be submitted to the plan examiner's office. This carpet must be identified as required by NFPA.

Legend

- Fire extinguishers per OBC 906 and NFPA 10, 5 lb., type ABC mounted 48" AFF (min 4" above floor)
- Ladder access to Equipment Platform
- 1 HR rated, metal roll up door 9' wide by 3' high



Platform Lift Notes

- Code Reference: Lift shall comply with ASME A17.1 "Safety Code for Elevators and Escalators, and ASME A18.1 "Safety Standard for Platform Lifts and Stairway Chairlifts.
- General: Color - Standard (Anodized alum extrusions champagne finished with 16 ga. galvanized steel panels powder coated Satin Grey)
Indoor Unit - Pit mount
Number of stops - 2
- Controls: Model - GVL-EN-42
Lead screw drive system c/w Manual platform emergency lowering handwheel
Motor - 1.5 kW, (2.00 HP), 120/240
Travel speed - 340 kg @ 3.0 m-min (750 lb @ 10 ft/min)
Power supply - 120 V VAC, single phase, 60Hz, on a dedicated 20 Amp circuit
- Drive Mast: Platform controls - Rocker Type c/w Rocker (toggle) switch and illuminated round (push/pull) emergency stop switch/audible alarm
Lower landing call station - rocker type frame mount
Upper landing call station - rocker type frame mount
- Platform: Size - Standard c/w grab rail, anti-skid deck and 42" high walls
Configuration - see plan
Capacity - Max 750 lb operating load
- Door/Gates: Lower - 42" wide steel door c/w mechanical interlock
Upper - 42" wide steel door c/w mechanical interlock
- Enclosure: Panels - steel
Total unit weight - approx 825 lbs
Lifting Ht. 28" floor to floor plus 3" deep pit

Type Mark	Description	HR Rating	UL	Delineation
A	5/8" GWB, 2x4 studs @ 16" OC, 5/8" GWB			
A1	5/8" FC GWB, 2x4 studs @ 16" OC, 5/8" FC; to underside of roof deck		U305	
B	5/8" GWB, 2x6s @ 16" OC, 5/8" GWB			
B1	5/8" FC GWB, 2x6s @ 16" OC, 5/8" FC GWB; to underside of roof deck		U305	



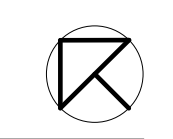
REVISION	
NO.	DATE
1	x

(c) Copyright 2021 Donald A. Highlander, Architect and ConnectingSpaces, LLC. These plans are the property of Donald A. Highlander, Architect and ConnectingSpaces, LLC, and may not be used, duplicated, altered, or posted to bidding exchanges and/or online viewing programs without written permission of the architect and ConnectingSpaces, LLC.

Harvest Christian Fellowship
New Building
North Bride Brook Rd
East Lyme, CT

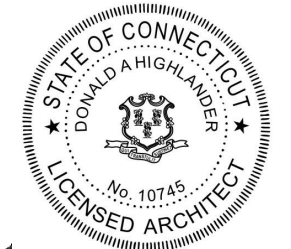


Floor Plan



DATE: 7/20/2021

A103

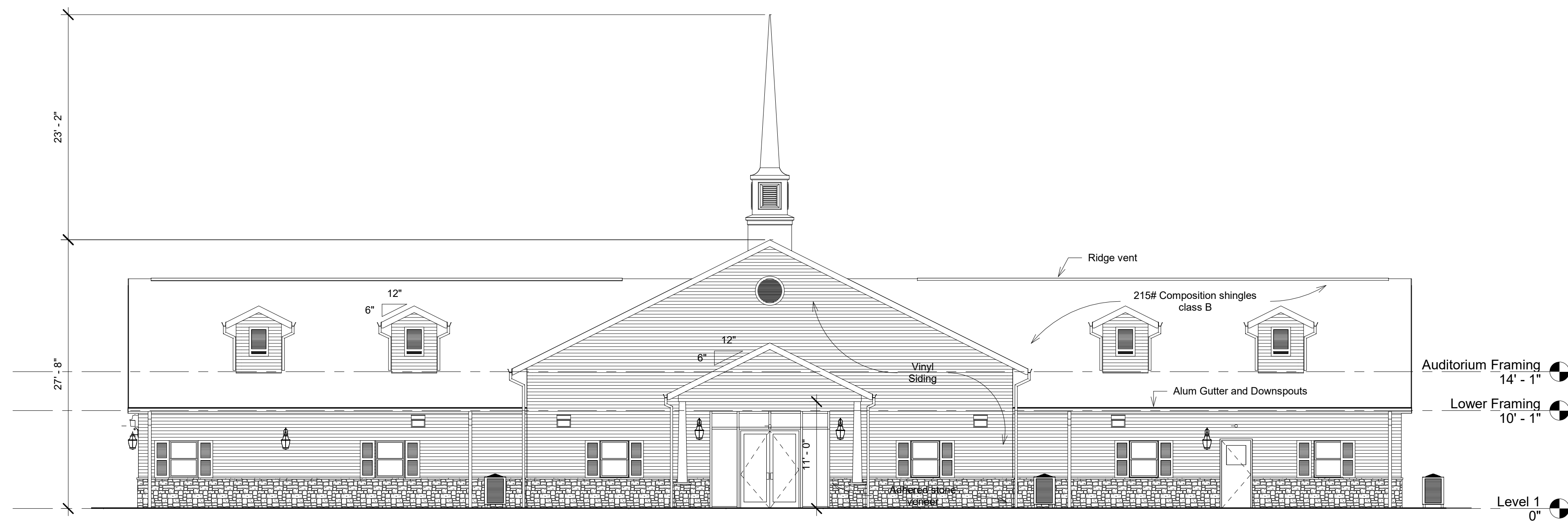


Donald A. Highlander

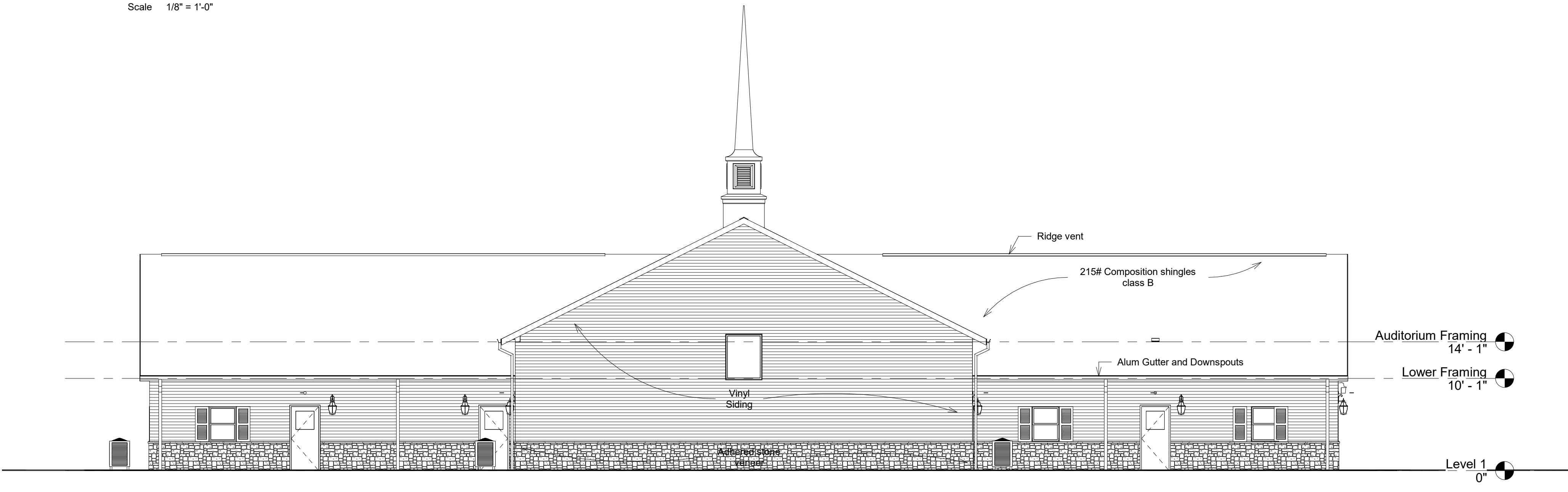
REVISION

NO.	DATE
1	x

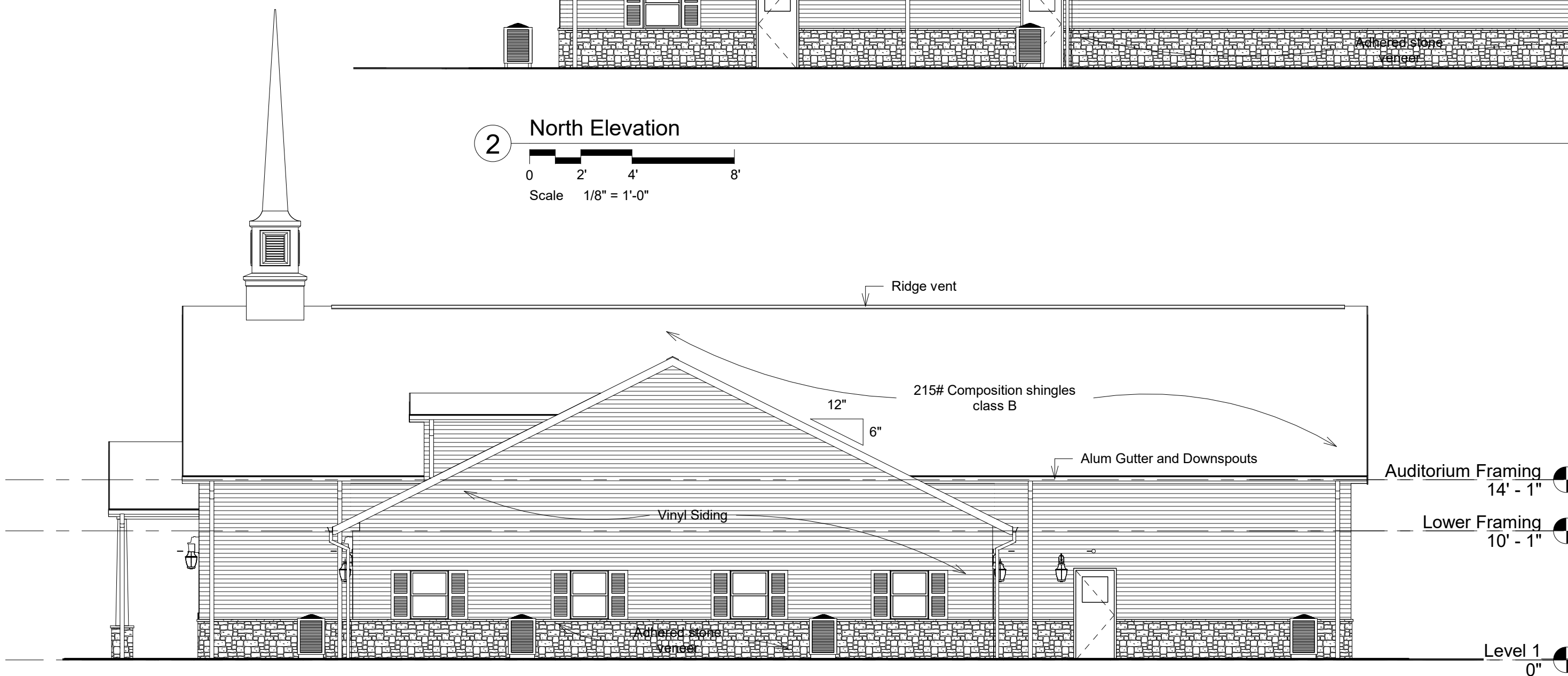
(c) Copyright 2021
 Donald A. Highlander, Architect
 ConnectingSpaces, LLC.
 These plans are the property of
 Donald A. Highlander, Architect
 and ConnectingSpaces, LLC.,
 and may not be used,
 duplicated, altered, or posted to
 bidding exchanges and/or
 online viewing programs without
 written permission of the
 architect and
 ConnectingSpaces, LLC.



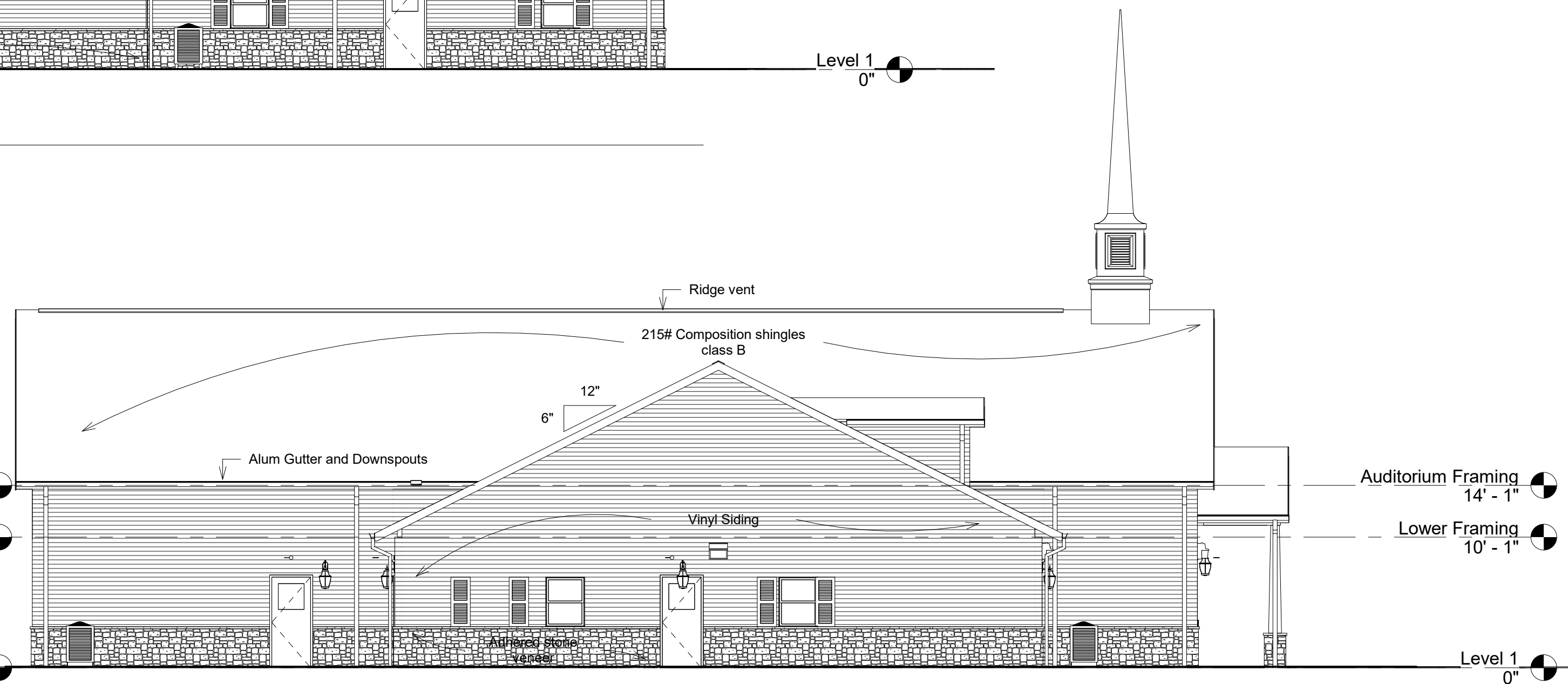
① South Elevation
 Scale 1/8" = 1'-0"



② North Elevation
 Scale 1/8" = 1'-0"

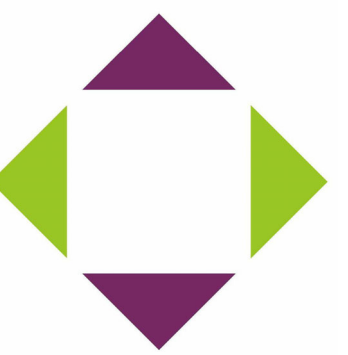


③ East Elevation
 Scale 1/8" = 1'-0"



④ West Elevation
 Scale 1/8" = 1'-0"

Harvest Christian Fellowship
 New Building
 North Bride Brook Rd
 East Lyme, CT



ConnectingSpaces LLC
 56 Milford Drive, Suite 2
 Hudson, Ohio 44236
 (330) 653-5320 V
 (330) 653-6320 F
 don@connectingspaces.com
 www.connectingspaces.com

Elevations

DATE:
7/20/2021

A201



Job Name:
 HARVEST CHRISTIAN FELLOWSHIP -
 SPEC SUBMITTAL
 Architect: Architect Unknown
 Distributor: House99 Dist

Catalog Number:
 COL21-VLED-II-100LED-525MA-NW-
 PT-***-HS

Notes:

Type:

L2S

LAI21-178044

SOLID STATE AREA LIGHTING

COLONIAL SERIES-LED

FEATURES

Luminaire

Durable, corrosion resistant, heavy cast low copper aluminum assembly (A356 alloy, <0.2% copper). Minimum wall thickness is .188". Traditional styling of the housing provided with cast aluminum housing top hinges for easy access. All hardware is stainless steel.

VLED® Optical Module

Low copper A356 alloy (<0.2% copper) cast aluminum housing. Integrated clear tempered 3/16" glass lens sealed with a continuous silicone gasket protects emitters (LED's) and emitter Reflector-Prism optics, and seals the module from water intrusion and environmental contaminants. LED's are available in standard Neutral White (4000K), or optional Cool White (5000K) or Warm White (3000K). Each emitter is optically controlled by a Reflector-Prism injection molded from H12 acrylic (3 types per module; one from 0° - 50°; one from 50° - 65°; one from 65° - 72°). Each Reflector-Prism has indexing pins for aiming and is secured to an optical plate made of matte black anodized aluminum. The optical plate locates every Reflector-Prism over an emitter. Reflector-Prisms are secured to the optical plate with a UV curing adhesive. The Reflector-Prisms are arrayed to produce IES Type II, III, IV, and V-SQ distributions. The entire VLED® Optical Module is field rotatable in 90° increments. Both module and drivers are factory wired using water resistant, insulated cord. Lens, module and drivers are field replaceable.

LED Emitters

High Output LED's are driven at 350mA for nominal 1 Watt output each or 525mA (COL21 and COL18 only) for nominal 1.5 Watt output each. LED's are available in standard Neutral White (4000K), or optional Cool White (5000K) or Warm White (3000K). Consult Factory for other LED options.

LED Driver

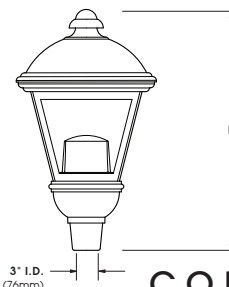
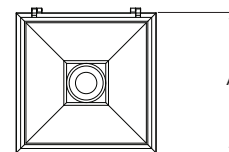
UL and CUL recognized High Power Factor, Constant Current LED drivers operate on input voltages from 120-277VAC, 50/60hz. Consult Factory for 347-480VAC. Driver is mechanically fastened to a retaining bracket. Main power quick disconnect provided. Driver has a minimum 4KV of internal surge protection, 10KV & 20KV Surge Protector optional. Dimming and High-Low Driver options available.

Finish

Electrostatically applied TGIC Polyester Powder Coat on substrate prepared with 20 PSI power wash at 140°F. Four step iron phosphate pretreatment for protection and paint adhesion. 400°F bake for maximum hardness and durability. Texture finish is standard.

PROJECT NAME: _____

FIXTURE TYPE: _____



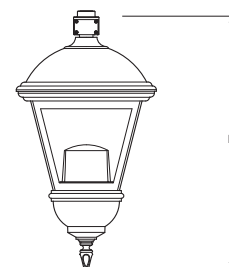
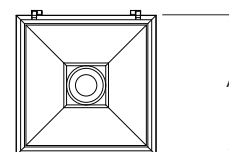
COL



PATENT PENDING

Filter supplied to fit over 2 7/8" X 3" (73mm X 76mm) tennon.

FIXTURE	A	B
COL21-LED	21" 533mm	35" 889mm
COL18-LED	18" 457mm	31" 787mm
COL12-LED	12" 305mm	22" 559mm



COL-PM-LED

PATENT PENDING

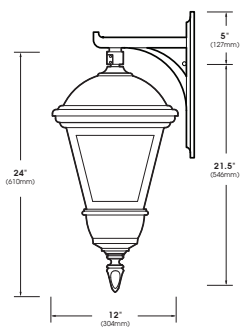
FIXTURE	A	B
COL21-PM-LED	21" 533mm	36" 914mm
COL18-PM-LED	18" 457mm	32.5" 826mm
COL12-PM-LED	12" 305mm	24" 610mm



COLONIAL - LED

SPECIFICATIONS

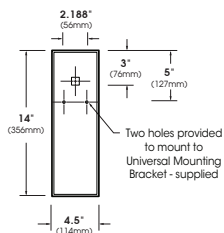
Wall Mounting



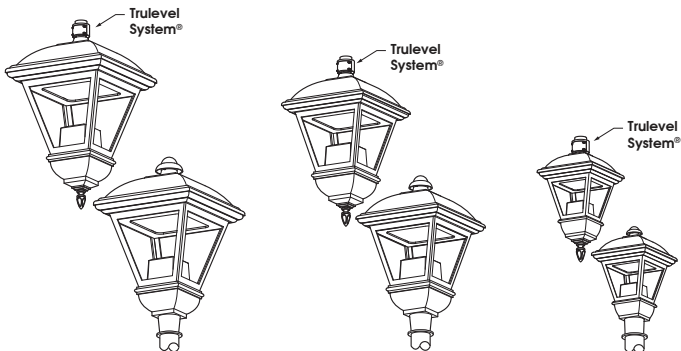
(COL12-WM shown)

Extruded aluminum arm and cast aluminum wall bracket assembly provided with built in gasketed wire access for fixture/supply wire connection.

Wall Plate



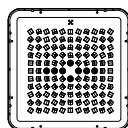
VLED® Modules



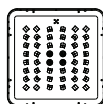
COL21-LED
COL21 E.P.A. = 2.03
COL21-PM E.P.A. = 1.93
Available in:
120 LED Max

COL18-LED
COL18 E.P.A. = 1.60
COL18-PM E.P.A. = 1.55
Available in:
64 LED Max

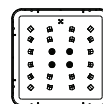
COL12-LED
COL12 E.P.A. = 0.90
COL12-PM E.P.A. = 0.81
Available in:
24 LED Module



120 LED Module



64 LED Module



24 LED Module

MAX INPUT WATTAGE

# OF LED's	DRIVE CURRENT 350mA	DRIVE CURRENT 525mA
120	130W	192W
100	110W	164W
80	85W	126W
64	69W	103W
48	55W	76W
24	26W	-

ORDERING INFORMATION

Spec/Order Example: COL21/VLED-VSQ/120LED CW/3-90/RAL7004/DF

Luminaire	Optics	LED Mode	Voltage	Mounting	Finish	Options
COL21-LED	Type II VLED-II	120LED 525mA NW (4000K)	<input type="checkbox"/> 120	<input type="checkbox"/> 1	<input type="checkbox"/> Black RAL-9005-T	<input type="checkbox"/> Internal House Side Shield HS
<input type="checkbox"/> COL21-PM-LED	<input type="checkbox"/> Type III VLED-III	<input type="checkbox"/> 80LED <input type="checkbox"/> 350mA <input type="checkbox"/> CW (5000K)	<input type="checkbox"/> 208	<input type="checkbox"/> 2-180	<input type="checkbox"/> White RAL-9003-T	<input type="checkbox"/> Dimmable Driver(s) (0-10V) DIM
<input type="checkbox"/> COL18-LED	<input type="checkbox"/> Type IV VLED-IV	<input type="checkbox"/> 64LED <input type="checkbox"/> WW (3000K)	<input type="checkbox"/> 240	<input type="checkbox"/> 2-90	<input type="checkbox"/> Grey RAL-7004-T	<input type="checkbox"/> High-Low Dimming for Hardwired Switching or Non-Integrated Motion Sensor HLSW
<input type="checkbox"/> COL18-PM-LED	<input type="checkbox"/> Type V VLED-VSQ	COL18 <input type="checkbox"/> 64LED <input type="checkbox"/> 48LED	<input type="checkbox"/> 277 <input type="checkbox"/> 347 <input type="checkbox"/> 480	<input type="checkbox"/> 3-90	<input type="checkbox"/> Dark Bronze RAL-8019-T	<input type="checkbox"/> 10KV Surge Protector 10SP
<input type="checkbox"/> COL12-LED	<input type="checkbox"/> Type Symmetric VPA-SYM*	COL12 <input type="checkbox"/> 24LED ¹		<input type="checkbox"/> 3-120	<input type="checkbox"/> Green RAL-6005-T	<input type="checkbox"/> 20KV (277V & 480V only) 20SP
<input type="checkbox"/> COL12-PM-LED				<input type="checkbox"/> 4-90		<input type="checkbox"/> Photo Cell + Voltage (Example: PC120V) PC+V
				Wallmount <input type="checkbox"/> WM	For smooth finish replace suffix "T" with suffix "S" (Example: RAL-9500-S)	<input type="checkbox"/> Twist Lock Receptacle Only (COL21 and COL18 only) TPR
				Post Top <input checked="" type="checkbox"/> PT	Consult factor for custom colors	<input type="checkbox"/> Single Fuse (120V, 277V) SF
						<input type="checkbox"/> Double Fuse (208V, 240V) DF

SOLID STATE AREA LIGHTING

COLONIAL SERIES-LED

FEATURES

Luminaire

Durable, corrosion resistant, heavy cast low copper aluminum assembly (A356 alloy, <0.2% copper). Minimum wall thickness is .188". Traditional styling of the housing provided with cast aluminum housing top hinges for easy access. All hardware is stainless steel.

VLED® Optical Module

Low copper A356 alloy (<0.2% copper) cast aluminum housing. Integrated clear tempered 3/16" glass lens sealed with a continuous silicone gasket protects emitters (LED's) and emitter Reflector-Prism optics, and seals the module from water intrusion and environmental contaminants. LED's are available in standard Neutral White (4000K), or optional Cool White (5000K) or Warm White (3000K). Each emitter is optically controlled by a Reflector-Prism injection molded from H12 acrylic (3 types per module; one from 0° - 50°; one from 50° - 65°; one from 65° - 72°). Each Reflector-Prism has indexing pins for aiming and is secured to an optical plate made of matte black anodized aluminum. The optical plate locates every Reflector-Prism over an emitter. Reflector-Prisms are secured to the optical plate with a UV curing adhesive. The Reflector-Prisms are arrayed to produce IES Type II, III, IV, and V-SQ distributions. The entire VLED® Optical Module is field rotatable in 90° increments. Both module and drivers are factory wired using water resistant, insulated cord. Lens, module and drivers are field replaceable.

LED Emitters

High Output LED's are driven at 350mA for nominal 1 Watt output each or 525mA (COL21 and COL18 only) for nominal 1.5 Watt output each. LED's are available in standard Neutral White (4000K), or optional Cool White (5000K) or Warm White (3000K). Consult Factory for other LED options.

LED Driver

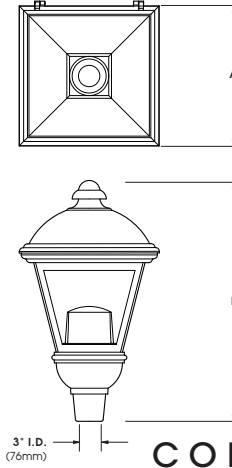
UL and CUL recognized High Power Factor, Constant Current LED drivers operate on input voltages from 120-277VAC, 50/60hz. Consult Factory for 347-480VAC. Driver is mechanically fastened to a retaining bracket. Main power quick disconnect provided. Driver has a minimum 4KV of internal surge protection, 10KV & 20KV Surge Protector optional. Dimming and High-Low Driver options available.

Finish

Electrostatically applied TGIC Polyester Powder Coat on substrate prepared with 20 PSI power wash at 140°F. Four step iron phosphate pretreatment for protection and paint adhesion. 400°F bake for maximum hardness and durability. Texture finish is standard.

PROJECT NAME: _____

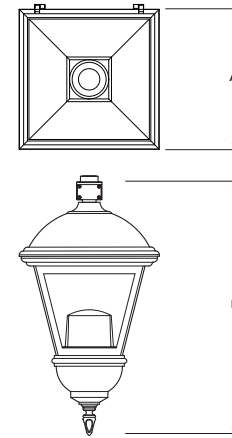
FIXTURE TYPE: _____



PATENT PENDING

Filter supplied to fit over 2 1/4" X 3" (73mm X 76mm) tennon.

FIXTURE	A	B
COL21-LED	21" 533mm	35" 889mm
COL18-LED	18" 457mm	31" 787mm
COL12-LED	12" 305mm	22" 559mm



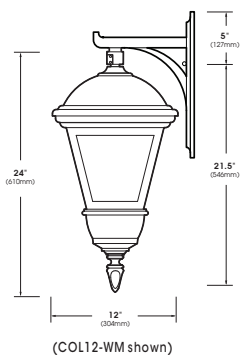
PATENT PENDING

FIXTURE	A	B
COL21-PM-LED	21" 533mm	36" 914mm
COL18-PM-LED	18" 457mm	32.5" 826mm
COL12-PM-LED	12" 305mm	24" 610mm

COLONIAL - LED

SPECIFICATIONS

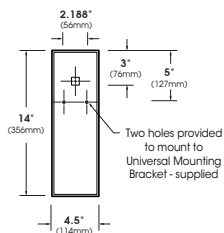
Wall Mounting



(COL12-WM shown)

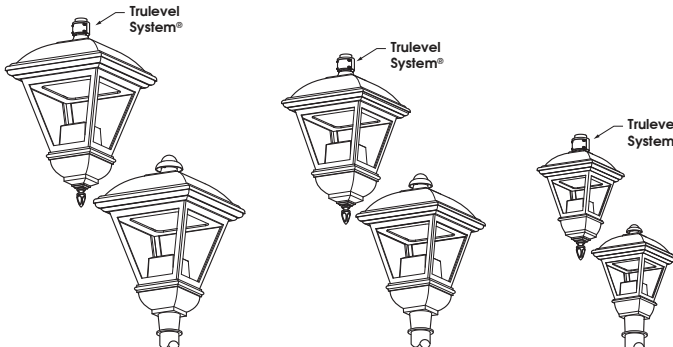
Extruded aluminum arm and cast aluminum wall bracket assembly provided with built in gasketed wire access for fixture/supply wire connection.

Wall Plate



Two holes provided to mount to Universal Mounting Bracket - supplied

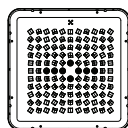
VLED® Modules



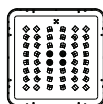
COL21-LED
COL21 E.P.A. = 2.03
COL21-PM E.P.A. = 1.93
Available in:
120 LED Max

COL18-LED
COL18 E.P.A. = 1.60
COL18-PM E.P.A. = 1.55
Available in:
64 LED Max

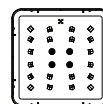
COL12-LED
COL12 E.P.A. = 0.90
COL12-PM E.P.A. = 0.81
Available in:
24 LED Module



120 LED Module



64 LED Module



24 LED Module

MAX INPUT WATTAGE

# OF LED's	DRIVE CURRENT 350mA	DRIVE CURRENT 525mA
120	130W	192W
100	110W	164W
80	85W	126W
64	69W	103W
48	55W	76W
24	26W	-

ORDERING INFORMATION

Spec/Order Example: COL21/VLED-VSQ/120LED CW/3-90/RAL7004/DF

Luminaire	Optics	LED Mode	Voltage	Mounting	Finish	Options
COL21-LED	Type II VLED-II	# of LEDs: 120LED, 525mA, 100LED, 350mA	120, 208, 240, 277, 347, 480	1, 2-180, 2-90, 3-90, 3-120, 4-90	Black RAL-9005-T, White RAL-9003-T, Grey RAL-7004-T, Dark Bronze RAL-8019-T, Green RAL-6005-T	Internal House Side Shield HS, Dimmable Driver(s) DIM, High-Low Dimming for Hardwired Switching or Non-Integrated Motion Sensor HLSW, 10KV Surge Protector 10SP, 20KV (277V & 480V only) 20SP, Photo Cell + Voltage (Example: PC120V) PC+V, Twist Lock Receptacle Only (COL21 and COL18 only) TPR, Single Fuse (120V, 277V) SF, Double Fuse (208V, 240V) DF
COL21-PM-LED	Type III VLED-III	80LED, 64LED				
COL18-LED	Type IV VLED-IV	64LED, 48LED				
COL18-PM-LED	Type V VLED-VSQ					
COL12-LED	Type Symmetric VPA-SYM*	COL12, 24LED ¹		Wallmount, WM, Post Top, PT	For smooth finish replace suffix "T" with suffix "S" (Example: RAL-9500-S)	
COL12-PM-LED						

SOLID STATE AREA LIGHTING

COLONIAL SERIES-LED

FEATURES

Luminaire

Durable, corrosion resistant, heavy cast low copper aluminum assembly (A356 alloy, <0.2% copper). Minimum wall thickness is .188". Traditional styling of the housing provided with cast aluminum housing top hinges for easy access. All hardware is stainless steel.

VLED® Optical Module

Low copper A356 alloy (<0.2% copper) cast aluminum housing. Integrated clear tempered 3/16" glass lens sealed with a continuous silicone gasket protects emitters (LED's) and emitter Reflector-Prism optics, and seals the module from water intrusion and environmental contaminants. LED's are available in standard Neutral White (4000K), or optional Cool White (5000K) or Warm White (3000K). Each emitter is optically controlled by a Reflector-Prism injection molded from H12 acrylic (3 types per module; one from 0° - 50°; one from 50° - 65°; one from 65° - 72°). Each Reflector-Prism has indexing pins for aiming and is secured to an optical plate made of matte black anodized aluminum. The optical plate locates every Reflector-Prism over an emitter. Reflector-Prisms are secured to the optical plate with a UV curing adhesive. The Reflector-Prisms are arrayed to produce IES Type II, III, IV, and V-SQ distributions. The entire VLED® Optical Module is field rotatable in 90° increments. Both module and drivers are factory wired using water resistant, insulated cord. Lens, module and drivers are field replaceable.

LED Emitters

High Output LED's are driven at 350mA for nominal 1 Watt output each or 525mA (COL21 and COL18 only) for nominal 1.5 Watt output each. LED's are available in standard Neutral White (4000K), or optional Cool White (5000K) or Warm White (3000K). Consult Factory for other LED options.

LED Driver

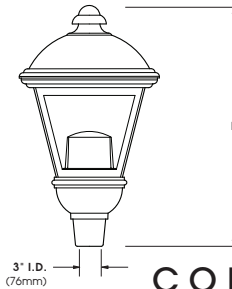
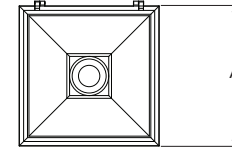
UL and CUL recognized High Power Factor, Constant Current LED drivers operate on input voltages from 120-277VAC, 50/60hz. Consult Factory for 347-480VAC. Driver is mechanically fastened to a retaining bracket. Main power quick disconnect provided. Driver has a minimum 4KV of internal surge protection, 10KV & 20KV Surge Protector optional. Dimming and High-Low Driver options available.

Finish

Electrostatically applied TGIC Polyester Powder Coat on substrate prepared with 20 PSI power wash at 140°F. Four step iron phosphate pretreatment for protection and paint adhesion. 400°F bake for maximum hardness and durability. Texture finish is standard.

PROJECT NAME: _____

FIXTURE TYPE: _____



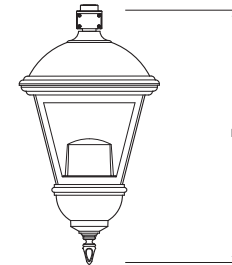
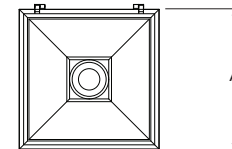
COL



PATENT PENDING

Filter supplied to fit over 2 7/8" X 3" (73mm X 76mm) tennon.

FIXTURE	A	B
COL21-LED	21" 533mm	35" 889mm
COL18-LED	18" 457mm	31" 787mm
COL12-LED	12" 305mm	22" 559mm



COL-PM-LED

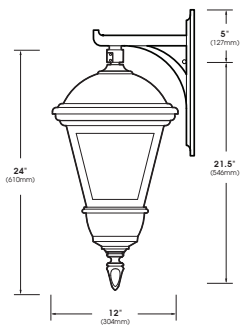
PATENT PENDING

FIXTURE	A	B
COL21-PM-LED	21" 533mm	36" 914mm
COL18-PM-LED	18" 457mm	32.5" 826mm
COL12-PM-LED	12" 305mm	24" 610mm

COLONIAL - LED

SPECIFICATIONS

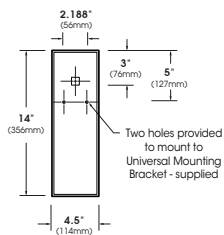
Wall Mounting



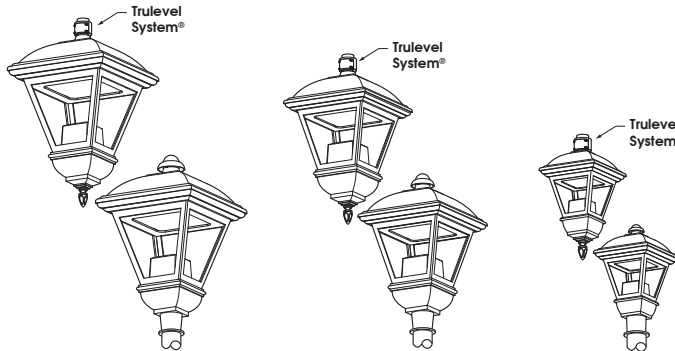
(COL12-WM shown)

Extruded aluminum arm and cast aluminum wall bracket assembly provided with built in gasketed wire access for fixture/supply wire connection.

Wall Plate



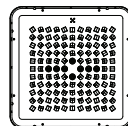
VLED® Modules



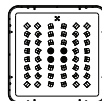
COL21-LED
COL21 E.P.A. = 2.03
COL21-PM E.P.A. = 1.93
Available in:
120 LED Max

COL18-LED
COL18 E.P.A. = 1.60
COL18-PM E.P.A. = 1.55
Available in:
64 LED Max

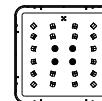
COL12-LED
COL12 E.P.A. = 0.90
COL12-PM E.P.A. = 0.81
Available in:
24 LED Module



120 LED Module



64 LED Module



24 LED Module

MAX INPUT WATTAGE

# OF LED's	DRIVE CURRENT 350mA	DRIVE CURRENT 525mA
120	130W	192W
100	110W	164W
80	85W	126W
64	69W	103W
48	55W	76W
24	26W	-

ORDERING INFORMATION

Spec/Order Example: COL21/VLED-VSQ/120LED CW/3-90/RAL7004/DF

Luminaire	Optics	LED Mode	Voltage	Mounting	Finish	Options
COL21-LED	VLED®	LED	Voltage	Mounting	Finish	Options
<input type="checkbox"/> COL21-PM-LED	<input type="checkbox"/> Type II VLED-II	# of LEDs	<input type="checkbox"/> 120	<input type="checkbox"/> 1	<input type="checkbox"/> Black RAL-9005-T	<input type="checkbox"/> Internal House Side Shield HS
<input type="checkbox"/> COL18-LED	<input type="checkbox"/> Type III VLED-III	<input type="checkbox"/> 120LED	<input type="checkbox"/> 208	<input type="checkbox"/> 2-180	<input type="checkbox"/> White RAL-9003-T	<input type="checkbox"/> Dimmable Driver(s) (0-10V) DIM
<input type="checkbox"/> COL18-PM-LED	<input type="checkbox"/> Type IV VLED-IV	<input type="checkbox"/> 80LED	<input type="checkbox"/> 240	<input type="checkbox"/> 2-90	<input type="checkbox"/> Grey RAL-7004-T	<input type="checkbox"/> High-Low Dimming for Hardwired Switching or Non-Integrated Motion Sensor HLSW
<input type="checkbox"/> COL12-LED	<input type="checkbox"/> Type V VLED-VSQ	<input type="checkbox"/> 64LED	<input type="checkbox"/> 277	<input type="checkbox"/> 3-90	<input type="checkbox"/> Dark Bronze RAL-8019-T	<input type="checkbox"/> 10KV Surge Protector 10SP
<input type="checkbox"/> COL12-PM-LED	<input type="checkbox"/> Type Symmetric VPA-SYM*	<input type="checkbox"/> 64LED	<input type="checkbox"/> 347	<input type="checkbox"/> 3-120	<input type="checkbox"/> Green RAL-6005-T	<input type="checkbox"/> 20KV (277V & 480V only) 20SP
		<input type="checkbox"/> 48LED	<input type="checkbox"/> 480	<input type="checkbox"/> 4-90		<input type="checkbox"/> Photo Cell + Voltage (Example: PC120V) PC+V
		COL18		Wallmount		<input type="checkbox"/> Twist Lock Receptacle Only (COL21 and COL18 only) TPR
		<input type="checkbox"/> 64LED		<input type="checkbox"/> WM		<input type="checkbox"/> Single Fuse (120V, 277V) SF
		<input type="checkbox"/> 48LED		<input type="checkbox"/> Post Top		<input type="checkbox"/> Double Fuse (208V, 240V) DF
		COL12		<input type="checkbox"/> PT	For smooth finish replace suffix "T" with suffix "S" (Example: RAL-9500-S) Consult factor for custom colors	
		<input type="checkbox"/> 24LED ¹				
		NOTES: 1 - 350mA only				

SOLID STATE AREA LIGHTING

COLONIAL SERIES-LED

FEATURES

Luminaire

Durable, corrosion resistant, heavy cast low copper aluminum assembly (A356 alloy, <0.2% copper). Minimum wall thickness is .188". Traditional styling of the housing provided with cast aluminum housing top hinges for easy access. All hardware is stainless steel.

VLED® Optical Module

Low copper A356 alloy (<0.2% copper) cast aluminum housing. Integrated clear tempered 3/16" glass lens sealed with a continuous silicone gasket protects emitters (LED's) and emitter Reflector-Prism optics, and seals the module from water intrusion and environmental contaminants. LED's are available in standard Neutral White (4000K), or optional Cool White (5000K) or Warm White (3000K). Each emitter is optically controlled by a Reflector-Prism injection molded from H12 acrylic (3 types per module; one from 0° - 50°; one from 50° - 65°; one from 65° - 72°). Each Reflector-Prism has indexing pins for aiming and is secured to an optical plate made of matte black anodized aluminum. The optical plate locates every Reflector-Prism over an emitter. Reflector-Prisms are secured to the optical plate with a UV curing adhesive. The Reflector-Prisms are arrayed to produce IES Type II, III, IV, and V-SQ distributions. The entire VLED® Optical Module is field rotatable in 90° increments. Both module and drivers are factory wired using water resistant, insulated cord. Lens, module and drivers are field replaceable.

LED Emitters

High Output LED's are driven at 350mA for nominal 1 Watt output each or 525mA (COL21 and COL18 only) for nominal 1.5 Watt output each. LED's are available in standard Neutral White (4000K), or optional Cool White (5000K) or Warm White (3000K). Consult Factory for other LED options.

LED Driver

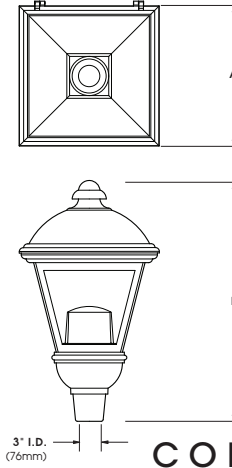
UL and CUL recognized High Power Factor, Constant Current LED drivers operate on input voltages from 120-277VAC, 50/60hz. Consult Factory for 347-480VAC. Driver is mechanically fastened to a retaining bracket. Main power quick disconnect provided. Driver has a minimum 4KV of internal surge protection, 10KV & 20KV Surge Protector optional. Dimming and High-Low Driver options available.

Finish

Electrostatically applied TGIC Polyester Powder Coat on substrate prepared with 20 PSI power wash at 140°F. Four step iron phosphate pretreatment for protection and paint adhesion. 400°F bake for maximum hardness and durability. Texture finish is standard.

PROJECT NAME: _____

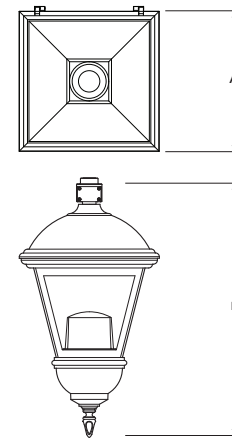
FIXTURE TYPE: _____



PATENT PENDING

Filter supplied to fit over 2 1/4" X 3" (73mm X 76mm) tennon.

FIXTURE	A	B
COL21-LED	21" 533mm	35" 889mm
COL18-LED	18" 457mm	31" 787mm
COL12-LED	12" 305mm	22" 559mm



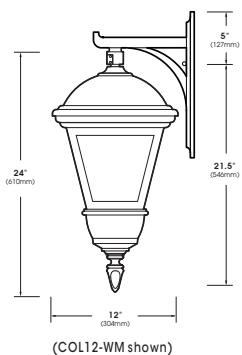
PATENT PENDING

FIXTURE	A	B
COL21-PM-LED	21" 533mm	36" 914mm
COL18-PM-LED	18" 457mm	32.5" 826mm
COL12-PM-LED	12" 305mm	24" 610mm

COLONIAL - LED

SPECIFICATIONS

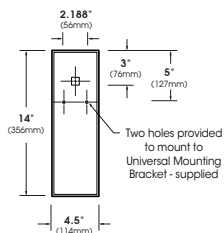
Wall Mounting



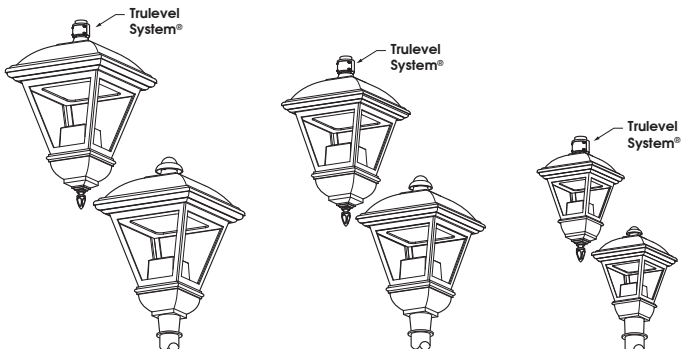
(COL12-WM shown)

Extruded aluminum arm and cast aluminum wall bracket assembly provided with built in gasketed wire access for fixture/supply wire connection.

Wall Plate



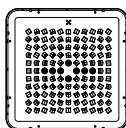
VLED® Modules



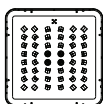
COL21-LED
COL21 E.P.A. = 2.03
COL21-PM E.P.A. = 1.93
Available in:
120 LED Max

COL18-LED
COL18 E.P.A. = 1.60
COL18-PM E.P.A. = 1.55
Available in:
64 LED Max

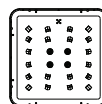
COL12-LED
COL12 E.P.A. = 0.90
COL12-PM E.P.A. = 0.81
Available in:
24 LED Module



120 LED Module



64 LED Module



24 LED Module

MAX INPUT WATTAGE

# OF LED's	DRIVE CURRENT 350mA	525mA
120	130W	192W
100	110W	164W
80	85W	126W
64	69W	103W
48	55W	76W
24	26W	-

ORDERING INFORMATION

Spec/Order Example: COL21/VLED-VSQ/120LED CW/3-90/RAL7004/DF

Luminaire	Optics	LED Mode	Voltage	Mounting	Finish	Options
COL21-LED	Type II VLED-II	# of LEDs	120	1	Black RAL-9005-T	Internal House Side Shield HS
COL21-PM-LED	Type III VLED-III	100LED	208	2-180	White RAL-9003-T	Dimmable Driver(s) (0-10V) DIM
	Type IV VLED-IV	80LED	240	2-90	Grey RAL-7004-T	High-Low Dimming for Hardwired Switching or Non-Integrated Motion Sensor HLSW
COL18-LED	Type V VLED-VSQ	64LED	277	3-90	Dark Bronze RAL-8019-T	10KV Surge Protector 10SP
COL18-PM-LED		48LED	347	3-120	Green RAL-6005-T	20KV (277V & 480V only) 20SP
COL12-LED		COL12	480	4-90		Photo Cell + Voltage (Example: PC120V) PC+V
COL12-PM-LED	Type Symmetric VPA-SYM*	24LED ¹		Wallmount		Twist Lock Receptacle Only (COL21 and COL18 only) TPR
				Post Top		Single Fuse (120V, 277V) SF
				PT		Double Fuse (208V, 240V) DF



Job Name:
 HARVEST CHRISTIAN FELLOWSHIP -
 SPEC SUBMITTAL
 Architect: Architect Unknown
 Distributor: House99 Dist

Catalog Number:
 COL21-VLED-IV-100LED-525MA-NW-
 PT-***-HS
 Notes:

Type:
L4S
 LAI21-178044

SOLID STATE AREA LIGHTING

COLONIAL SERIES-LED

FEATURES

Luminaire

Durable, corrosion resistant, heavy cast low copper aluminum assembly (A356 alloy, <0.2% copper). Minimum wall thickness is .188". Traditional styling of the housing provided with cast aluminum housing top hinges for easy access. All hardware is stainless steel.

VLED® Optical Module

Low copper A356 alloy (<0.2% copper) cast aluminum housing. Integrated clear tempered 3/16" glass lens sealed with a continuous silicone gasket protects emitters (LED's) and emitter Reflector-Prism optics, and seals the module from water intrusion and environmental contaminants. LED's are available in standard Neutral White (4000K), or optional Cool White (5000K) or Warm White (3000K). Each emitter is optically controlled by a Reflector-Prism injection molded from H12 acrylic (3 types per module; one from 0° - 50°; one from 50° - 65°; one from 65° - 72°). Each Reflector-Prism has indexing pins for aiming and is secured to an optical plate made of matte black anodized aluminum. The optical plate locates every Reflector-Prism over an emitter. Reflector-Prisms are secured to the optical plate with a UV curing adhesive. The Reflector-Prisms are arrayed to produce IES Type II, III, IV, and V-SQ distributions. The entire VLED® Optical Module is field rotatable in 90° increments. Both module and drivers are factory wired using water resistant, insulated cord. Lens, module and drivers are field replaceable.

LED Emitters

High Output LED's are driven at 350mA for nominal 1 Watt output each or 525mA (COL21 and COL18 only) for nominal 1.5 Watt output each. LED's are available in standard Neutral White (4000K), or optional Cool White (5000K) or Warm White (3000K). Consult Factory for other LED options.

LED Driver

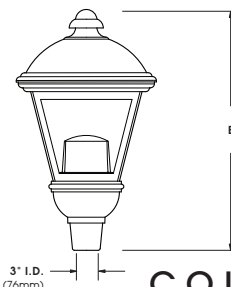
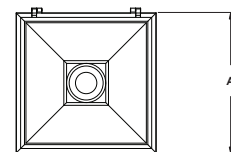
UL and CUL recognized High Power Factor, Constant Current LED drivers operate on input voltages from 120-277VAC, 50/60hz. Consult Factory for 347-480VAC. Driver is mechanically fastened to a retaining bracket. Main power quick disconnect provided. Driver has a minimum 4KV of internal surge protection, 10KV & 20KV Surge Protector optional. Dimming and High-Low Driver options available.

Finish

Electrostatically applied TGIC Polyester Powder Coat on substrate prepared with 20 PSI power wash at 140°F. Four step iron phosphate pretreatment for protection and paint adhesion. 400°F bake for maximum hardness and durability. Texture finish is standard.

PROJECT NAME: _____

FIXTURE TYPE: _____



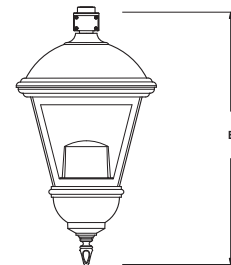
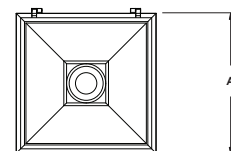
COL



PATENT PENDING

Filter supplied to fit over 2 7/8" X 3" (73mm X 76mm) tennon.

FIXTURE	A	B
COL21-LED	21" 533mm	35" 889mm
COL18-LED	18" 457mm	31" 787mm
COL12-LED	12" 305mm	22" 559mm



COL-PM-LED

PATENT PENDING

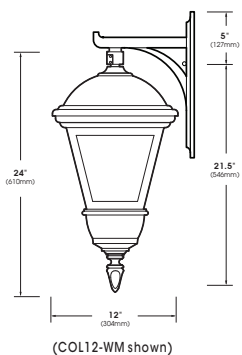
FIXTURE	A	B
COL21-PM-LED	21" 533mm	36" 914mm
COL18-PM-LED	18" 457mm	32.5" 826mm
COL12-PM-LED	12" 305mm	24" 610mm



COLONIAL - LED

SPECIFICATIONS

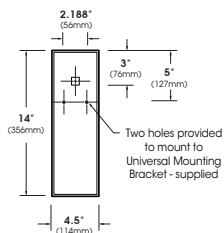
Wall Mounting



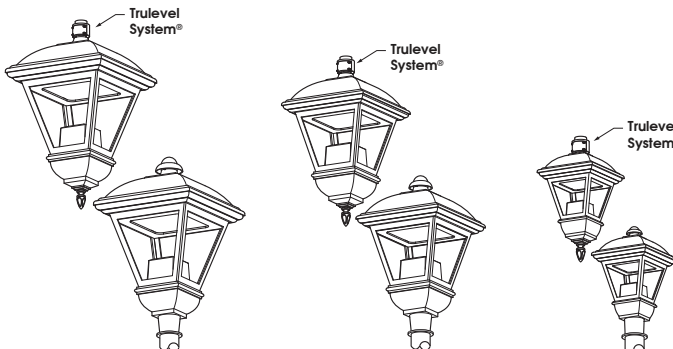
(COL12-WM shown)

Extruded aluminum arm and cast aluminum wall bracket assembly provided with built in gasketed wire access for fixture/supply wire connection.

Wall Plate



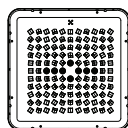
VLED® Modules



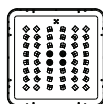
COL21-LED
COL21 E.P.A. = 2.03
COL21-PM E.P.A. = 1.93
Available in:
120 LED Max

COL18-LED
COL18 E.P.A. = 1.60
COL18-PM E.P.A. = 1.55
Available in:
64 LED Max

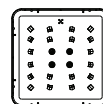
COL12-LED
COL12 E.P.A. = 0.90
COL12-PM E.P.A. = 0.81
Available in:
24 LED Module



120 LED Module



64 LED Module



24 LED Module

MAX INPUT WATTAGE

# OF LED's	DRIVE CURRENT 350mA	DRIVE CURRENT 525mA
120	130W	192W
100	110W	164W
80	85W	126W
64	69W	103W
48	55W	76W
24	26W	-

ORDERING INFORMATION

Spec/Order Example: COL21/VLED-VSQ/120LED CW/3-90/RAL7004/DF

Luminaire	Optics	LED Mode	Voltage	Mounting	Finish	Options
COL21-LED COL21-PM-LED	Type II VLED-II Type III VLED-III Type IV VLED-IV Type V VLED-VSQ	LED # of LEDs COL21 120LED 100LED 80LED 64LED COL18 64LED 48LED COL12 24LED ¹	Color Temp - CCT NW (4000K)* CW (5000K) WW (3000K) Other LED Colors Available Consult Factory	120 208 240 277 347 480	1 2-180 2-90 3-90 3-120 4-90	Standard Textured Finish Black RAL-9005-T White RAL-9003-T Grey RAL-7004-T Dark Bronze RAL-8019-T Green RAL-6005-T
COL18-LED COL18-PM-LED	Type Symmetric VPA-SYM*			Wallmount WM Post Top PT	For smooth finish replace suffix "T" with suffix "S" (Example: RAL-9500-S) Consult factor for custom colors	Internal House Side Shield HS Dimmable Driver(s) (0-10V) DIM High-Low Dimming for Hardwired Switching or Non-Integrated Motion Sensor HLSW 10KV Surge Protector 10SP 20KV (277V & 480V only) 20SP Photo Cell + Voltage (Example: PC120V) PC+V Twist Lock Receptacle Only (COL21 and COL18 only) TPR Single Fuse (120V, 277V) SF Double Fuse (208V, 240V) DF

Job Name:

HARVEST CHRISTIAN FELLOWSHIP -
SPEC SUBMITTAL
Architect: Architect Unknown
Distributor: House99 Dist

Catalog Number:

COL12-WM-PLED-III-W-20LED-
525MA-NW-WM

Notes:

Type:**WM3**

LAI21-178044

SOLID STATE LIGHTING

COLONIAL WALL MOUNT-PLED

SPECIFICATIONS

FIXTURE HOUSING

Hub, Cage, and Top (Hood) consist of cast low copper (A356 alloy; < 0.2%Cu) aluminum. Hood is fastened to the top of the Cage with a stainless steel hinge and secured with a single stainless steel hex head cap screw 180° opposite the hinge. Hood and Cage are sealed with an extruded closed cell silicone gasket. Cage is welded to the Hub with blended or concealed weldments to create an open frame appearance. Driver/wiring accessed through top of Electrical Access Hub. All exposed hardware is stainless steel. Optical Assembly secures in Hood.

ARM

One piece unitized arm and Wall Mount plate consisting of cast low copper (A356 alloy; < 0.2% Cu) aluminum. Arm is welded to the Wall Mount plate and entire Arm/Wall Mount assembly is either welded to the COL12 Hood (WM-P) or mechanically fastened to the Hub (WM-T). All welds are blended to create a homogeneous appearance. Wall Mount plate affixed to mounting surface covering a recessed j-box.

PLED™ OPTICS

Emitters (LED's) are arrayed on a metal core PCB panel with each emitter located on a copper thermal transfer pad and enclosed by an LED refractor. In asymmetric distributions, a micro-reflector inside the refractor re-directs the house side emitter output towards the street side and functions as a house side shielding element. Refractors are injection molded H12 acrylic. Each LED refractor is sealed to the PCB over an emitter and all refractors are retained by an aluminum frame. LED refractors produce standard asymmetric site/area distributions. Panels are field replaceable and field rotatable in 90° increments.

LED DRIVER(S)

Constant current electronic with a power factor of > .90 and a minimum operating temperature of -40°F. Driver(s) is/are UL and cUL recognized. In-line terminal blocks facilitate wiring between the driver and optical arrays. Drivers accept an input of 120-277V, 50/60Hz or 347V-480V, 50, 60Hz. (0 - 10V dimmable driver is standard. Driver has a minimum of 3KV internal surge protection. Luminaire supplied with 20KV surge protector for field accessible installation.)

LED EMITTERS

High output LED's are utilized with drive currents ranging from 175mA to 525mA. 70CRI Minimum. LED's are available in standard Neutral White (4000K), or optional Cool White (5000K) or Warm White (3000K). Consult Factory for other LED options.

AMBER LED's

PCA (Phosphor Converted Amber) LED's utilize phosphors to create color output similar to LPS lamps and have a slight output in the blue spectral bandwidth. **TRA** (True Amber) LED's utilize material that emits light in the amber spectral bandwidth only without the use of phosphors.

FINISH

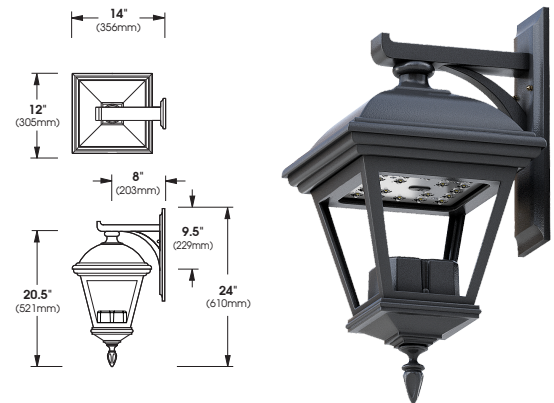
Electrostatically applied TGIC Polyester Powder Coat on substrate prepared with 20 PSI power wash at 140°F. Four step media blast and iron phosphate pretreatment for protection and paint adhesion. 400°F bake for maximum hardness and durability.

PROJECT NAME: _____

FITURE TYPE: _____

**COL12/XCA-UT (Post Top Mount)**

PATENT PENDING

**COL12/XCA-UP (Pendant Mount)**

PATENT PENDING



2020289

Sun Valley Lighting

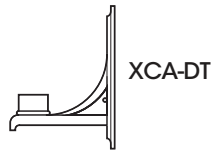
660 West Avenue O, Palmdale, CA 93551
Phone (661) 233-2000 Fax (661) 233-2001
www.usaltg.com



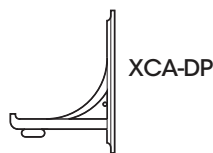
COLONIAL WALL MOUNT - PLED

SPECIFICATIONS

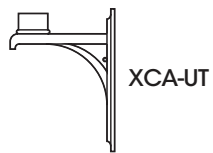
MOUNTING OPTIONS



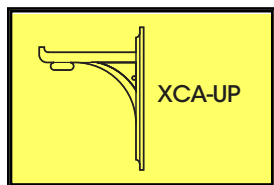
XCA-DT



XCA-DP

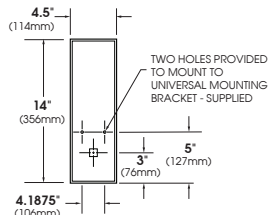


XCA-UT



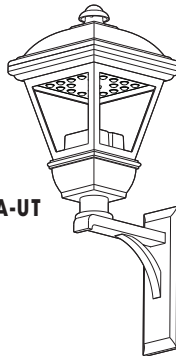
XCA-UP

WALL PLATE



MOUNTING HARDWARE BY OTHERS.

PLED® MODULES

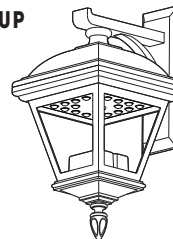


COL12/XCA-UT
E.P.A. = .94
Available in:
20 LED Max.



20 LED MODULE

COL12/XCA-UP
E.P.A. = .82
Available in:
20 LED Max.



Spec/Order Example: COL12/XCA-UP/PLED-III M/20LED-450mA/NW/277V/RAL-9005-T/PC+V

SPEC / ORDERING INFORMATION

LUMINAIRE & MOUNTING	OPTICS	# of LED's	DRIVE CURRENT	COLOR	VOLTAGE	FINISH	OPTIONS
LUMINAIRE & MOUNTING	OPTICS	LED		COLOR TEMP-CCT	VOLTAGE	FINISH	OPTIONS
<input type="checkbox"/> COL12/XCA-DT <input type="checkbox"/> COL12/XCA-DP <input type="checkbox"/> COL12/XCA-UT <input checked="" type="checkbox"/> COL12/XCA-UP	PLED® MODULES IES DISTRIBUTION TYPE <input type="checkbox"/> TYPE II PLED-II <input type="checkbox"/> TYPE II FRONT ROW PLED-II-FR <input type="checkbox"/> TYPE III MED. PLED-III-M <input checked="" type="checkbox"/> TYPE III WIDE PLED-III-W <input type="checkbox"/> TYPE IV PLED-IV <input type="checkbox"/> TYPE IV PLED-IV-FT	<input checked="" type="checkbox"/> 20LED	<input type="checkbox"/> 175mA <input type="checkbox"/> 350mA <input type="checkbox"/> 450mA <input checked="" type="checkbox"/> 525mA	<input checked="" type="checkbox"/> NW (4000K) <input type="checkbox"/> CW (5000K) <input type="checkbox"/> WW (3000K) OTHER LED COLORS AVAILABLE CONSULT FACTORY AMBER ¹ <input type="checkbox"/> PHOSPHOR CONVERTED AMBER PCA <input type="checkbox"/> TRUE AMBER TRA	<input type="checkbox"/> 120 <input type="checkbox"/> 208 <input type="checkbox"/> 240 <input type="checkbox"/> 277 <input type="checkbox"/> 347 <input type="checkbox"/> 480	STANDARD TEXTURED FINISH <input type="checkbox"/> BLACK RAL-9005-T <input type="checkbox"/> WHITE RAL-9003-T <input type="checkbox"/> GREY RAL-7004-T <input type="checkbox"/> DARK BRONZE RAL-8019-T <input type="checkbox"/> GREEN RAL-6005-T	<input type="checkbox"/> HOUSE SIDE SHIELDS. . . HS-PLED <input type="checkbox"/> HIGH-LOW DIMMING FOR HARDWIRED SWITCHING OR NON-INTEGRATED MOTION SENSOR HLSW <input type="checkbox"/> PHOTO CELL + VOLTAGE (EXAMPLE: PC120V) PC+V <input type="checkbox"/> SINGLE FUSE (120V, 277V) SF <input type="checkbox"/> DOUBLE FUSE (208V, 240V) DF CONTACT FACTORY FOR STEP DIM MOTION SENSOR (PROGRAMMED 25-50/100) SEE USALTG.COM FOR ADDITIONAL COLORS
		<small>NOTES: 1 - NARROW BAND AMBERS HAVE NO DEFINABLE CCT EQUIVALENT</small>					



COLONIAL WALL MOUNT - PLED ELECTRICAL GUIDE

LED COUNT	SOURCE TYPE	SOURCE	INITIAL LUMENS - 4000K	INITIAL LUMENS - 3000K	INITIAL LUMENS - 5000K	L70 GREATER THAN (HR)-TM21	STARTING TEMP.	SYSTEM WATTS	VOLTS	MAX INPUT AMPS
20	LED	20 PLED [®] Optical Module - 175mA	1,141 - 1,257	1,084 - 1,194	1,198 - 1,320	85,000+	-20°F	11	120 277	0.09 0.04
20	LED	20 PLED [®] Optical Module - 350mA	2,074 - 2,285	1,970 - 2,171	2,178 - 2,399	85,000+	-20°F	22	120 277	0.18 0.09
20	LED	20 PLED [®] Optical Module - 450mA	2,564 - 2,824	2,435 - 2,683	2,692 - 2,966	85,000+	-20°F	29	120 277	0.23 0.10
20	LED	20 PLED [®] Optical Module - 525mA	2,987 - 3,290	2,837 - 3,126	3,136 - 3,455	85,000+	-20°F	33	120 277	0.27 0.12

NOTES:

1. Max Input Amps is the highest of starting, operating, or open circuit currents
2. Lumen values for LED Modules vary according to the distribution type
3. System Watts includes the source watts and all driver components.
4. Fuse value should be sufficient to protect all wiring components. For electronic driver and LED component protection, use 10KV - 20KV surge suppressors.
5. L70(14K) - TM-21 6x rule applied

WARNING: All fixtures must be installed in accordance with local codes or the National Electrical Code. Failure to do so may result in serious personal injury.



Job Name:

HARVEST CHRISTIAN FELLOWSHIP -
SPEC SUBMITTAL
Architect: Architect Unknown
Distributor: House99 Dist

Catalog Number:

COL12-WM-PLED-III-W-20LED-
525MA-NW-WM

Notes:

Type:

WM3

LAI21-178044

This page intentionally left blank for printing purposes

Job Name:

HARVEST CHRISTIAN FELLOWSHIP -
SPEC SUBMITTAL
Architect: Architect Unknown
Distributor: House99 Dist

Catalog Number:

COL12-WM-PLED-IV-FT-20LED-
525MA-NW-WM

Notes:

Type:**WM4**

LAI21-178044

SOLID STATE LIGHTING

COLONIAL WALL MOUNT-PLED

SPECIFICATIONS

FIXTURE HOUSING

Hub, Cage, and Top (Hood) consist of cast low copper (A356 alloy; < 0.2%Cu) aluminum. Hood is fastened to the top of the Cage with a stainless steel hinge and secured with a single stainless steel hex head cap screw 180° opposite the hinge. Hood and Cage are sealed with an extruded closed cell silicone gasket. Cage is welded to the Hub with blended or concealed weldments to create an open frame appearance. Driver/wiring accessed through top of Electrical Access Hub. All exposed hardware is stainless steel. Optical Assembly secures in Hood.

ARM

One piece unitized arm and Wall Mount plate consisting of cast low copper (A356 alloy; < 0.2% Cu) aluminum. Arm is welded to the Wall Mount plate and entire Arm/Wall Mount assembly is either welded to the COL12 Hood (WM-P) or mechanically fastened to the Hub (WM-T). All welds are blended to create a homogeneous appearance. Wall Mount plate affixed to mounting surface covering a recessed j-box.

PLED™ OPTICS

Emitters (LED's) are arrayed on a metal core PCB panel with each emitter located on a copper thermal transfer pad and enclosed by an LED refractor. In asymmetric distributions, a micro-reflector inside the refractor re-directs the house side emitter output towards the street side and functions as a house side shielding element. Refractors are injection molded H12 acrylic. Each LED refractor is sealed to the PCB over an emitter and all refractors are retained by an aluminum frame. LED refractors produce standard asymmetric site/area distributions. Panels are field replaceable and field rotatable in 90° increments.

LED DRIVER(S)

Constant current electronic with a power factor of > .90 and a minimum operating temperature of -40°F. Driver(s) is/are UL and cUL recognized. In-line terminal blocks facilitate wiring between the driver and optical arrays. Drivers accept an input of 120-277V, 50/60Hz or 347V-480V, 50, 60Hz. (0 - 10V dimmable driver is standard. Driver has a minimum of 3KV internal surge protection. Luminaire supplied with 20KV surge protector for field accessible installation.)

LED EMITTERS

High output LED's are utilized with drive currents ranging from 175mA to 525mA. 70CRI Minimum. LED's are available in standard Neutral White (4000K), or optional Cool White (5000K) or Warm White (3000K). Consult Factory for other LED options.

AMBER LED's

PCA (Phosphor Converted Amber) LED's utilize phosphors to create color output similar to LPS lamps and have a slight output in the blue spectral bandwidth. **TRA** (True Amber) LED's utilize material that emits light in the amber spectral bandwidth only without the use of phosphors.

FINISH

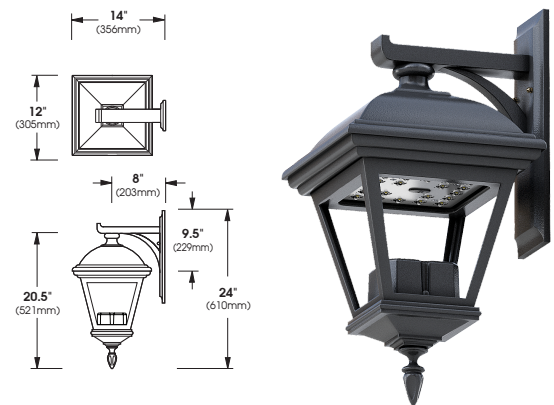
Electrostatically applied TGIC Polyester Powder Coat on substrate prepared with 20 PSI power wash at 140°F. Four step media blast and iron phosphate pretreatment for protection and paint adhesion. 400°F bake for maximum hardness and durability.

PROJECT NAME: _____

FIXTURE TYPE: _____

**COL12/XCA-UT (Post Top Mount)**

PATENT PENDING

**COL12/XCA-UP (Pendant Mount)**

PATENT PENDING

Sun Valley Lighting

660 West Avenue O, Palmdale, CA 93551
Phone (661) 233-2000 Fax (661) 233-2001
www.usaltg.com



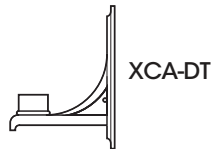
2020289



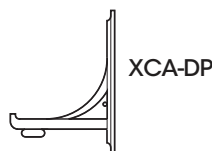
COLONIAL WALL MOUNT - PLED

S P E C I F I C A T I O N S

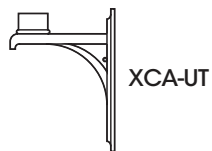
MOUNTING OPTIONS



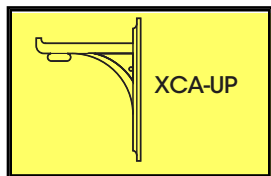
XCA-DT



XCA-DP

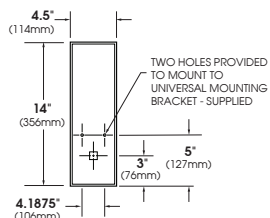


XCA-UT



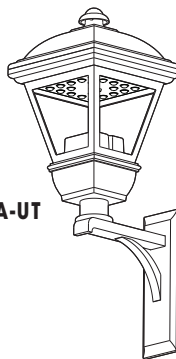
XCA-UP

WALL PLATE



MOUNTING HARDWARE BY OTHERS.

PLED® MODULES

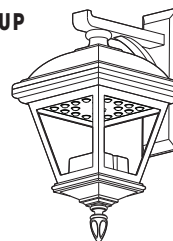


COL12/XCA-UT
E.P.A. = .94
Available in:
20 LED Max.



20 LED MODULE

COL12/XCA-UP
E.P.A. = .82
Available in:
20 LED Max.



Spec/Order Example: COL12/XCA-UP/PLED-III M/20LED-450mA/NW/277V/RAL-9005-T/PC+V

S P E C / O R D E R I N G I N F O R M A T I O N

LUMINAIRE & MOUNTING	OPTICS	# of LED's	DRIVE CURRENT	COLOR	VOLTAGE	FINISH	OPTIONS
LUMINAIRE & MOUNTING	OPTICS	LED		COLOR	VOLTAGE	FINISH	OPTIONS
<input type="checkbox"/> COL12/XCA-DT <input type="checkbox"/> COL12/XCA-DP <input type="checkbox"/> COL12/XCA-UT <input checked="" type="checkbox"/> COL12/XCA-UP	PLED® MODULES IES DISTRIBUTION TYPE <input type="checkbox"/> TYPE II PLED-II <input type="checkbox"/> TYPE II FRONT ROW PLED-II-FR <input type="checkbox"/> TYPE III MED. PLED-III-M <input type="checkbox"/> TYPE III WIDE PLED-III-W <input type="checkbox"/> TYPE IV PLED-IV <input checked="" type="checkbox"/> TYPE IV PLED-IV-FT	<input checked="" type="checkbox"/> 20LED	<input type="checkbox"/> 175mA <input type="checkbox"/> 350mA <input type="checkbox"/> 450mA <input checked="" type="checkbox"/> 525mA	<input checked="" type="checkbox"/> NW (4000K) *STANDARD <input type="checkbox"/> CW (5000K) <input type="checkbox"/> WW (3000K) OTHER LED COLORS AVAILABLE CONSULT FACTORY AMBER ¹ <input type="checkbox"/> PHOSPHOR CONVERTED AMBER PCA <input type="checkbox"/> TRUE AMBER TRA	<input type="checkbox"/> 120 <input type="checkbox"/> 208 <input type="checkbox"/> 240 <input type="checkbox"/> 277 <input type="checkbox"/> 347 <input type="checkbox"/> 480	STANDARD TEXTURED FINISH <input type="checkbox"/> BLACK RAL-9005-T <input type="checkbox"/> WHITE RAL-9003-T <input type="checkbox"/> GREY RAL-7004-T <input type="checkbox"/> DARK BRONZE RAL-8019-T <input type="checkbox"/> GREEN RAL-6005-T	<input type="checkbox"/> HOUSE SIDE SHIELDS. . . HS-PLED <input type="checkbox"/> HIGH-LOW DIMMING FOR HARDWIRED SWITCHING OR NON-INTEGRATED MOTION SENSOR HLSW <input type="checkbox"/> PHOTO CELL + VOLTAGE (EXAMPLE: PC120V) PC+V <input type="checkbox"/> SINGLE FUSE (120V, 277V) SF <input type="checkbox"/> DOUBLE FUSE (208V, 240V) DF CONTACT FACTORY FOR STEP DIM MOTION SENSOR (PROGRAMMED 25-50/100)
		<small>NOTES: 1 - NARROW BAND AMBERS HAVE NO DEFINABLE CCT EQUIVALENT</small>		<small>FOR SMOOTH FINISH REPLACE SUFFIX "T" WITH SUFFIX "S" (EXAMPLE: RAL-9500-S)</small> <small>SEE USALTG.COM FOR ADDITIONAL COLORS</small>		<small>CONTACT FACTORY FOR STEP DIM MOTION SENSOR (PROGRAMMED 25-50/100)</small>	



COLONIAL WALL MOUNT - PLED ELECTRICAL GUIDE

LED COUNT	SOURCE TYPE	SOURCE	INITIAL LUMENS - 4000K	INITIAL LUMENS - 3000K	INITIAL LUMENS - 5000K	L70 GREATER THAN (HR)-TM21	STARTING TEMP.	SYSTEM WATTS	VOLTS	MAX INPUT AMPS
20	LED	20 PLED [®] Optical Module - 175mA	1,141 - 1,257	1,084 - 1,194	1,198 - 1,320	85,000+	-20°F	11	120 277	0.09 0.04
20	LED	20 PLED [®] Optical Module - 350mA	2,074 - 2,285	1,970 - 2,171	2,178 - 2,399	85,000+	-20°F	22	120 277	0.18 0.09
20	LED	20 PLED [®] Optical Module - 450mA	2,564 - 2,824	2,435 - 2,683	2,692 - 2,966	85,000+	-20°F	29	120 277	0.23 0.10
20	LED	20 PLED [®] Optical Module - 525mA	2,987 - 3,290	2,837 - 3,126	3,136 - 3,455	85,000+	-20°F	33	120 277	0.27 0.12

NOTES:

1. Max Input Amps is the highest of starting, operating, or open circuit currents
2. Lumen values for LED Modules vary according to the distribution type
3. System Watts includes the source watts and all driver components.
4. Fuse value should be sufficient to protect all wiring components. For electronic driver and LED component protection, use 10KV - 20KV surge suppressors.
5. L70(14K) - TM-21 6x rule applied

WARNING: All fixtures must be installed in accordance with local codes or the National Electrical Code. Failure to do so may result in serious personal injury.





Job Name:

HARVEST CHRISTIAN FELLOWSHIP -
SPEC SUBMITTAL
Architect: Architect Unknown
Distributor: House99 Dist

Catalog Number:

COL12-WM-PLED-IV-FT-20LED-
525MA-NW-WM

Notes:

Type:

WM4

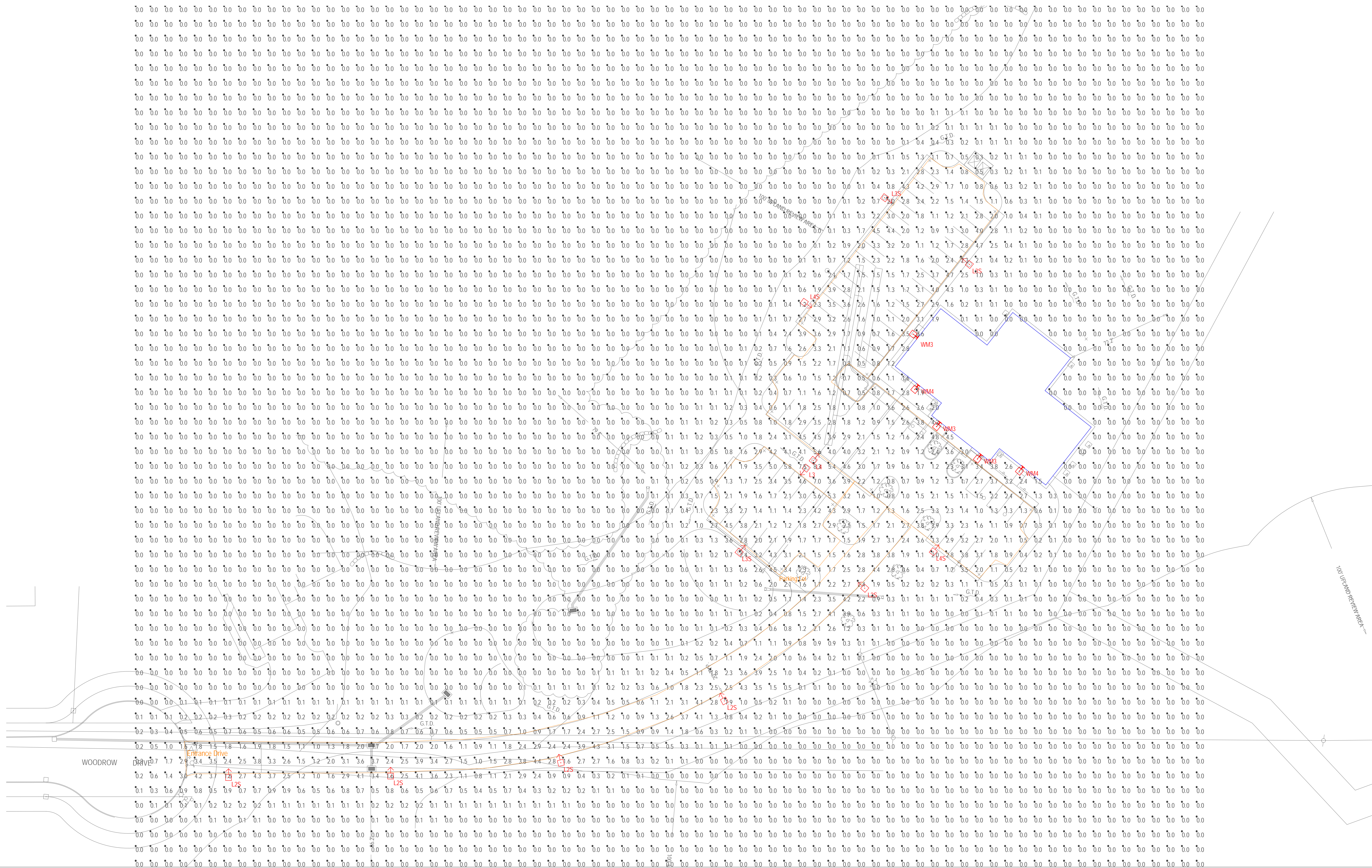
LAI21-178044

This page intentionally left blank for printing purposes

TYPE L: 16'0" Mounting Height
 TYPE WM: 9'0" Mounting Height

Symbol	Qty	Label	Arrangement	Manufacturer	Description	Lum. Lumens	Lum. Watts	LLF
[Symbol]	5	L2S	SINGLE	SUN VALLEY LIGHTING	COL21-VLED-II-100LED-525mA-NW-HS	10561	160	0.920
[Symbol]	1	L3	SINGLE	SUN VALLEY LIGHTING	COL21-VLED-III-100LED-525mA-NW	14412	160	0.920
[Symbol]	3	L3S	SINGLE	SUN VALLEY LIGHTING	COL21-VLED-III-100LED-525mA-NW-HS	10519	160	0.920
[Symbol]	1	L4	SINGLE	SUN VALLEY LIGHTING	COL21-VLED-IV-100LED-525mA-NW	13417	160	0.920
[Symbol]	2	L4S	SINGLE	SUN VALLEY LIGHTING	COL21-VLED-IV-100LED-525mA-NW-HS	10251	160	0.920
[Symbol]	3	WM3	SINGLE	U.S. ARCHITECTURAL LIGHTING	COL12-WM-PLD-III-W-20LED-525mA-NW	3361	33	0.920
[Symbol]	2	WM4	SINGLE	U.S. ARCHITECTURAL LIGHTING	COL12-WM-PLD-IV-FT-20LED-525mA-NW	3253	33	0.920

Label	Calc Type	Units	Avg	Max	Min	Avg/Min	Max/Min
Entrance Drive	Illuminance	Fc	2.37	4.4	0.8	2.96	5.50
Parking Lot	Illuminance	Fc	2.18	5.8	0.5	4.36	11.60



U.S. ARCHITECTURAL & SUN VALLEY LIGHTING
 660 W AVE O PALMDALE CA 93551
 (661) 233-2000

NOTES:
 See schedule for luminaire specifications.
 Luminaire Symbols are not to scale.
 Varying the position, mounting height, or orientation from what is specified in this drawing will invalidate the calculation performed.

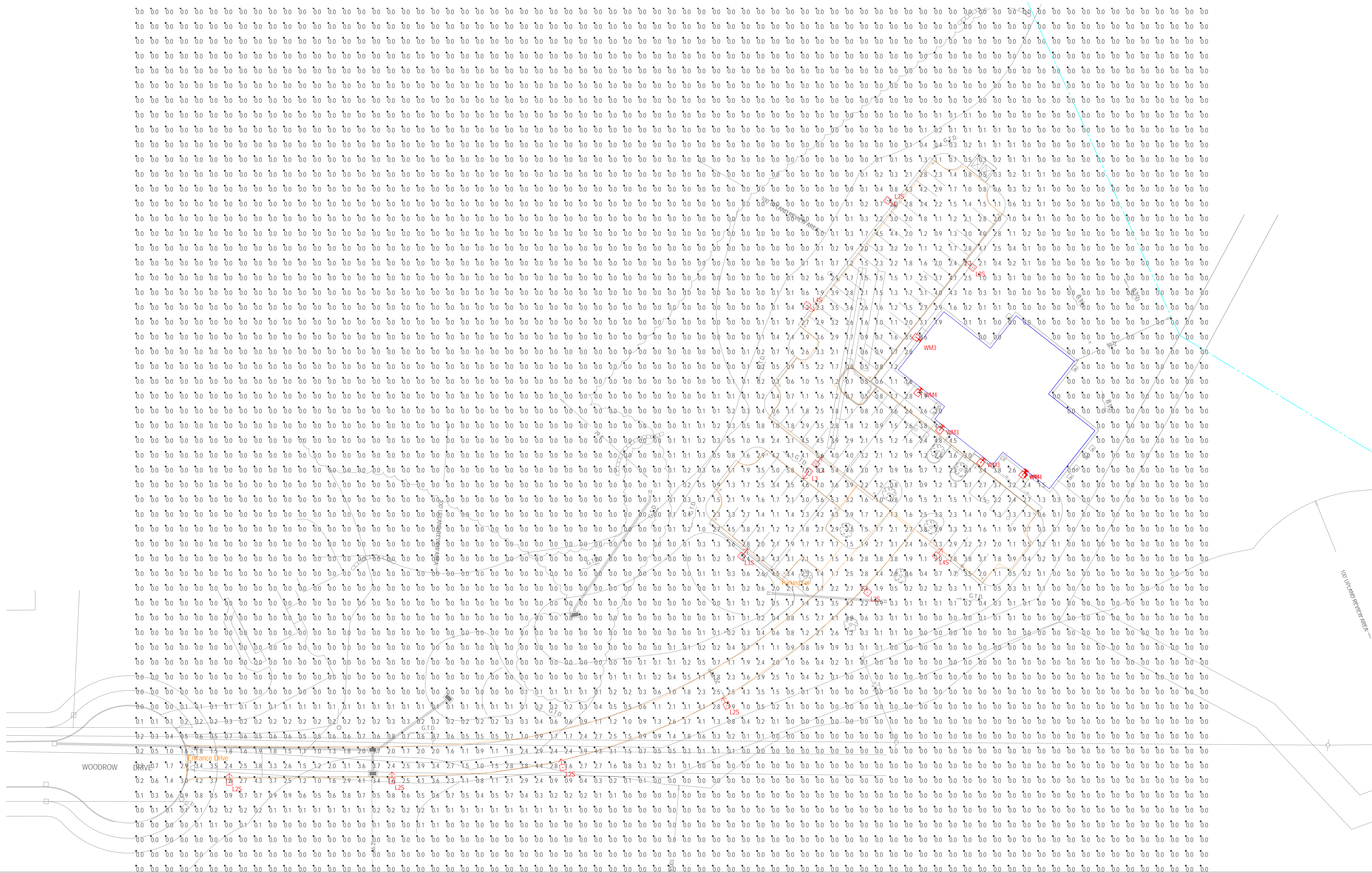
DRAWN BY: L.C.P.
 AGENCY: LAI
 Date: 5/19/2021
 SCALE: 1" = 30'0"

Point-By-Point Illuminance Calculation
 (At Grade)
 N BRIDGEBROOK RD.

TYPE L: 16'0" Mounting Height
 TYPE WM: 9'0" Mounting Height

Symbol	Qty	Label	Arrangement	Manufacturer	Description	Lum. Lumens	Lum. Watts	LLF
[Symbol]	5	L2S	SINGLE	SUN VALLEY LIGHTING	COL21-VLED-II-100LED-525mA-NW-HS	10561	160	0.920
[Symbol]	1	L3	SINGLE	SUN VALLEY LIGHTING	COL21-VLED-III-100LED-525mA-NW	14412	160	0.920
[Symbol]	3	L3S	SINGLE	SUN VALLEY LIGHTING	COL21-VLED-III-100LED-525mA-NW-HS	10519	160	0.920
[Symbol]	1	L4	SINGLE	SUN VALLEY LIGHTING	COL21-VLED-IV-100LED-525mA-NW	13417	160	0.920
[Symbol]	2	L4S	SINGLE	SUN VALLEY LIGHTING	COL21-VLED-IV-100LED-525mA-NW-HS	10251	160	0.920
[Symbol]	3	WM3	SINGLE	U.S. ARCHITECTURAL LIGHTING	COL12-WM-PLD-III-W-20LED-525mA-NW	3361	33	0.920
[Symbol]	2	WM4	SINGLE	U.S. ARCHITECTURAL LIGHTING	COL12-WM-PLD-IV-FT-20LED-525mA-NW	3253	33	0.920

Calculation Summary							
Label	Calc Type	Units	Avg	Max	Min	Avg/Min	Max/Min
Entrance Drive	Illuminance	Fc	2.37	4.4	0.8	2.96	5.50
Parking Lot	Illuminance	Fc	2.18	5.8	0.5	4.36	11.60



U.S. ARCHITECTURAL & SUN VALLEY LIGHTING
 660 W AVE O PALMDALE CA 93551
 (661) 233-2000

NOTES:
 See schedule for luminaire specifications.
 Luminaire Symbols are not to scale.
 Varying the position, mounting height, or orientation from what is specified in this drawing will invalidate the calculation performed.

DRAWN BY: L.C.P.
 AGENCY: LAI
 Date: 5/19/2021
 SCALE: 1" = 30'0"

Point-By-Point Illuminance Calculation
 (At Grade)
 N BRIDEBROOK RD.