

Planning Commission Regular Meeting Minutes

Tuesday October 20th, 2015

Present: Francine Schwartz
Brian Schuch, Chairman
Ernie Covino

Also Present: Gary Goeschel, Planning Director
Anne Thurlow, Alternate (Sat as a Regular Member)
Rose Ann Hardy, Ex-Officio

Absent: Joan Bengtson
Rita Palazzo
John Birmingham, Alternate
Michael Hess, Alternate

FILED IN EAST LYME
CONNECTICUT
Oct 23 2015 AT 10:15 AM/PM
EAST LYME TOWN CLERK

Special Guests: Cathy Wilson, Director of the Senior Center
Jeff Newton, Superintendent of Schools
Tim Hagen, Board of Education Chair

Mr. Schuch called this Regular Meeting of the Planning Commission to order at 7:06 pm.

I. Pledge of Allegiance

The Pledge was observed.

II. Guest Speakers A. Cathy Wilson

Mr. Schuch explained that the POCD is revisited every ten years; it was revised prior to the recession and we are currently at the half way mark. Given these circumstances, the Commission would like to familiarize themselves with the two age spectrums in town in order to plan for the future.

Ms. Wilson imparted the following:

- According to the Connecticut COA, Connecticut has the third largest life expectancy in the Nation
- Connecticut is the seventh oldest State
- Between 2010 and 2040 the 65+ population is expected to grow by 57%
- In terms of population projections for the Town, it isn't expected to grow, what is changing is who lives here- the age of the Town population is advancing.

In terms of the East Lyme Senior Center, the Town is seeing the following:

- An increase in foot traffic and request for services
- 28% increase in program attendance
- 14% increase in individuals coming to the Center

- Revenue has grown by almost 50%
- The number of riders on the Senior Center bus has only increased from 249 to 279; this can be attributed to the lack of walkable communities and because driving tends to be the last act people want to let go of.

Ms. Wilson detailed the various 55+ and over communities in Town such as Chapman Farms, Chapman Woods, Spinnaker, Clark's Hollow, HEPA, and Twin Haven and so on.

Ms. Wilson said she would like to see more activity space, currently they are programmed to the max between Parks and Rec, Youth Services, the Registrar of Voters, the Library and Senior Center.

Currently the Transportation that the Center offers is booked all day so this will become an issue as the senior population grows. Transportation is provided for groceries, appointments within Town and trips to and from the Center. Travel out of Town occurs once a week due to the absence of a department store.

The Commission discussed the benefit of Pool wellness and how several seniors find the temperature too cold. Dr. Hagen noted that he utilizes the pool on an almost daily basis and that it is frequently packed with seniors.

Ms. Wilson, Dr. Hagen and Mr. Newton discussed establishing communication between the Pool Commission and the Senior Center.

Ms. Wilson clarified that the addition of cars for Senior Center transportation will be more useful in terms of length of time, more direct routes and expense.

B. Jeff Newton

Mr. Newton's presentation focused on past, current and over school enrollment and elementary school design planning (see attached.)

Mr. Newton detailed the decline of enrollment over the years and gave a general overview of the history and current plan for the elementary school project.

Ms. Schwartz asked if it is less expensive to build a new school and renovate one school as opposed to the previously discussed options. Mr. Newton said it would be less money and completed more quickly.

Mr. Schuch asked if there was a town being used as a role model.

Mr. Newton said that all districts in Connecticut are dealing with declining enrollment and that in terms of the physical building, Waterford.

The Commission discussed the geothermal attributes of the Waterford school and Mr. Newton noted that they plan to do the same, with a different interior due to programming differences.

The Commission discussed the Kiva education approach.

Mr. Schuch told of an article that he and Mr. Goeschel found of an article that states that \$18,000 is spent per student each year. He asked if this is accurate and a helpful metric.

Dr. Hagen said that the figure is \$15,000 plus and that it can be misleading.

Mr. Newton said it is a tool that will always be used and he discussed fiscal responsibility.

Mr. Covino said that the Town has to attract people and education is an incentive to move here.

Ms. Thurlow asked if they look at what companies are hiring- like Electric Boat when planning the elementary schools.

Mr. Newton said that it is hard to justify what exactly will happen but they try to take everything into consideration.

The Commission discussed the impact of the Boardwalk and asked the guests their thoughts on the topic.

Ms. Wilson said that it is a quality of life improvement and enticement that seniors themselves will utilize themselves; she doesn't see the need to affiliate it with the Senior Center.

Mr. Schuch said that we need to consider how the conversation this evening can be incorporated into the POCD.

Mr. Goeschel said the POCD is due to be updated in 2020 which is also when the schools may be ready if the proposal moves forward; he discussed a possible synergy between youth and the elderly.

The Commission thanked the guest speakers for attending and for their presentations. Both Ms. Wilson and Mr. Newton offered to come back again in the future.

The Commission took a five minute comfort break.

III. Public Delegations

Public Delegations is the time when members of the public are invited to speak to the Commission about certain matters. Issues or concerns related to approved subdivisions under construction (Item VI) and in-house proposals or general topics of discussion (Item VII) are open to comment. Items, referrals, or applications subject to a decision by the Commission, a public hearing, or in litigation may not be discussed. The members of the Commission will not directly answer questions or make comment during delegations.

There were none.

IV. Approval of Minutes

A. September 29th, 2015 Special Meeting Minutes

- ****Motion (1)**

Ms. Thurlow moved to approve the September 29th, 2015 Special Meeting Minutes.

Ms. Schwartz seconded the motion.

Vote: 4-0-0. Motion passed.

V. Subdivisions and Resubdivisions

A. Nottingham Hills Subdivision

Mr. Goeschel gave a brief update of the subdivision status.

The upper portion of Upper Kensington will be paved in the next few weeks along with the planting of trees.

VI. Zoning Referrals (CGS 8-3a)

Proposed changes in zoning regulations or boundaries shall be referred to the Planning Commission for a report that shall contain the findings of the planning commission on consistency of a proposed regulation or boundary changes with the Plan of Development and any other recommendations the Planning Commission deems relevant. Failure of the Planning Commission to report prior to or at the hearing shall be taken as approval of such proposals. The report of the Planning Commission regarding such proposal shall include the reasons for the commission's vote and shall be incorporated into the records of any public hearing held thereon by the Zoning Commission. A proposal disapproved by the Planning Commission may be adopted by the Zoning Commission by a vote of not less than two-thirds of all the members of the Zoning Commission.

There were none.

VII. Municipal Referrals (8-24)

- A. Cellco Partnership dba Verizon Wireless; for an installation of one "micro" cell phone antenna 7.5-feet on top of an existing 70-foot light pole at the edge of Bridebrook Park adjacent to the Niantic Fire Department Station 2.**

Mr. Goeschel called attention to the Plans and related information in the Member's Packet (attached.)

Mr. Goeschel noted how similar this Application is to the previous Niantic Fire Department cell phone antenna application we saw and ruled on several weeks ago.

- ****Motion (2)**

Mr. Covino moved that Cellco Partnership dba Verizon Wireless; for an installation of one "micro" cell phone antenna 7.5-feet on top of an existing 70-foot light pole at the edge of Bridebrook Park adjacent to the Niantic Fire Department Station 2 is consistent with the POCD and creates no obstacle or adversarial position to that document.

Ms. Schwartz seconded the motion.

Vote: 4-0-0.

VIII. Old Business

A. Plan of Conservation and Development (POCD)

This will be tabled until the next Planning Commission meeting.

B. Status of Subdivisions and Bonds

This will be tabled until the next Planning Commission meeting.

C. East Lyme Subdivision Regulation Proposed Changes- Section 9- Assurances for Completion and Maintenance of Improvements

This will be tabled until the next meeting.

VII. New Business

A. Planning Commission goes paperless

This will be tabled until the next meeting.

B. Wilson and Newton at October 20th, 2015 Meeting

Ms. Wilson and Mr. Newton gave their presentations at the beginning of the meeting.

VIII. Reports

A. Chairman

Mr. Schuch had nothing to report.

B. Ex-Officio- Rose Ann Hardy

Ms. Hardy had nothing to report.

C. Zoning Representative

No report. Ms. Hardy suggested having someone substitute for the November 5th, 2015 Zoning Meeting since Mr. Balantic has resigned from the Commission.

D. Sub-Committees

- a. Sustainable Development and Climate Adaptation Subcommittee (F. Schwartz, Staff: G. Goeschel)

Mr. Goeschel and Ms. Schwartz had nothing to report.

E. Staff/Communications

Mr. Goeschel said that he has been busy with Nottingham Hills, Grant work and Wetland work. He has also been working with intern Joel regarding demographic projections for trends in Town.

Ms. Thurlow inquired about the side walk project. The Commission discussed problem areas that would benefit from sidewalks.

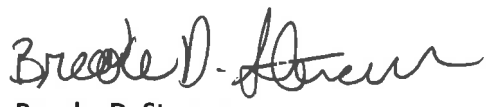
• **Motion (3)

Mr. Covino moved to adjourn this Planning Commission meeting at 8:47 pm.

Ms. Thurlow seconded the motion.

Vote: 4-0-0. Motion passed.

Respectfully Submitted,

A handwritten signature in black ink, appearing to read "Brooke D. Stevens". The signature is fluid and cursive, with the first name "Brooke" being more prominent.

Brooke D. Stevens
Recording Secretary



East Lyme Public Schools

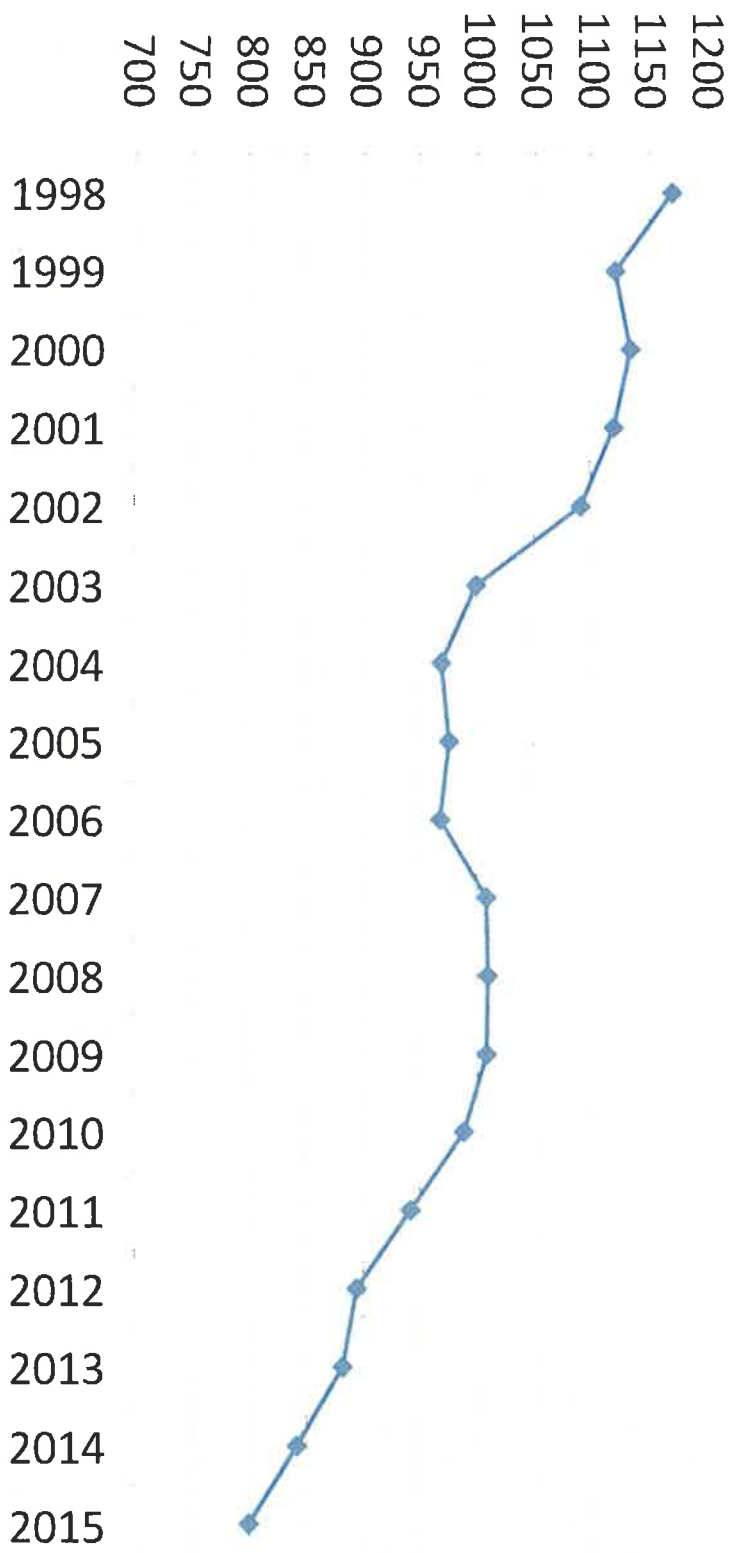
Projected School/District Enrollment, Elementary School Design Planning

Presentation to the East Lyme Planning Commission
October 20, 2015
EL BOE Chair Tim Hagen and
Superintendent Jeffrey R. Newton

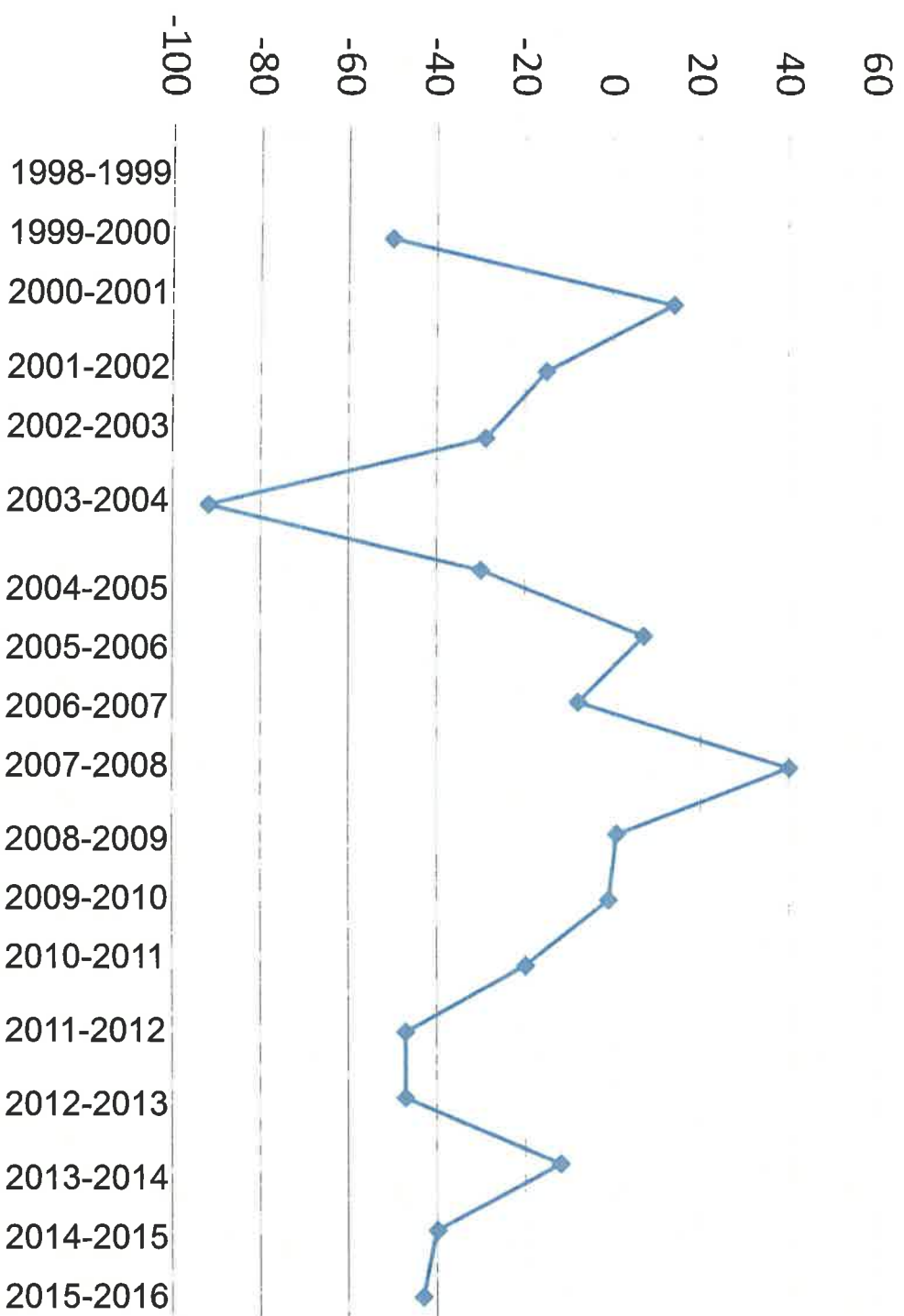
East Lyme K-4 Enrollment, 1998 to 2015

School Year	<u>K-4</u> Student Enrollment	Enrollment - Previous Year Enrollment
1998-1999	1171	
1999-2000	1121	-50
2000-2001	1135	14
2001-2002	1120	-15
2002-2003	1091	-29
2003-2004	999	-92
2004-2005	969	-30
2005-2006	976	7
2006-2007	968	-8
2007-2008	1008	40
2008-2009	1009	1
2009-2010	1008	-1
2010-2011	988	-20
2011-2012	941	-47
2012-2013	894	-47
2013-2014	882	-12
2014-2015	842	-40
2015-2016	799	-43

East Lyme K-4 Enrollment, 1998 to 2015



East Lyme K-4 Enrollment, 1998 to 2015



East Lyme K-4 Enrollment 1998 to 2015 and Projected through 2015

School Year	<u>K-4</u> Student Enrollment	Enrollment - Previous Year Enrollment
1998-1999	1171	
1999-2000	1121	-50
2000-2001	1135	14
2001-2002	1120	-15
2002-2003	1091	-29
2003-2004	999	-92
2004-2005	969	-30
2005-2006	976	7
2006-2007	968	-8
2007-2008	1008	40
2008-2009	1009	1
2009-2010	1008	-1
2010-2011	988	-20
2011-2012	941	-47
2012-2013	894	-47
2013-2014	882	-12
2014-2015	842	-40
2015-2016	799	-43

School Year	Projected <u>K-4</u> Student Enrollment	Previous Yr
2016-2017	769	-30
2017-2018	754	-15
2018-2019	745	-9
2019-2020	755	10
2020-2021	754	-1
2021-2022	774	20
2022-2023	781	7
2023-2024	766	-15
2024-2025	766	0

East Lyme K-12 Enrollment 1998 to 2015 and Projected through 2025

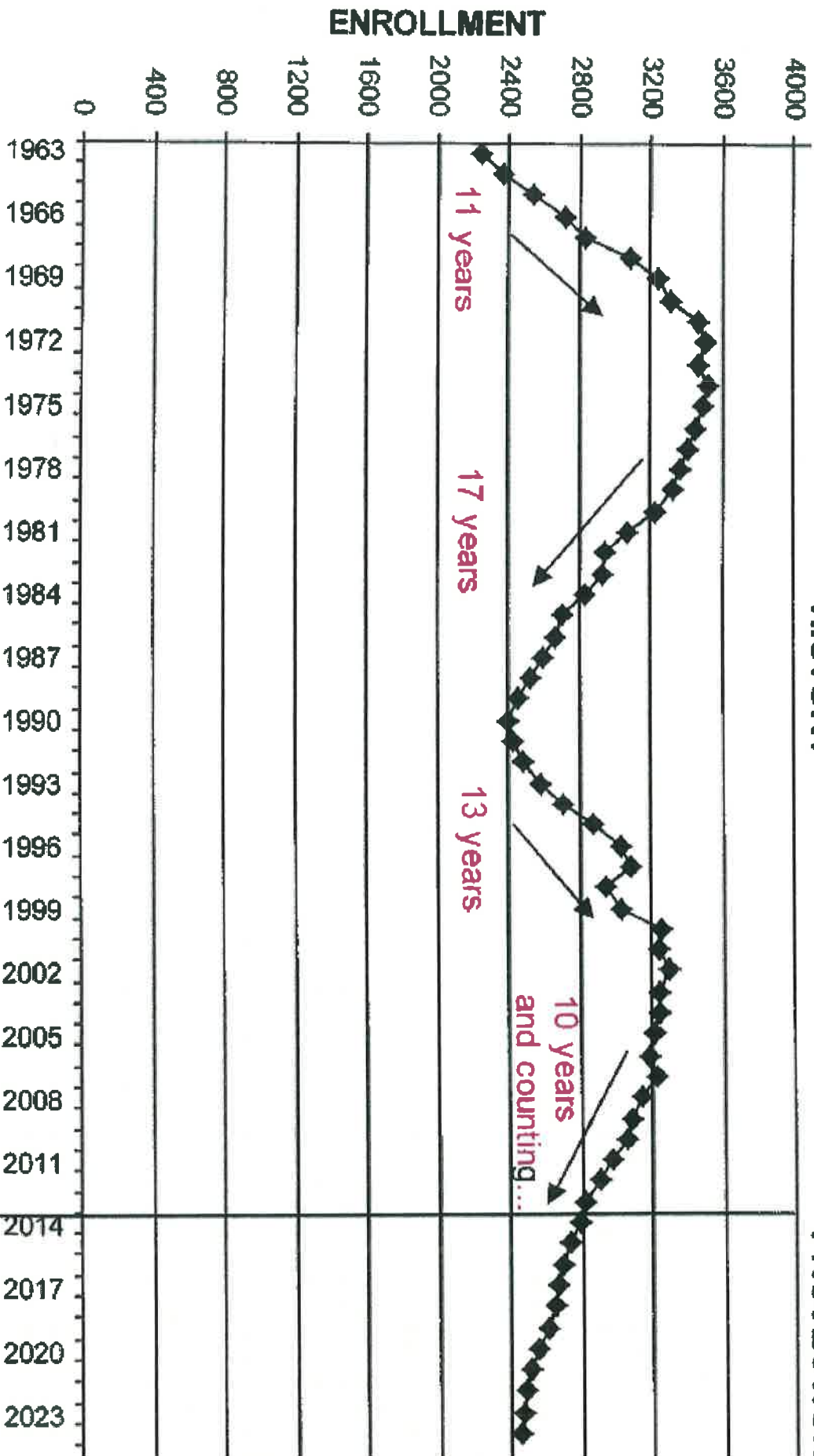
School Year	<u>K-12</u> Student Enrollment	Enrollment - Previous Year Enrollment
1998-1999	3117	
1999-2000	3125	8
2000-2001	3244	119
2001-2002	3243	-1
2002-2003	3290	47
2003-2004	3237	-53
2004-2005	3233	-4
2005-2006	3211	-22
2006-2007	3186	-25
2007-2008	3228	42
2008-2009	3133	-95
2009-2010	3087	-46
2010-2011	3059	-28
2011-2012	2964	-95
2012-2013	2894	-70
2013-2014	2814	-80
2014-2015	2790	-24
2015-2016	2727	-63

School Year	Projected <u>K-12</u> Student Enrollment	Previous Yr
2016-2017	2691	-36
2017-2018	2659	-32
2018-2019	2600	-59
2019-2020	2553	-47
2020-2021	2489	-64
2021-2022	2432	-57
2022-2023	2394	-38
2023-2024	2352	-42
2024-2025	2325	-27

"THE LONG VIEW": 50+ YEARS OF K-12 EAST LYME ENROLLMENTS SINCE 1963...

HISTORY

PROJECTION



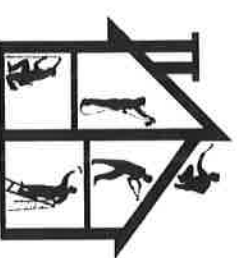
MOST YEARS INCLUDE SALEM AND MAGNET STUDENTS

A 2011 Feasibility Study by Kaestle Boos, Associates, Inc. identified significant infrastructure and maintenance requirements.

Cost to repair all three buildings, with no improvement to layout or appearance and limited to no financial assistance from the state: **\$22 million**

Problems include:

- Degraded boilers and ventilation systems
- Poor insulation and inefficient windows and doors
- Asbestos in some storage and attic areas
- No air-conditioning during many school days
- Inadequate layout for collaborative learning and teaching
- Expensive to maintain
- Need to point, repair or replace exterior brickwork
- Unsafe drop off and pick up areas (combined bus and parent drop off)
- 2013 NESDEC study indicates that elementary population can be served in two-thirds current space well into the foreseeable future



Elementary School Project Timeline

BOE hired Kaestle Boos to conduct a feasibility study	2010
Feasibility study conclusion – (\$22 million in elementary bldg needs)	2011
ELPS Facilities Vision Task Force formed by BOE (options)	Fall 2011
ELPS Facilities Vision Task Force Findings Report to BOE	Apr 2013
In order of preference -	
1) Renovate as new FL and HA w/NC offline;	
2) Discontinue use of all 3 elem schools and build new at HA or FL site;	
3) Renovate all 3 elem as new.	
BOE authorized Supt to seek proposals from design firms to assist BOE w/determining best course of action to address elementary facility needs	Jul 15, 2013
Prepare RFQ, review by 3 BOE members to determine qualified firms for RFP (process 4-6 months)	Sep 9, 2013
BOE voted to hire design firm (Jacunski Humes Architects, LLC)	Mar 10, 2014
Design Steering Committee charge/appointment by BOE	May 13, 2014
Design Steering Committee recommended taking option of one elementary school off the table	Jun 2014

Elementary School Project Timeline (Continued)

NESDEC results of demographic study presented to BOE	Sep 8, 2014
Design Steering Committee recommendation vote held	Nov 12, 2014
Design Steering Committee recommendation to BOE	Nov 17, 2014
(BOE took action to renovate as new NCS and build new FL School)	
BOE authorized Design Comm to move fwd w/planning for project (Renovate as new NCS and build new FL School)	Dec 15, 2014
Former Supt and town official tour of HA facility	Mar 2015
NCS Traffic Study Presentation to BOE	Jun 23, 2015
Modify educational specifications	Ongoing
Supt presentation to Niantic Rotary Club	Sep 16, 2015
Final cost estimates expected	Mid Oct 2015
Complete Design/Ed Spec	Dec 2015
BOE presentation to Board of Selectmen	Winter 2016
BOE presentation to Board of Finance	Winter 2016

Elementary School Project Timeline (Continued)

Referendum to Town	Mar 2016
File to St of CT for reimbursement (ED-049)	Jun 2016*
Secure construction manager services	Jul 2016
Complete construction plans and specifications	May 2017
Reimbursement Approval	Jun 2017
Redistrict elementary students for 2017-2018 SY	Jun 2017
Vacate NCS (Students temporarily relocated to HA)	Jul 2017
Begin construction at NCS and FL	Jul 2017
Complete construction	TBD
Occupy new facilities	TBD
Release Lillie B. Haynes to Town	TBD

*If not ready to file by Jun 2016, timetable slips by at least one year with additional costs.

Definitions and State Reimbursement Rates

Renovate as New - An existing building is totally refurbished and results in the renovated facility taking on a useful life comparable to that of a new facility. Example: Completely gutting a closed high school and converting it to a middle school. The state will reimburse 43.21% for eligible sq. ft.*

New Construction - A completely new building is built.

The state will reimburse 43.21% for eligible sq. ft.* if building new is proven to be more cost effective than renovate as new.

Discontinue Use of One Building and Renovate as New and/or Build as New Two Remaining Facilities

Pros

- Allows for good educational design and flexibility due to extensive interior renovation and modifications to meet instructional needs
- Upgrades all major systems and provides modern security and safety procedures for 20 years
- Qualifies for state reimbursement of 43.21% on eligible square footage
- **Saves over \$750,000 in annual general fund expenditures for staff and maintenance**
- **Creates two schools with less than 400 students each**
- **Releases one site back to the Town for alternative use or sale**

Cons

- **Significant cultural change**



East Lyme Elementary Schools Design Committee Activities



Committee Meetings

May 21, 2014	September 18, 2014	January 28, 2015
June 4, 2014	October 2, 2014	February 12, 2015
June 17 2014	October 21, 2014	March 26, 2015
August 21, 2014	October 28, 2014	May 27, 2015
September 4, 2014	November 12, 2014	June 15, 2015
		September 9, 2015

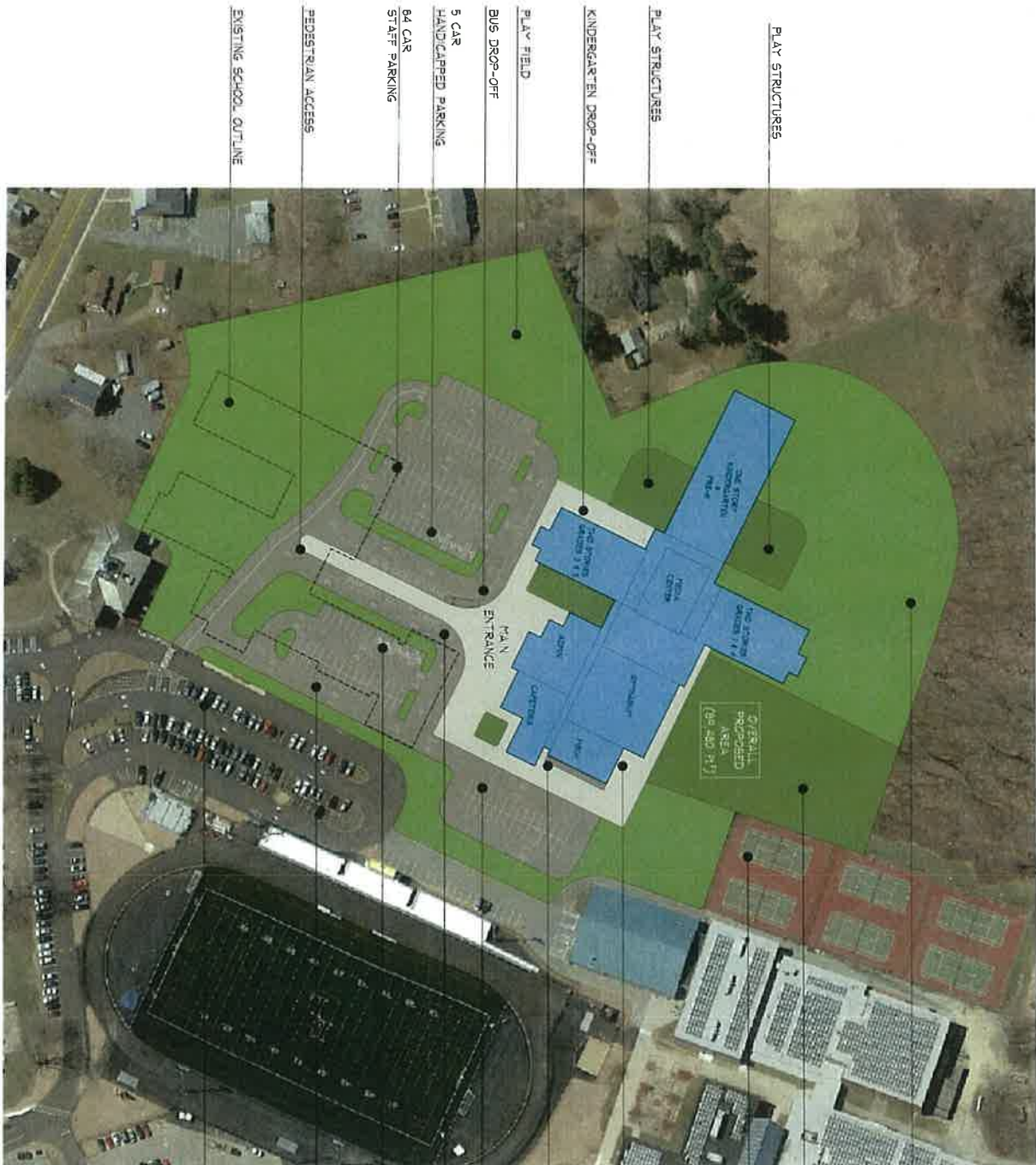
Committee Updates to Board of Education

May 27, 2014	September 22, 2014	January 26, 2015	May 26, 2015
June 9, 2014	October 14, 2014	February 5, 2015	July 13, 2015
July 14, 2014	October 27, 2014	March 23, 2015	August 10, 2015
August 25, 2014	December 15, 2014	April 6, 2015	September 14, 2015

Committee Recommendation to the Board of Education

November 17, 2014

Published Agendas, Minutes and Results are posted to the district website



PLAY STRUCTURES

PLAY STRUCTURES

KINDERGARTEN DROP-OFF

PLAY FIELD

BUS DROP-OFF

5 CAR HANDICAPPED PARKING

B4 CAR STAFF PARKING

PEDESTRIAN ACCESS

EXISTING SCHOOL OUTLINE

MULTI-USE BUFFER

PLAYING FIELDS

EXISTING TENNIS COURTS

GYMNASIUM ENTRANCE

SERVICE ACCESS

30 CAR VISITOR/EVENT PARKING

PARENT DROP-OFF

5 CAR HANDICAPPED PARKING

40 CAR VISITOR PARKING

EXISTING PARKING AREA

PARKING TOTALS

PROPOSED PARKING TOTAL: 154 SPACES
-LAND CAPPED PARKING: 10 SPACES (6.6%)
-STAFF PARKING: 70 SPACES
-VISITOR PARKING: 70 SPACES

FLANDERS ELEMENTARY SCHOOL

167 BOSTON POST ROAD

EAST LIME, CONNECTICUT

JOHN J. LACINAK
ARCHITECTS, LLC
11 NOVEMBER 2017
167 BOSTON POST ROAD
EAST LIME, CT 06026

FLANDERS
SCHOOL
NEW K-4
SITE PLAN
LAYOUT 3

FL-1
15



1 NANTIC CENTER SCHOOL PROPOSED CONDITIONS
SCALE 1/8" = 1' TO SCALE



PARKING TOTALS

- EXISTING PARKING TOTAL: 72 SPACES
- HANDICAPPED PARKING: 3 SPACES (4%)
- STANDARD PARKING: 69 SPACES
- PROPOSED PARKING TOTAL: 36 SPACES
- HANDICAPPED PARKING: 3 SPACES (3%)
- STAFF PARKING: 20 SPACES
- VISITOR PARKING: 13 SPACES

NANTIC CENTER SCHOOL

7 WEST MAIN STREET

NANTIC, CONNECTICUT

NANTIC CENTER SCHOOL SITE PLAN LAYOUT (OPTION 1)

Gary Goeschel

From: Baldwin, Kenneth [KBALDWIN@RC.com]
Sent: Wednesday, October 14, 2015 11:38 AM
To: Gary Goeschel; Edward B. O'Connell
Cc: James Smith; Paradis, Ray Luke (Ray.Paradis@VerizonWireless.com)
Subject: Verizon Wireless Proposed Small Cell Wireless Facility at

Gary and Ed

Jim Smith asked me to respond to your request for some additional information regarding Verizon's need for the proposed wireless facility at Peretz Park in Niantic. For your reference, Verizon identified this site as it's Niantic Small Cell (SC) 6 facility.

Generally speaking, the Niantic SC 6 facility will allow Verizon to provide enhanced wireless service to a fairly discrete area, anywhere from ¼ to ½ mile radius from the facility location. More specifically, the facility will:

- 1) help improve coverage (quality of signal) along a portion of Route 156; and
- 2) provide significant network capacity relief to Verizon's two adjacent cell sites (East Lyme cell site at 93 Roxbury Road and Rocky Neck cell site at 49 Brainerd Road).

If you have any other questions please feel free to contact me.

Ken

Kenneth C. Baldwin

Robinson & Cole LLP
280 Trumbull Street
Hartford, CT 06103
Direct 860.275.8345 | Fax 860.275.8299
kbaldwin@rc.com | www.rc.com
[Bio](#) | [Contact Card](#)

Robinson+Cole

Boston | Hartford | New York | Providence | Stamford
Albany | Los Angeles | Miami | New London

This transmittal may be a confidential attorney-client communication or may otherwise be privileged or confidential. If it is not clear that you are the intended recipient, you are hereby notified that you have received this transmittal in error; any review, dissemination, distribution, or copying of this transmittal is strictly prohibited. If you suspect that you have received this communication in error, please notify us immediately by telephone at 1-860-275-8200, or e-mail at it-admin@rc.com, and immediately delete this message and all its attachments.

Jennifer Lindo

From: Gary Goeschel
Sent: Tuesday, October 13, 2015 12:49 PM
To: Jennifer Lindo
Subject: FW: VERIZON BRIDEBROOK TOWER MAP
Attachments: VERIZON BRIDEBROOK TOWER MAP (00147748xD3DC6).pdf

Gary A. Goeschel II
Director of Planning / Inland Wetlands Agent
Town of East Lyme
PO Box 519 | 108 Pennsylvania Avenue | Niantic, Connecticut 06357
Office 860-691-4105 | Fax 860-691-0351
ggoeschel@eltownhall.com

From: Edward B. O'Connell [<mailto:eboconnell@WallerSmithPalmer.com>]
Sent: Saturday, October 10, 2015 11:13 AM
To: Gary Goeschel; 'taylorq83@gmail.com'
Cc: 'ctyaylor@eltownhall.com'; 'James Smith'
Subject: FW: VERIZON BRIDEBROOK TOWER MAP

Gary, attached are copies of the plans submitted by Verizon for a "micro" cellphone tower (7.5 feet on top of an existing 70 footlight pole at the edge of Bridebrook Park where it abuts the Niantic Fire Department substation). Please let me know if the Planning Commission needs anything more for an 8-24 report. Thanks, Ed.



Edward B. O'Connell, Attorney at Law
eboconnell@wallersmithpalmer.com

Waller, Smith & Palmer, P.C.
Office: 860-442-0367 | Fax: 860-447-9915
52 Eugene O'Neill Dr. New London, CT 06320
<http://wallersmithpalmer.com>

Any federal tax advice contained in this communication, including any attachments, is not intended or written to be used, and cannot be used by any taxpayer, for the purpose of avoiding any tax penalties that may be imposed under the Internal Revenue Code. The information contained in this communication may be confidential, may be an attorney-client communication and as such, legally privileged, and is in all events intended only for the use of the addressee named above. If you are not the intended recipient (or an agent responsible for delivering this communication to the intended recipient), you are hereby notified that any use, review, dissemination, distribution, or copying of this communication, or any of its contents, is strictly prohibited. Nothing in this communication is intended to constitute a waiver of any privilege or the confidentiality of this message. If you have received this communication in error, please notify the sender immediately by return e-mail or telephone and delete the original message and any copy of it from your computer system. Thank you.

From: Colleen M. Clang
Sent: Thursday, October 08, 2015 3:34 PM
To: Edward B. O'Connell
Subject: VERIZON BRIDEBROOK TOWER MAP

Colleen M. Clang | Paralegal
cclang@wallersmithpalmer.com



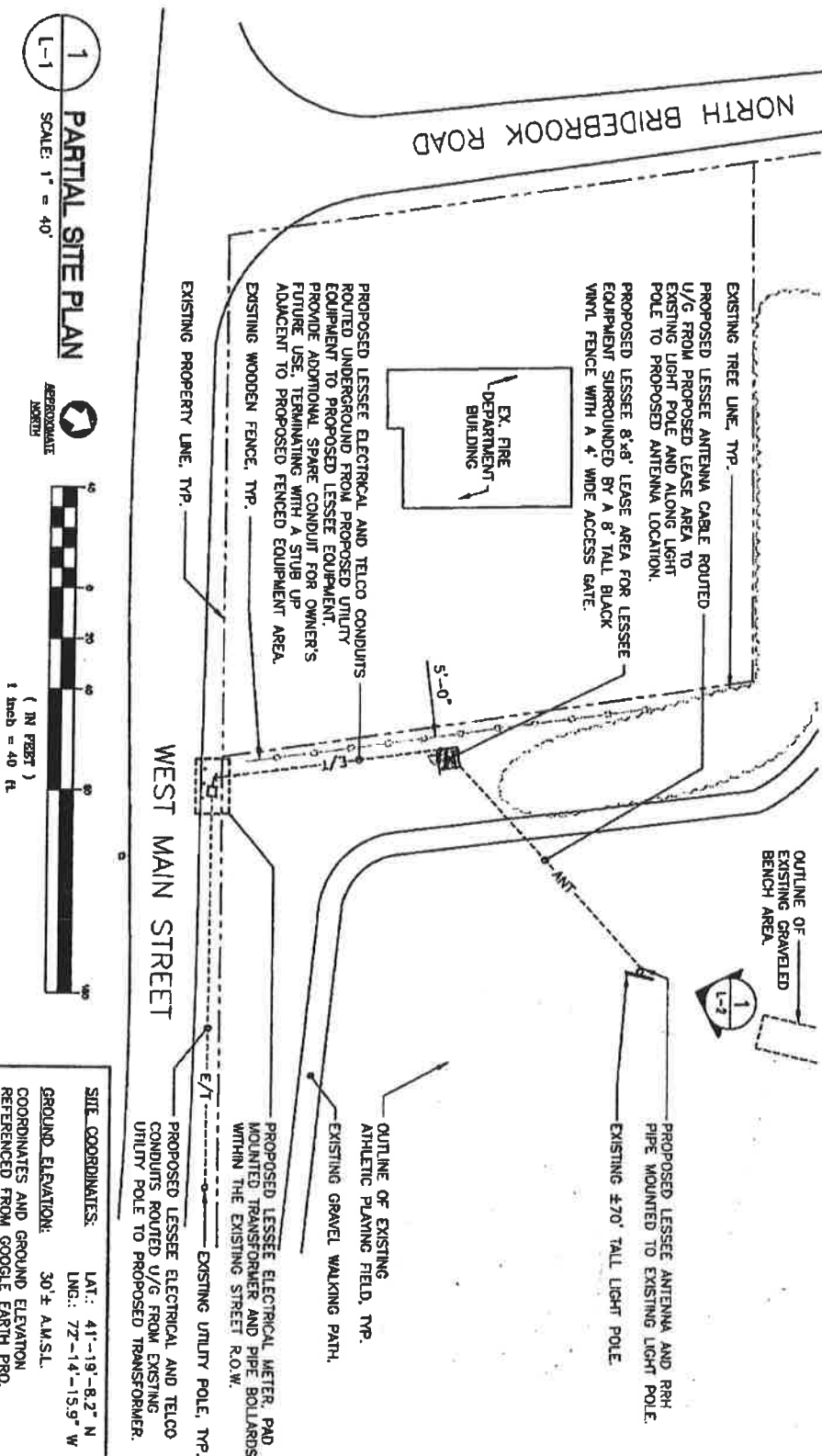
Waller, Smith & Palmer, P.C.
Office: [860-442-0367](tel:860-442-0367) | Fax: [860-447-9915](tel:860-447-9915)
52 Eugene O'Neill Dr New London, CT 06320
<http://wallersmithpalmer.com>

Any federal tax advice contained in this communication, including any attachments, is not intended or written to be used, and cannot be used by any taxpayer, for the purpose of avoiding any tax penalties that may be imposed under the Internal Revenue Code. The information contained in this communication may be confidential, may be an attorney-client communication and as such, legally privileged, and is in all events intended only for the use of the addressee named above. If you are not the intended recipient (or an agent responsible for delivering this communication to the intended recipient), you are hereby notified that any use, review, dissemination, distribution, or copying of this communication, or any of its contents, is strictly prohibited. Nothing in this communication is intended to constitute a waiver of any privilege or the confidentiality of this message. If you have received this communication in error, please notify the sender immediately by return e-mail or telephone and delete the original message and any copy of it from your computer system. Thank you.

- LEASE EXHIBIT**

LEASE EXHIBIT

THIS LEASE PLAN IS DIAGRAMMATIC IN NATURE AND IS INTENDED TO PROVIDE GENERAL INFORMATION REGARDING THE LOCATION AND SIZE OF THE PROPOSED WIRELESS COMMUNICATION FACILITY. THE SITE LAYOUT WILL BE FINALIZED UPON COMPLETION OF SITE SURVEY AND FACILITY DESIGN.


$$\frac{1}{L-1}$$

PARTIAL SITE PLAN
SCALE: 1" = 40'



(IN FEET)
1 inch = 40 ft

SITE COORDINATES: LAT: 41°-19'-8.2" N
LNG: 72°-14'-15.9" W

Cellco Partnership d/b/a Verizon Wireless

NIANTIC SC6

221 WEST MAIN STREET
EAST LYME, CT 06357

CEN TEK engineering

Centered on Solutions™

(203) 486-0200
 (203) 486-0207 Fax
 60-9 North Branford Road, Branford, CT 06405

Executive Summary

[illegible]

LEASE EXHIBIT

THIS LEASE PLAN IS DIAGRAMATIC IN NATURE AND IS INTENDED TO PROVIDE GENERAL INFORMATION REGARDING THE LOCATION AND SIZE OF THE PROPOSED WIRELESS COMMUNICATION FACILITY. THE SITE LAYOUT WILL BE FINALIZED UPON COMPLETION OF SITE SURVEY AND FACILITY DESIGN.

1
L-2

LIGHT POLE ELEVATION

SCALE: 1" = 10'



PROPOSED LESSEE ANTENNA PIPE
MOUNTED TO EXISTING LIGHT POLE.
EL. ±77'-5" A.G.L.
Q. OF PROPOSED LESSEE ANTENNA
EL. ±76'-2" A.G.L.
TOP OF EXISTING LIGHT POLE
EL. ±70'-0" A.G.L.
EXISTING ATHLETIC FIELD LIGHTS.
MIN. 5' 0" ±7'-5"

L-2

Celco Partnership d/b/a Verizon Wireless

NIANTIC SC6

221 WEST MAIN STREET
EAST LYME, CT 06357

CEN TEK engineering

Centered on Solutions™

www.cen-tek.com

203 439-0350
203 439-0357 Fax
204 North Broad Street, Portland, CT 06460

DATE	12/11/12	BY	W. J. JONES	REVISION	1
DATE	12/11/12	BY	W. J. JONES	REVISION	2
DATE	12/11/12	BY	W. J. JONES	REVISION	3
DATE	12/11/12	BY	W. J. JONES	REVISION	4
DATE	12/11/12	BY	W. J. JONES	REVISION	5
DATE	12/11/12	BY	W. J. JONES	REVISION	6
DATE	12/11/12	BY	W. J. JONES	REVISION	7
DATE	12/11/12	BY	W. J. JONES	REVISION	8
DATE	12/11/12	BY	W. J. JONES	REVISION	9
DATE	12/11/12	BY	W. J. JONES	REVISION	10