

Hole-in-the-Wall Parking Lot
Outdoor Stormwater Classroom
Slideshow
East Lyme, Connecticut



Hole-in-the-Wall Beach
Support Building

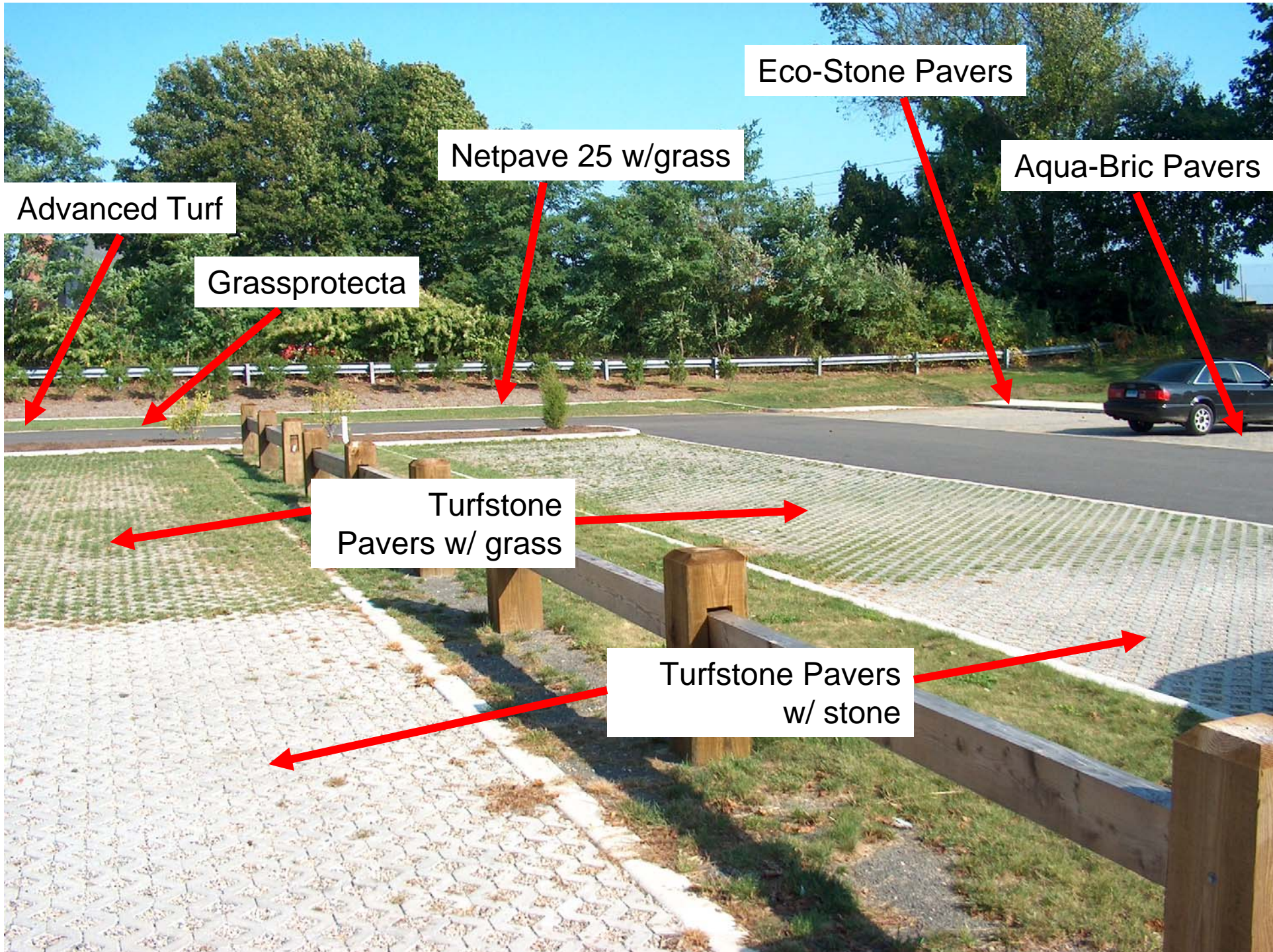


Several different pervious parking surfaces





Fexi-Pave



Eco-Stone Pavers

Netpave 25 w/grass

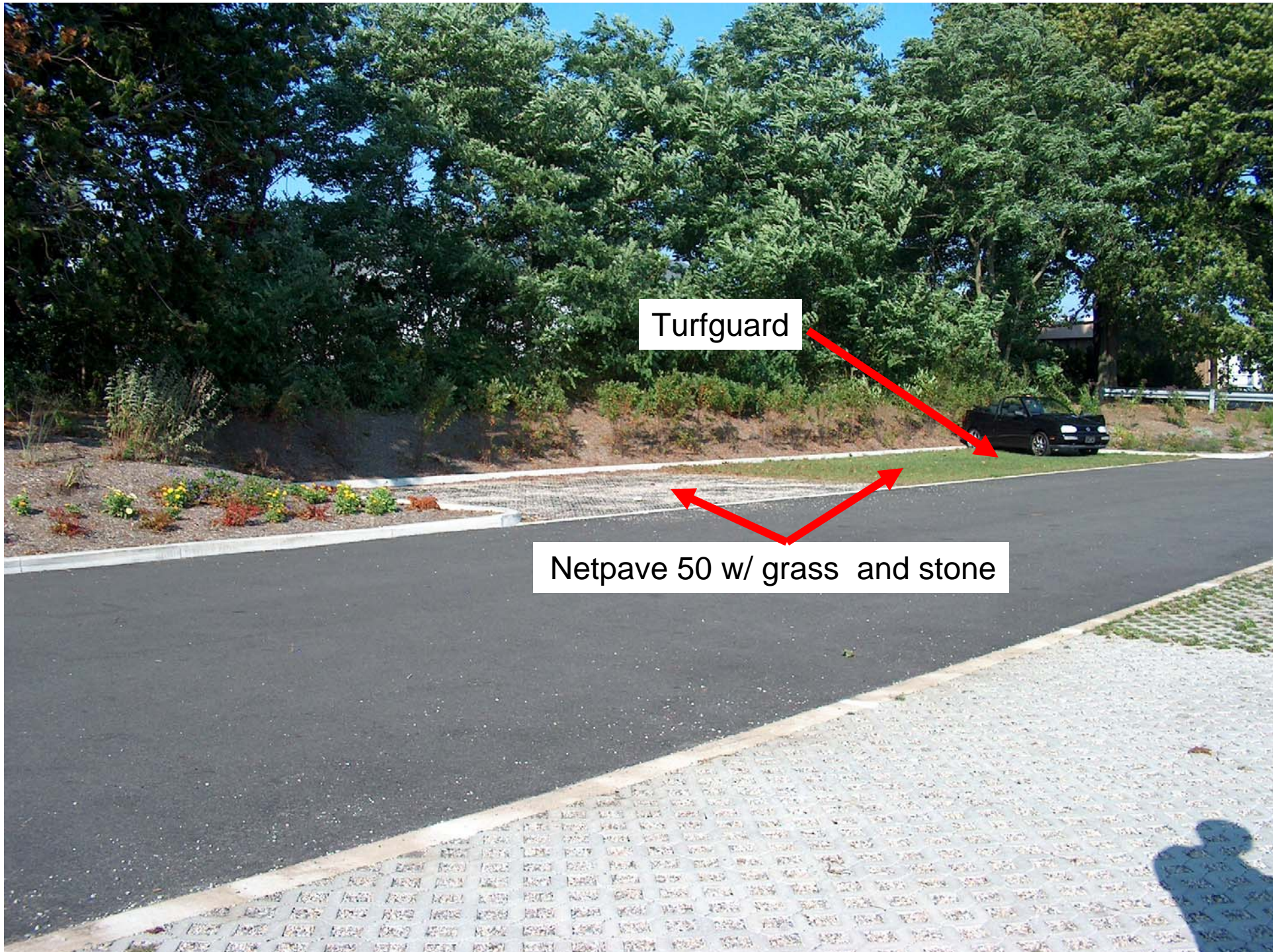
Aqua-Bric Pavers

Advanced Turf

Grassprotecta

Turfstone Pavers w/ grass

Turfstone Pavers w/ stone

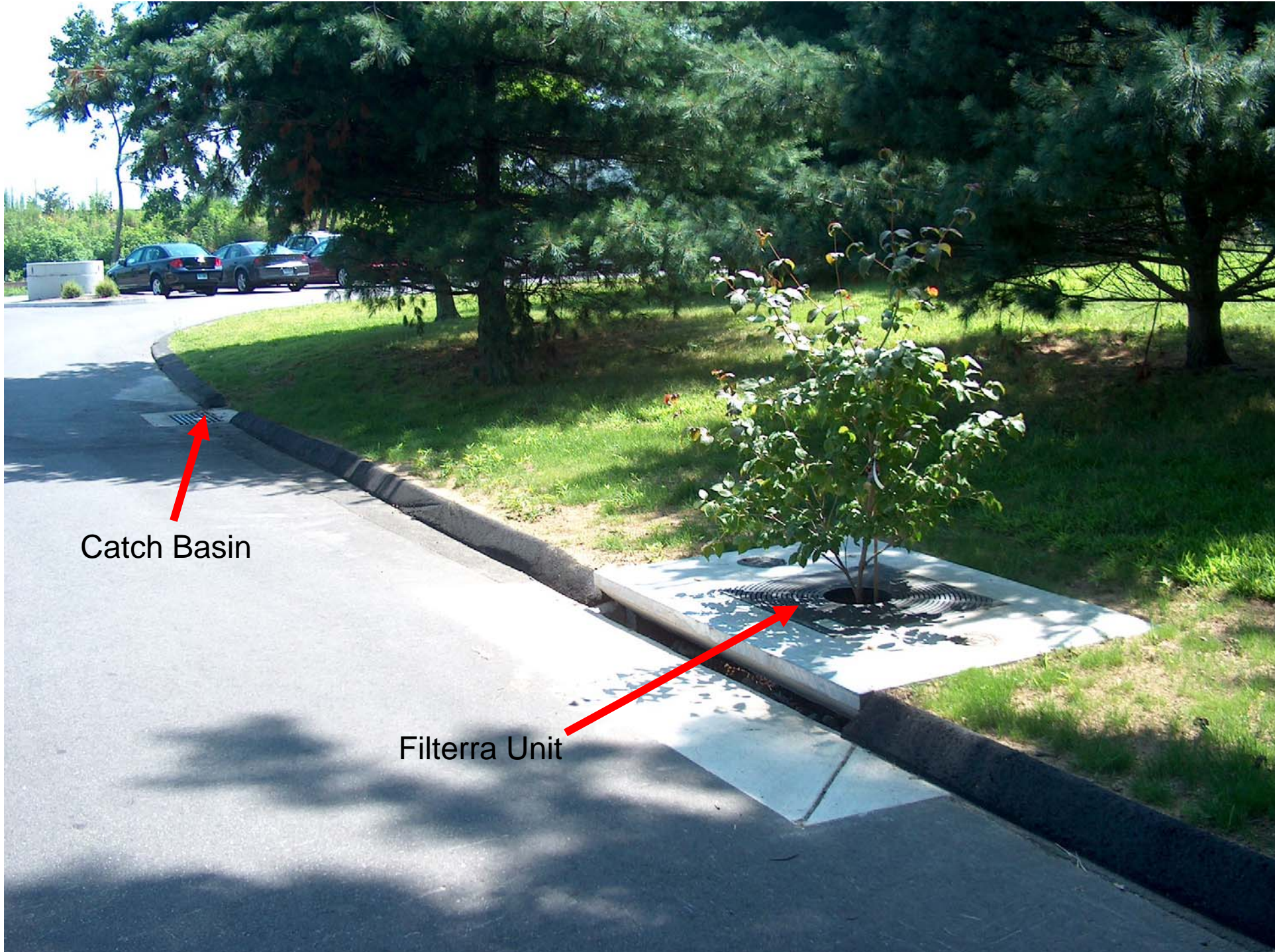


Turfguard

Netpave 50 w/ grass and stone



UCONN Turfgrass Test Site



Catch Basin

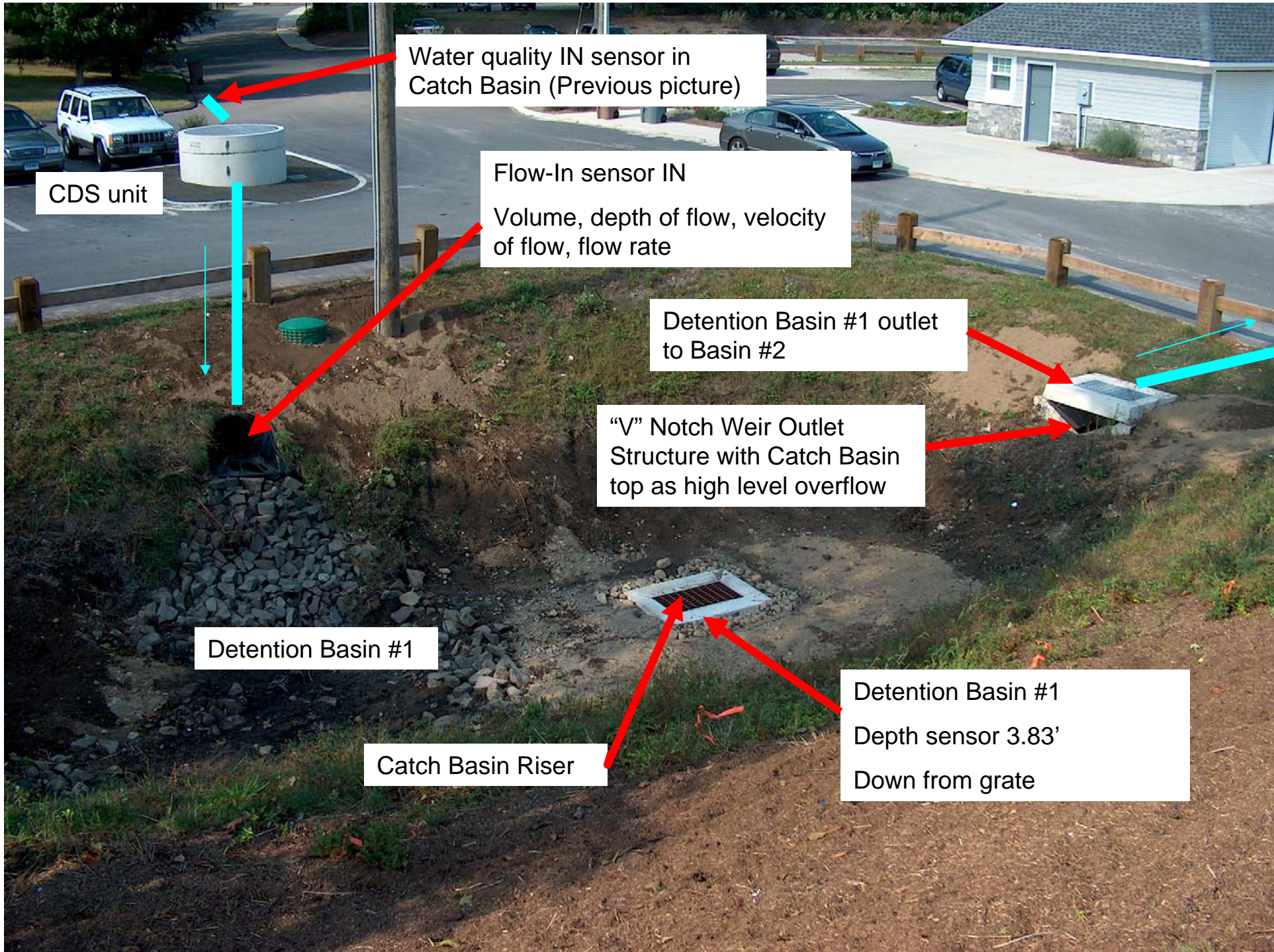
Filterra Unit



Stormwater IN Catch basin

1. Turbidity
2. Salinity
3. Conductivity
4. Total Dissolved Solids (TDS)
5. Water Temp

Stormwater Monitoring System (Econet)



Water quality IN sensor in Catch Basin (Previous picture)

CDS unit

Flow-In sensor IN
Volume, depth of flow, velocity of flow, flow rate

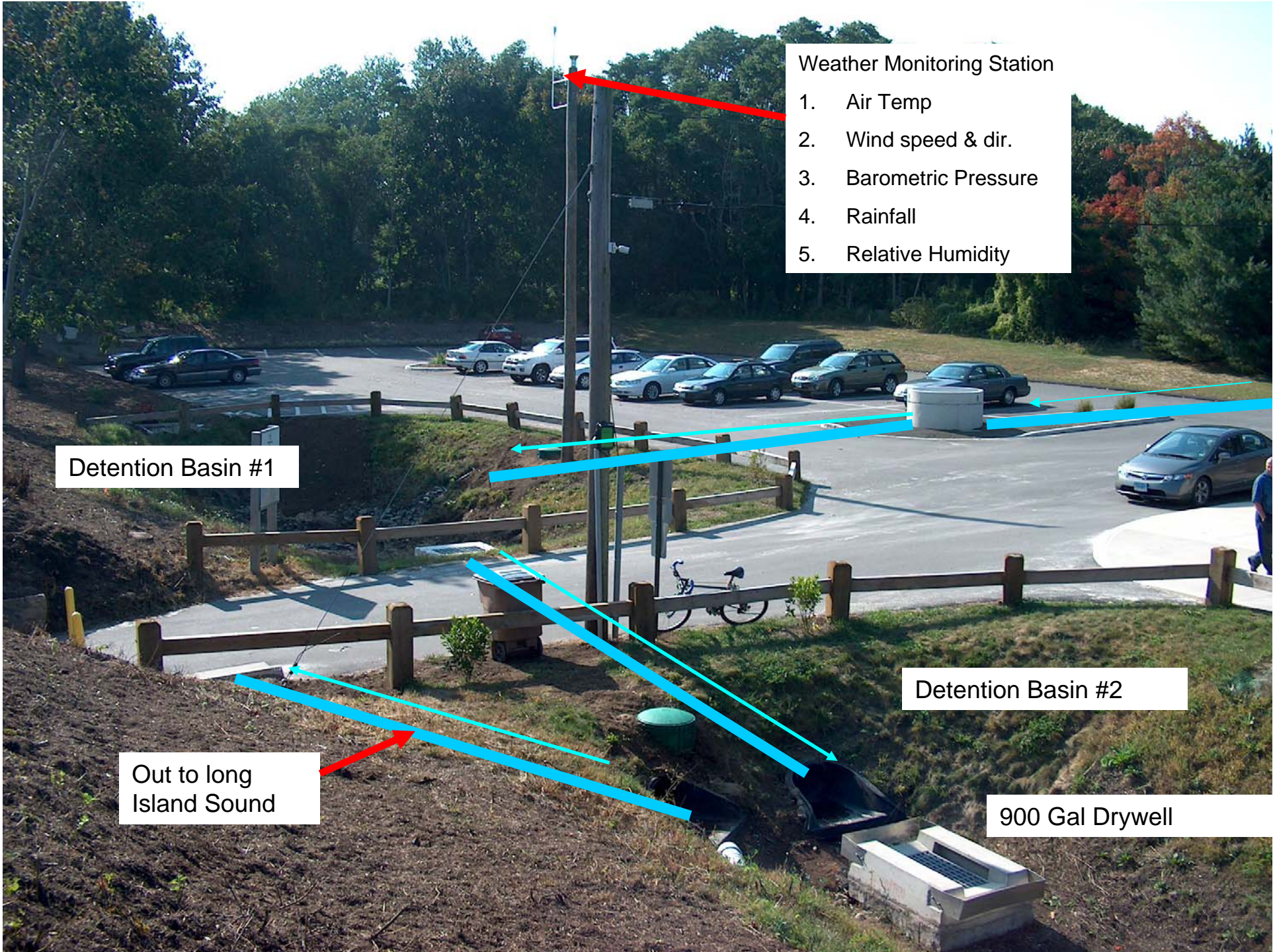
Detention Basin #1 outlet to Basin #2

"V" Notch Weir Outlet Structure with Catch Basin top as high level overflow

Detention Basin #1

Catch Basin Riser

Detention Basin #1
Depth sensor 3.83'
Down from grate



Weather Monitoring Station

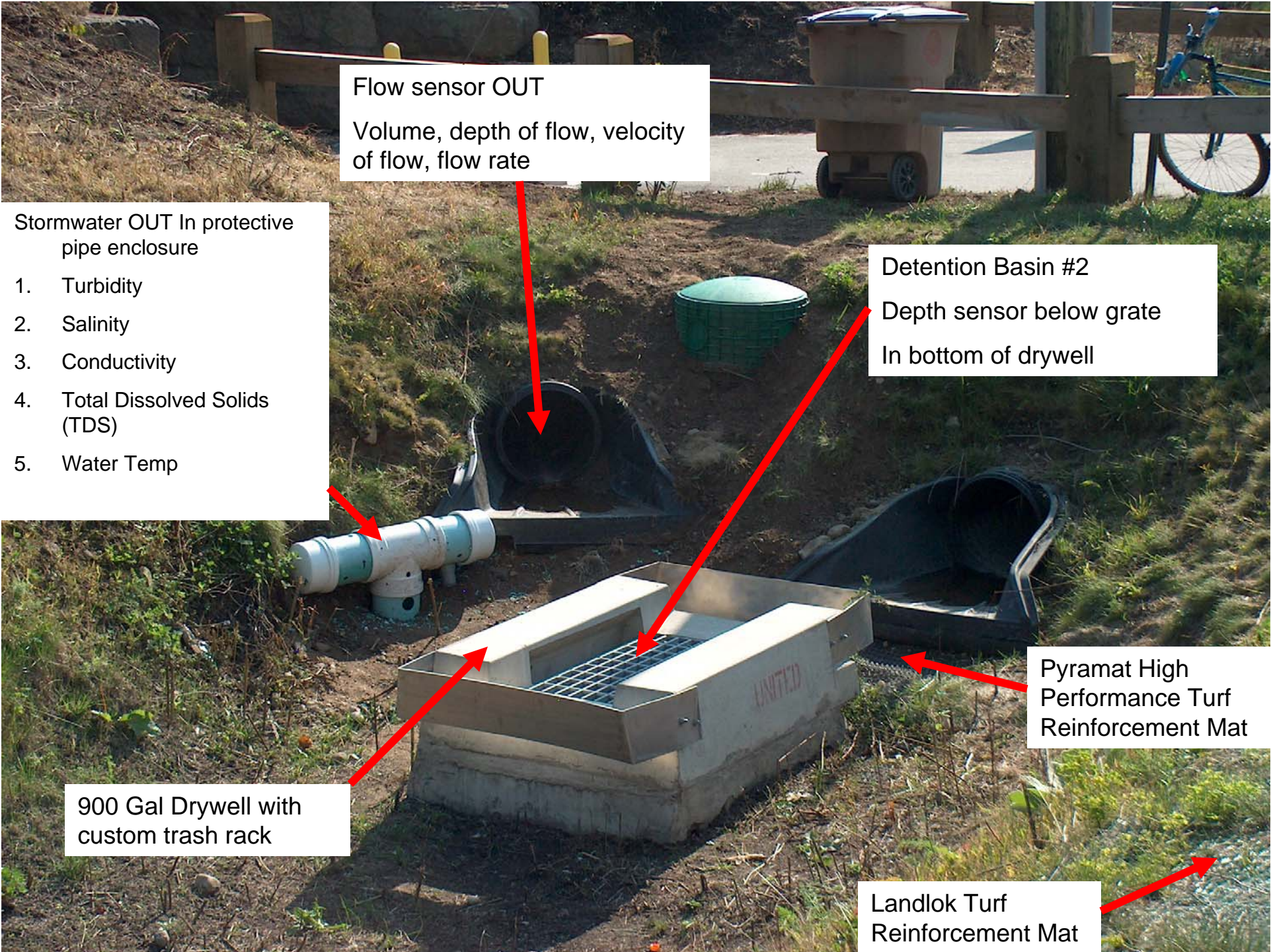
- 1. Air Temp
- 2. Wind speed & dir.
- 3. Barometric Pressure
- 4. Rainfall
- 5. Relative Humidity

Detention Basin #1

Detention Basin #2

Out to long
Island Sound

900 Gal Drywell



Flow sensor OUT
Volume, depth of flow, velocity
of flow, flow rate

Stormwater OUT In protective
pipe enclosure

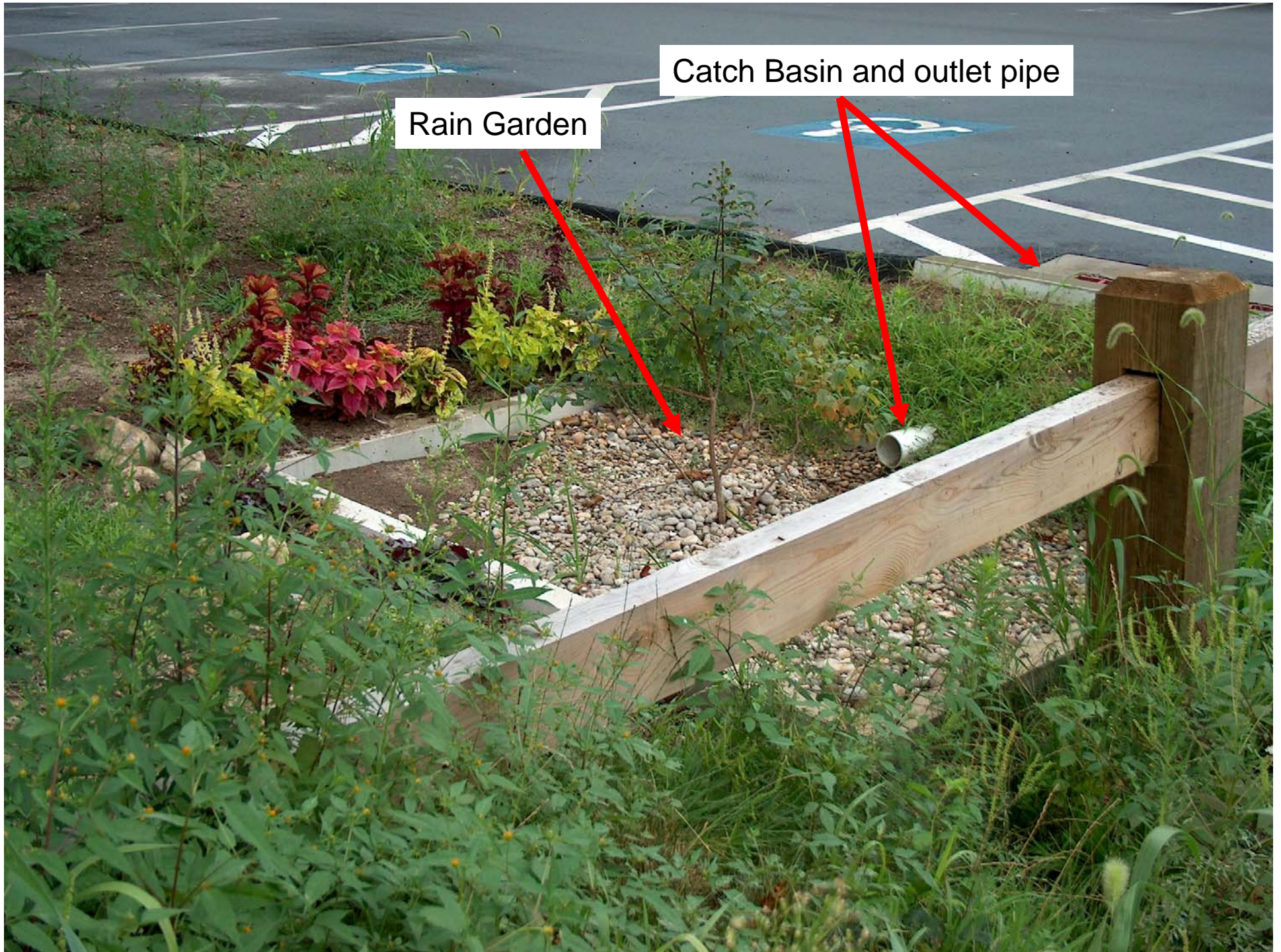
- 1. Turbidity
- 2. Salinity
- 3. Conductivity
- 4. Total Dissolved Solids (TDS)
- 5. Water Temp

Detention Basin #2
Depth sensor below grate
In bottom of drywell

900 Gal Drywell with
custom trash rack

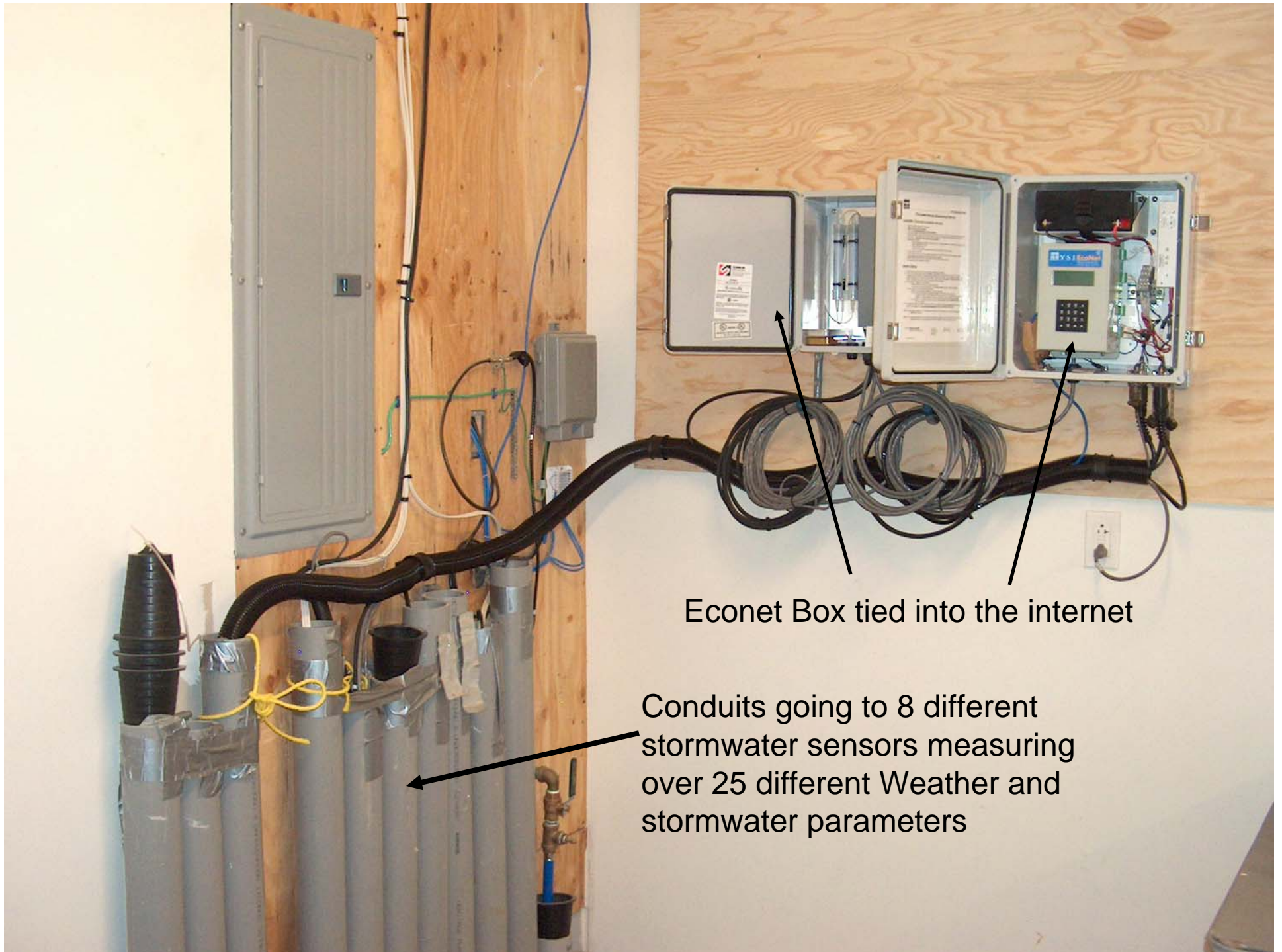
Pyramat High
Performance Turf
Reinforcement Mat

Landlok Turf
Reinforcement Mat



Rain Garden

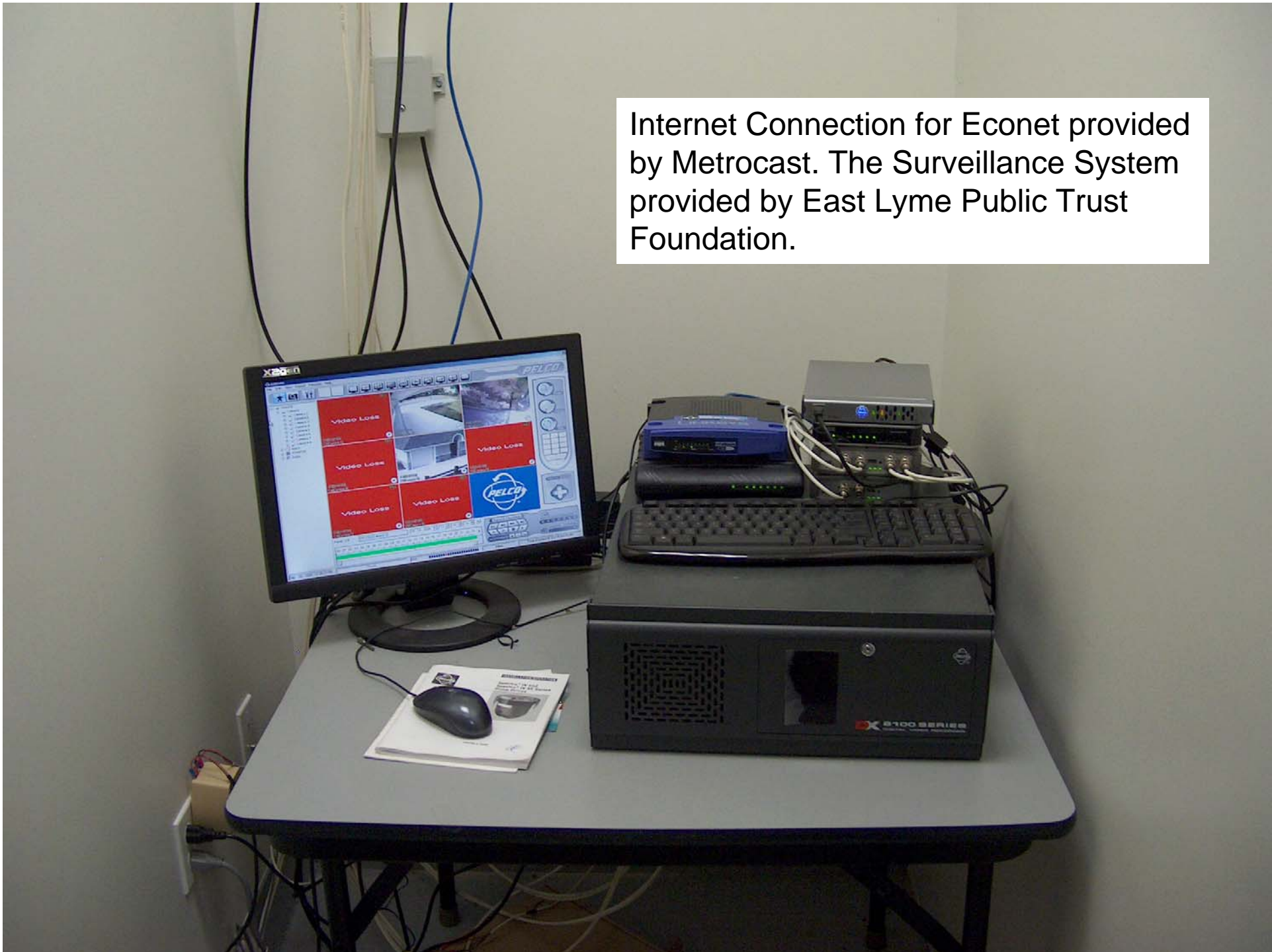
Catch Basin and outlet pipe



Econet Box tied into the internet

Conduits going to 8 different stormwater sensors measuring over 25 different Weather and stormwater parameters

Internet Connection for Econet provided by Metrocast. The Surveillance System provided by East Lyme Public Trust Foundation.



A view looking south over the detention basins, CDS unit and Weather station through the “Hole in the Wall” to Long Island Sound (improving the quality of stormwater).

